

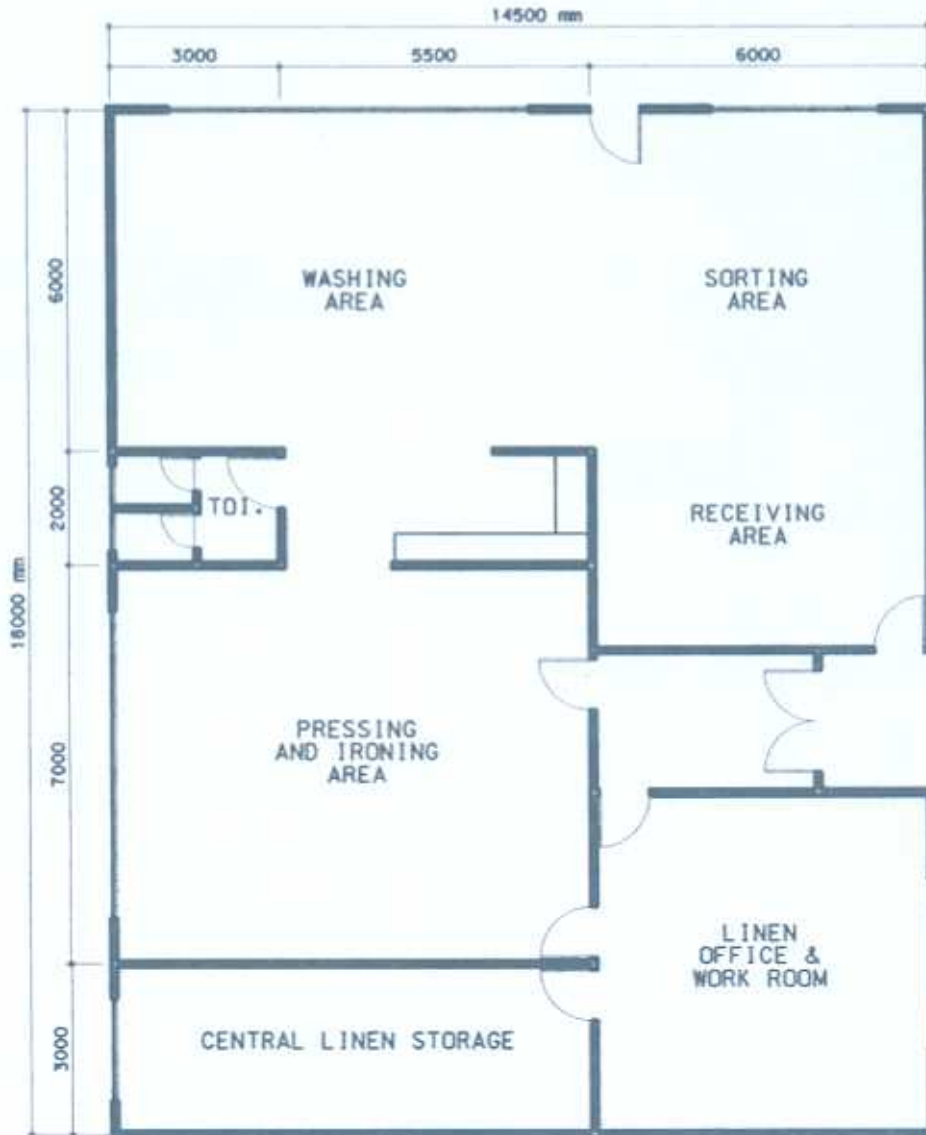
**VOLUME 4      SCHEMATIC PLANS AND TECHNICAL  
REQUIREMENTS OF A 100-BED HOSPITAL**

**4.6    ENGINEERING, MAINTENANCE  
AND HOUSEKEEPING Service Facility**

Hospital:	DEPARTMENT DATA SHEET	Department of Health
Tertiary, 100-Bed		HEALTH INFRASTRUCTURE SERVICE
Updated Reference: May 1992	Department: LINEN AND LAUNDRY	Reference Sheet Number 100B-EN-DDS01

LAYOUT PER DEPARTMENT SHOWING ROOMS AND SPACE COMPONENTS:

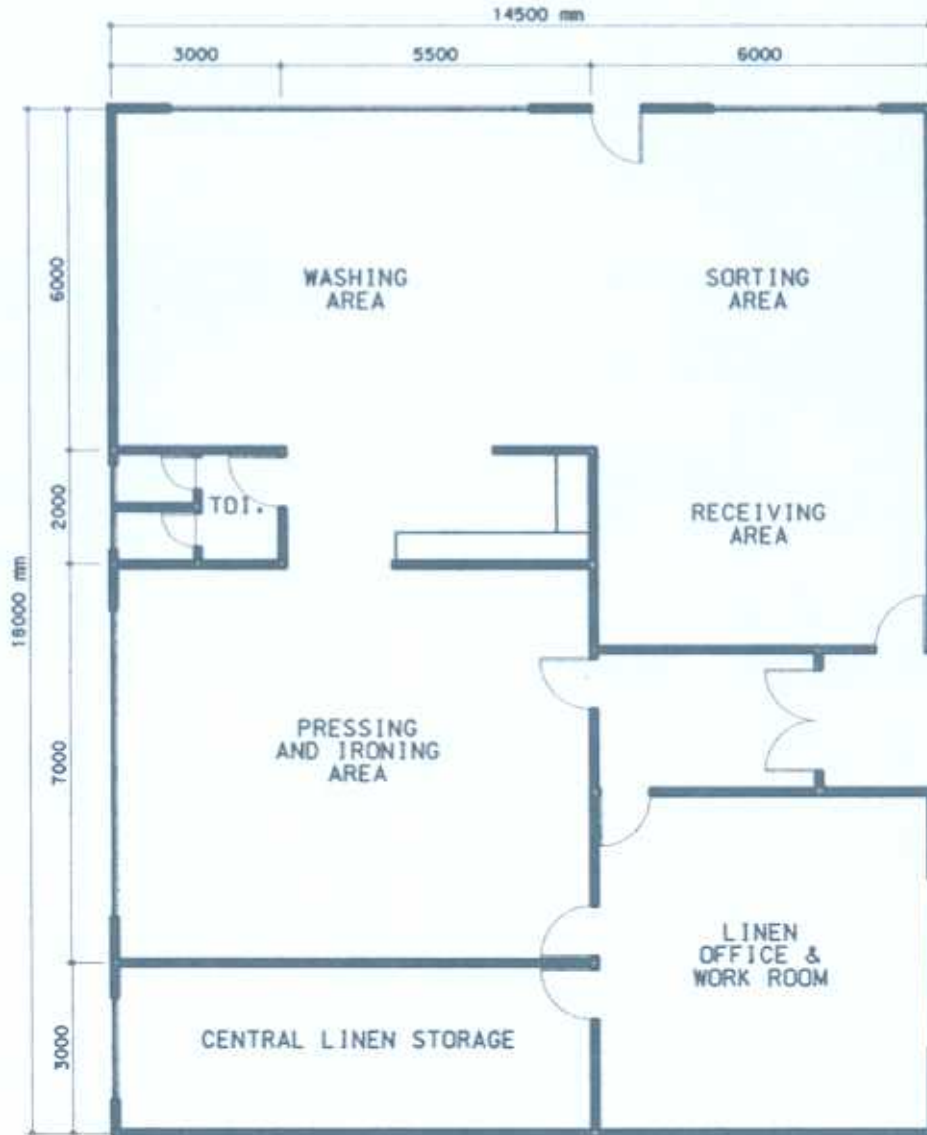
Scale 1:150 mts.



Hospital: Tertiary, 100-Bed	DEPARTMENT DATA SHEET	Department of Health HEALTH INFRASTRUCTURE SERVICE
Updated Reference: May 1992	Department: LINEN AND LAUNDRY	Reference Sheet Number 100B-EN-DDS01

LAYOUT PER DEPARTMENT SHOWING ROOMS AND SPACE COMPONENTS:

Scale 1:150 mts.



Hospital:  Tertiary, 100-Bed	ROOM DATA SHEET		Department of Health  HEALTH INFRASTRUCTURE SERVICE	
Updated Reference: May 1992	Department: LINEN AND LAUNDRY	Room Title: LINEN OFFICE AND WORK ROOM	Reference Sheet Number: 100B-EN-RDS01A	
FUNCTIONAL DESIGN REQUIREMENTS:				
<p>This activity space provides facilities needed for the following activities</p> <ol style="list-style-type: none"> <li>Laundry worker classify, count and record clean linen in the log book.</li> <li>Linen room incharge repair or mend torn linen and record in the log book.</li> <li>Head of unit receive linen issue slip and prepare linen items for issuance.</li> <li>Laundry worker pack linen and deliver to wards.</li> <li>Head of linen unit prepare forms for purchase of materials</li> <li>Linen unit receive materials and do the sewing of linen and other necessary preparations</li> <li>Head of unit prepare memo receipt and notify the requisitioning unit when materials are ready</li> <li>Head of linen unit retrieve and store original copies of forms in file</li> <li>Marking and remarking of linen.</li> </ol> <p>People Involved</p> <p>1 x Laundry Unit Head 2 x Laundry Worker 2 x Seamstress</p> <p>Planning Relationships:</p> <ol style="list-style-type: none"> <li>Close to Receiving and Sorting Area.</li> <li>Close to Pressing and Ironing Area.</li> <li>Adjacent to Central Linen Storage.</li> </ol>	EQUIPMENT AND ACCESSORY CHECKLIST	QUANTITY	REMARKS	
	Sewing machine Marking Machine Trolley or pushcart Waste paper receptacle	1 1 1 1		
	FURNITURE AND FIXTURE CHECKLIST	QUANTITY	REMARKS	
	Chair, upright, stacking Counter, 900mm high, with cabinets below Shelving, with bins Counter, 900mm high, with shelving below Desk, 750 x 1200 Table, 600 x 750 Steel filing cabinet, 500x700 Working table, 900 2100.	3    1 1 1 1		
	ADDITIONAL EQUIPMENT AND ENGINEERING TERMINALS	QUANTITY	REMARKS	
	Rail, curtain, window Outlet intercom Outlet, 10A, 2P, 240V, duplex  Smoke detector Floor outlet 10A, 2P, 240V, duplex	1 1 3  1	  grounding type, parallel slots  grounding type, parallel slots	

Hospital	ROOM DATA SHEET		Department of Health HEALTH INFRASTRUCTURE SERVICE
Tertiary, 100-Bed	Department: LINEN AND LAUNDRY	Room Title LINEN OFFICE AND WORK ROOM	Reference Sheet Number 100B-EN-RDS01B
Updated Reference: November 1991			
TECHNICAL DESIGN DATA:			
ENVIRONMENTAL CONDITIONS	DESIGN DATA	ENVIRONMENTAL CONDITIONS	DESIGN DATA
AIR		LIGHTING AND VISUAL	
Outdoor air temperature (deg. C)	ave. local station temp. reading	General illumination (LUX)	500
Room Temperature	atmospheric	Night illumination (LUX)	NA
Mechanical ventilation		Task illumination (LUX)	1000
Volume (cu. m./hr. -person)	NA	Colour rendering	ESSENTIAL desirable unnecessary
Velocity (m./hr.)	NA	Standby light	essential DESIRABLE unnecessary
Pressure:		Emergency light	essential DESIRABLE unnecessary
Exhaust (psi)	NA	Daylight	essential DESIRABLE unnecessary
Inlet (psi)	NA	View out	essential desirable UNNECESSARY
% Dust filtration	NA	Privacy	essential desirable UNNECESSARY
Humidity (%RH)	NA	Black out	essential desirable UNNECESSARY
Cooling load (TR)	NA		
SOUND		SAFETY	
Acceptable sound level (db)	60	Accessible hot surface:	NA
Speech privacy	essential desirable UNNECESSARY	Maximum temperature (deg. C)	NA
Quality which cannot be tolerated	tonal impact	Domestic hot water:	NA
		Maximum temperature (deg. C)	NA
		Access limit	linen and laundry staff
		Fire risk	LOW medium high
		Other risks	NA



Hospital:	ROOM DATA SHEET		Department of Health		
Tertiary, 100-Bed			HEALTH INFRASTRUCTURE SERVICE		
Updated Reference: May 1992	Department: LINEN AND LAUNDRY	Room Title: LINEN OFFICE AND WORK ROOM	Reference Sheet Number: 100B-EN-RDS01C		
TECHNICAL DESIGN DATA:		LAYOUT OF ROOM AND SPACE COMPONENTS:			
DIRECT SERVICES	DESIGN DATA	Scale 1:150 mts			
Disposal	hospital solid waste type A				
Hot water	NA				
Cold water	NA				
Drainage	NA				
Gas	NA				
Compressed air	NA				
Steam	NA				
Others					
DIRECT DEMANDS ON FLOOR AND WALL				<b>Key</b> 1 Chair, upright, stacking 2 Counter, 900mm high, with cabinets below 3 Counter, 900mm high, with shelving below 4 Working table, 900 x 2100 5 Shelving with bins 6 Sewing machine 7 Marking machine 8 Waste paper receptacle 9 Desk, 750 x 1200 10 Table, 600 x 750 11 Steel filing cabinet, 500x700 12 Pass through window 13 Double section door with lower section serving as counter 14 Trolley or pushcart	
Loading	light MEDIUM heavy				
Spillage	NA				
Foot traffic	light MEDIUM heavy				
Wheel traffic	NA				
Impacts	NA				
Abrasion	NA				
Easy maintenance	essential DESIRABLE unnecessary				
Vibration free	essential DESIRABLE unnecessary				
Door sets	ordinary access door				
Windows	clear, solar control	SPACE DEMANDS (Total Minimum Space Required in sq.m.): 36.00			
Internal glazing	clear	Space Components	Minimum Space Required/Component		
		REGULATIONS AND NOTES:			

Hospital:  Tertiary, 100-Bed	ROOM DATA SHEET		Department of Health  HEALTH INFRASTRUCTURE SERVICE
Updated Reference: May 1992	Department: LINEN AND LAUNDRY	Room Title: CENTRAL LINEN STORAGE	Reference Sheet Number: 100B-EN-RDS02A
FUNCTIONAL DESIGN REQUIREMENTS:			
<p>This activity space provides facilities needed for the following activities:</p> <ul style="list-style-type: none"> <li>a. Storage of unused linen</li> </ul> <p>People Involved:</p> <ul style="list-style-type: none"> <li>1 x Laundry Worker</li> </ul> <p>Planning Relationships:</p> <ul style="list-style-type: none"> <li>a. Adjacent to Linen Office and Work Room.</li> <li>b. Close to Pressing and Ironing Area.</li> </ul>	EQUIPMENT AND ACCESSORY CHECKLIST	QUANTITY	REMARKS
	FURNITURE AND FIXTURE CHECKLIST	QUANTITY	REMARKS
	ADDITIONAL EQUIPMENT AND ENGINEERING TERMINALS	QUANTITY	REMARKS
	Outlet, 10A, 2P, 240V	2	grounding type, parallel slots
Smoke detector	1		

Hospital Tertiary, 100-Bed	<b>ROOM DATA SHEET</b>		Department of Health HEALTH INFRASTRUCTURE SERVICE
Updated Reference: November 1991	Department: LINEN AND LAUNDRY	Room Title: CENTRAL LINEN STORAGE	Reference Sheet Number: 100B-EN-RDS02B
TECHNICAL DESIGN DATA			
ENVIRONMENTAL CONDITIONS	DESIGN DATA	ENVIRONMENTAL CONDITIONS	DESIGN DATA
AIR		LIGHTING AND VISUAL	
Outdoor air temperature (deg. C)	ave. local station temp. reading	General illumination (LUX)	150
Room Temperature	atmospheric	Night illumination (LUX)	NA
Mechanical ventilation		Task illumination (LUX)	1000
Volume (cu. m./hr./person)	NA	Colour rendering	essential DESIRABLE unnecessary
Velocity (m/hr.)	NA	Standby light	essential desirable UNNECESSARY
Pressure		Emergency light	essential desirable UNNECESSARY
Exhaust (psi)	NA	Daylight	essential DESIRABLE unnecessary
Inlet (psi)	NA	View out	essential desirable UNNECESSARY
% Dust filtration	NA	Privacy	essential desirable UNNECESSARY
Humidity (%RH)	NA	Black out	essential desirable UNNECESSARY
Cooling load (TR)	NA		
SOUND		SAFETY	
Acceptable sound level (db)	60	Accessible hot surface	NA
Speech privacy	essential desirable UNNECESSARY	Maximum temperature (deg. C)	NA
Quality which cannot be tolerated	NA	Domestic hot water	NA
		Maximum temperature (deg. C)	NA
		Access limit	linen and laundry staff
		Fire risk	LOW medium high
		Other risks	NA



Hospital:  Tertiary, 100-Bed	ROOM DATA SHEET		Department of Health  HEALTH INFRASTRUCTURE SERVICE		
Updated Reference: November 1991	Department: LINEN AND LAUNDRY	Room Title: CENTRAL LINEN STORAGE	Reference Sheet Number: 100B-EN-RDS02C		
TECHNICAL DESIGN DATA:		LAYOUT OF ROOM AND SPACE COMPONENTS:			
DIRECT SERVICES	DESIGN DATA	Scale 1:150 mts.			
Disposal	hospital solid waste type - A				
Hot water	NA				
Cold water	NA				
Drainage	NA				
Gas	NA				
Compressed air	NA				
Steam	NA				
Others					
DIRECT DEMANDS ON FLOOR AND WALL				<p>Key</p> <p>1 Linen closet with shelving</p>	
Loading	light : MEDIUM : heavy				
Spillage	NA				
Foot traffic	LIGHT : medium : heavy				
Wheel traffic	NA				
Impacts	NA				
Abrasion	NA				
Easy maintenance	essential: DESIRABLE: unnecessary	SPACE DEMANDS (Total Minimum Space Required in sq.m.): 25.50			
Vibration free	essential: DESIRABLE: unnecessary	Space Components	Minimum Space Required/Component		
Door sets	ordinary access door				
Windows	clear, solar control	REGULATIONS AND NOTES:			
Internal glazing	nil				

Hospital:  Tertiary, 100-Bed	ROOM DATA SHEET		Department of Health  HEALTH INFRASTRUCTURE SERVICE	
Updated Reference: May 1992	Department: LINEN AND LAUNDRY	Room Title: RECEIVING AND SORTING AREA	Reference Sheet Number: 100B-EN-RDS03A	
FUNCTIONAL DESIGN REQUIREMENTS:				
<p>This activity space provides facilities needed for the following activities:</p> <ul style="list-style-type: none"> <li>a. Laundry worker counts soiled linen with Nursing attendant and tally the number with the linen list.</li> <li>b. Laundry worker inspects soiled linen and segregate those that need repair or those to be condemned, and linens to be washed</li> <li>c. Temporary transit area for soiled linen.</li> <li>d. Soiled linen are sorted according to grouping system being adapted prior to washing.</li> </ul> <p>People Involved</p> <p>3 x Laundry Workers</p> <p>Planning Relationships:</p> <ul style="list-style-type: none"> <li>a. Adjacent to Washing Area.</li> <li>b. Close to Linen Office and Work Room.</li> </ul>	EQUIPMENT AND ACCESSORY CHECKLIST	QUANTITY	REMARKS	
	Sorting bins Dirty linen trolley	1 1		
	FURNITURE AND FIXTURE CHECKLIST	QUANTITY	REMARKS	
	Tiled washing trough			
	ADDITIONAL EQUIPMENT AND ENGINEERING TERMINALS	QUANTITY	REMARKS	
	Outlet, 10A, 2P, 240V	2	grounding type, parallel slots	

Hospital Tertiary, 100-Bed	ROOM DATA SHEET		Department of Health HEALTH INFRASTRUCTURE SERVICE
Updated Reference: November 1991	Department: LINEN AND LAUNDRY	Room Title: RECEIVING AND SORTING AREA	Reference Sheet Number: 100B-EN-RDS03B
TECHNICAL DESIGN DATA:			
ENVIRONMENTAL CONDITIONS	DESIGN DATA	ENVIRONMENTAL CONDITIONS	DESIGN DATA
AIR		LIGHTING AND VISUAL	
Outdoor air temperature (deg. C)	ave. local station temp. reading	General illumination (LUX)	250-500
Room Temperature	atmospheric	Night illumination (LUX)	NA
Mechanical ventilation		Task illumination (LUX)	NA
Volume (cu m /hr -person)	NA	Colour rendering	ESSENTIAL desirable unnecessary
Velocity (m /hr.)	NA	Standby light	essential DESIRABLE unnecessary
Pressure		Emergency light	essential desirable UNNECESSARY
Exhaust (psi)	NA	Daylight	essential DESIRABLE unnecessary
Inlet (psi)	NA	View out	essential DESIRABLE unnecessary
% Dust filtration	NA	Privacy	essential desirable UNNECESSARY
Humidity (%RH)	NA	Black out	essential desirable UNNECESSARY
Cooling load (TR)	NA		
SOUND		SAFETY	
Acceptable sound level (db)	60	Accessible hot surface	NA
Speech privacy	essential desirable UNNECESSARY	Maximum temperature (deg. C)	NA
Quality which cannot be tolerated	NA	Domestic hot water	NA
		Maximum temperature (deg. C)	NA
		Access limit	linen and laundry staff
		Fire risk	LOW medium high
		Other risks	NA

Hospital:	ROOM DATA SHEET		Department of Health HEALTH INFRASTRUCTURE SERVICE				
Tertiary, 100-Bed							
Updated Reference: May 1992	Department: LINEN AND LAUNDRY	Room Title: RECEIVING AND SORTING AREA	Reference Sheet Number: 100B-EN-RDS03C				
TECHNICAL DESIGN DATA:		LAYOUT OF ROOM AND SPACE COMPONENTS:					
DIRECT SERVICES	DESIGN DATA	<p>Scale 1:150 mts.</p>					
Disposal	hospital solid waste type: A,E						
Hot water	NA						
Cold water	required at washing trough						
Drainage	req'd at washing trough and floor						
Gas	NA						
Compressed air	NA						
Steam	NA						
Others							
DIRECT DEMANDS ON FLOOR AND WALL							
Loading	NA						
Spillage	NA						
Foot traffic	light : MEDIUM : heavy						
Wheel traffic	light : MEDIUM : heavy						
Impacts	NA						
Abrasion	NA						
Easy maintenance	essential: DESIRABLE: unnecessary						
Vibration free	essential: DESIRABLE: unnecessary						
Door sets	linen trolley access						
Windows	clear	<p>SPACE DEMANDS (Total Minimum Space Required in sq m): 57.00</p> <table border="1"> <thead> <tr> <th>Space Components</th> <th>Minimum Space Required/Component</th> </tr> </thead> <tbody> <tr> <td></td> <td></td> </tr> </tbody> </table>		Space Components	Minimum Space Required/Component		
Space Components	Minimum Space Required/Component						
Internal glazing	nil	REGULATIONS AND NOTES					





Hospital	<b>ROOM DATA SHEET</b>		Department of Health
Tertiary, 100-Bed			HEALTH INFRASTRUCTURE SERVICE
Updated Reference: November 1991	Department: LINEN AND LAUNDRY	Room Title: WASHING AREA	Reference Sheet Number: 100B-EN-RDS04B
TECHNICAL DESIGN DATA			
ENVIRONMENTAL CONDITIONS	DESIGN DATA	ENVIRONMENTAL CONDITIONS	DESIGN DATA
AIR		LIGHTING AND VISUAL	
Outdoor air temperature (deg. C)	ave. local station temp. reading	General illumination (LUX)	500
Room Temperature	atmosphenc	Night illumination (LUX)	NA
Mechanical ventilation		Task illumination (LUX)	NA
Volume (cu. m./hr. /person)	NA	Colour rendering	ESSENTIAL desirable unnecessary
Velocity (m/hr.)	NA	Standby light	essential DESIRABLE unnecessary
Pressure		Emergency light	essential desirable UNNECESSARY
Exhaust (psi)	NA	Daylight	ESSENTIAL desirable unnecessary
Inlet (psi)	NA	View out	essential DESIRABLE unnecessary
% Dust filtration	NA	Privacy	essential desirable UNNECESSARY
Humidity (%RH)	NA	Black out	essential desirable UNNECESSARY
Cooling load (TR)	NA		
SOUND		SAFETY	
Acceptable sound level (dB)	60	Accessible hot surface	NA
Speech privacy	essential desirable UNNECESSARY	Maximum temperature (deg. C)	NA
Quality which cannot be tolerated	NA	Domestic hot water	NA
		Maximum temperature (deg. C)	NA
		Access limit	linen and laudry staff
		Fire risk	LOW medium high
		Other risks	NA

Hospital:	ROOM DATA SHEET		Department of Health
Tertiary, 100-Bed			HEALTH INFRASTRUCTURE SERVICE
Updated Reference: May 1992	Department: LINEN AND LAUNDRY	Room Title WASHING AREA	Reference Sheet Number: 100B-EN-RDS04C
TECHNICAL DESIGN DATA:		LAYOUT OF ROOM AND SPACE COMPONENTS:	
DIRECT SERVICES	DESIGN DATA	Scale 1:100 mts.	
Disposal	hospital solid waste type A,E		
Hot water	NA		
Cold water	required at laundry tubs and washer		
Drainage	req'd. at laundry tubs, washer and floor		
Gas	NA		
Compressed air	NA		
Steam	NA		
Others			
DIRECT DEMANDS ON FLOOR AND WALL			
Loading	light MEDIUM heavy		
Spillage	slight : occasional : FREQUENT		
Foot traffic	light : MEDIUM : heavy		
Wheel traffic	NA		
Impacts	NA		
Abrasion	NA		
Easy maintenance	ESSENTIAL desirable unnecessary		
Vibration free	ESSENTIAL desirable unnecessary		
Door sets	equipment and trolley access	SPACE DEMANDS (Total Minimum Space Required in sq. m.): 62.00	
Windows	clear	Space Components	Minimum Space Required/Component
Internal glazing	nil	Washing Area	51.00 sq. m.
		Laundry Supply Storage Area	11.00 sq. m.
		REGULATIONS AND NOTES:	

Key

- |                                    |                                    |
|------------------------------------|------------------------------------|
| 1 Starch cooker, 5 gals.           | 7 Sump                             |
| 2 Soap tank, 60 gals.              | 8 Shakeout table                   |
| 3 Metal washer, 760 x 510          | 9 Floor drain                      |
| 4 Metal washer, 1067 x 1371        | 10 Double compartment laundry tubs |
| 5 Platform scale                   | 11 Open shelving                   |
| 6 Extractor, 1-508mm. and 1-762mm. | 12 Supply storage cabinets         |

Hospital:  Tertiary, 100-Bed	ROOM DATA SHEET		Department of Health  HEALTH INFRASTRUCTURE SERVICE
Updated Reference: May 1992	Department: LINEN AND LAUNDRY	Room Title: PRESSING AND IRONING AREA	Reference Sheet Number: 100B-EN-RDS05A

**FUNCTIONAL DESIGN REQUIREMENTS:**

<p>This activity space provides facilities needed for the following activities:</p> <ul style="list-style-type: none"> <li>a. Laundry worker inspect linen brought in from the drying area and segregate torn linen to be mended.</li> <li>b. Laundry worker shake out, press and iron clean linen brought in from the drying area</li> </ul> <p>People Involved:</p> <p>3 x Laundry Workers</p> <p>Planning Relationships:</p> <ul style="list-style-type: none"> <li>a. Close to Washing Area.</li> <li>b. Close to Linen Office and Work Room.</li> </ul>	EQUIPMENT AND ACCESSORY CHECKLIST	QUANTITY	REMARKS	
	Mushroom, press Press, 1300mm Ironing board Uniform board Flatwork ironer, 2 roll, 2800 mm or 3300mm. Compressor Electric iron	2 1 1 2 1 1 1		
	FURNITURE AND FIXTURE CHECKLIST	QUANTITY	REMARKS	
	Table 900x3050	1		
	ADDITIONAL EQUIPMENT AND ENGINEERING TERMINALS	QUANTITY	REMARKS	
	Rail, curtain, window Outlet, 10A, 2P, 240V, duplex Outlet, 15A, 2P, 240V, single	1 5 2	grounding type, parallel slots grounding type tandem slots	

Hospital	ROOM DATA SHEET		Department of Health
Tertiary, 100-Bed.			HEALTH INFRASTRUCTURE SERVICE
Updated Reference: November 1991	Department LINEN AND LAUNDRY	Room Title PRESSING AND IRONING AREA	Reference Sheet Number: 100-B-EN-RDS05B
TECHNICAL DESIGN DATA			
ENVIRONMENTAL CONDITIONS	DESIGN DATA	ENVIRONMENTAL CONDITIONS	DESIGN DATA
AIR		LIGHTING AND VISUAL	
Outdoor air temperature (deg C)	ave local station temp reading	General illumination (LUX)	500
Room Temperature (deg C)	atmospheric	Night illumination (LUX)	NA
Mechanical ventilation		Task illumination (LUX)	NA
Volume (cu m /hr -person)	NA	Colour rendering	ESSENTIAL: desirable: unnecessary
Velocity (m /hr )	NA	Standby light	ESSENTIAL: desirable: unnecessary
Pressure		Emergency light	essential: DESIRABLE: unnecessary
Exhaust (psi)	NA	Daylight	essential: DESIRABLE: unnecessary
Inlet (psi)	NA	View out	essential: DESIRABLE: unnecessary
%Dust filtration	NA	Privacy	essential: desirable: UNNECESSARY
Humidity (%RH)	NA	Black out	essential: desirable: UNNECESSARY
Cooling load (TR)	NA		
SOUND			
Acceptable sound level (db)	60	SAFETY	
Speech privacy	essential: desirable: UNNECESSARY	Accessible hot surface:	
Quality which cannot be tolerated	NA	Maximum temperature (deg C)	100
		Domestic hot water:	NA
		Maximum temperature (deg C)	NA
		Access limit	linen and laundry workers
		Fire risk	low: medium: HIGH
		Other risks	NA

Hospital:  Tertiary, 100-Bed	<b>ROOM DATA SHEET</b>		Department of Health  HEALTH INFRASTRUCTURE SERVICE
Updated Reference: May 1992	Department: LINEN AND LAUNDRY	Room Title: TOILET	Reference Sheet Number: 100B-EN-RDS06A

**FUNCTIONAL DESIGN REQUIREMENTS:**

<p>This activity space provides facilities needed for the following activities:</p> <ul style="list-style-type: none"> <li>a. Laundry Unit Employees to change from street clothes to work clothes.</li> <li>b. Laundry Unit Employees to perform personal hygiene activities.</li> <li>c. Use of toilet facilities</li> </ul> <p>People Involved:</p> <p>Laundry Unit Workers</p> <p>Planning Relationships:</p> <ul style="list-style-type: none"> <li>a. Located within the Laundry Department</li> </ul>	<b>EQUIPMENT AND ACCESSORY CHECKLIST</b>	<b>QUANTITY</b>	<b>REMARKS</b>
	<b>FURNITURE AND FIXTURE CHECKLIST</b>	<b>QUANTITY</b>	<b>REMARKS</b>
	Water closet Lavatory	1 1	
	<b>ADDITIONAL EQUIPMENT AND ENGINEERING TERMINALS</b>	<b>QUANTITY</b>	<b>REMARKS</b>
Rail, curtain, window	1		



Hospital:  Tertiary, 100-Bed	ROOM DATA SHEET		Department of Health  HEALTH INFRASTRUCTURE SERVICE
Updated Reference: May 1992	Department: LINEN AND LAUNDRY	Room Title: TOILET	Reference Sheet Number: 100B-EN-RDS06B
TECHNICAL DESIGN DATA:			
ENVIRONMENTAL CONDITIONS	DESIGN DATA	ENVIRONMENTAL CONDITIONS	DESIGN DATA
AIR		LIGHTING AND VISUAL	
Outdoor air temperature (deg. C)	ave. local station temp. reading	General illumination (LUX)	150
Room Temperature (deg. C)	atmospheric	Night illumination (LUX)	NA
Mechanical ventilation:		Task illumination (LUX)	NA
Volume (cu. m./hr./person)	NA	Colour rendering	essential desirable UNNECESSARY
Velocity (m./hr.)	NA	Standby light	essential DESIRABLE unnecessary
Pressure:		Emergency light	essential desirable UNNECESSARY
Exhaust (psi)	NA	Daylight	essential DESIRABLE unnecessary
Inlet (psi)	NA	View out	essential desirable UNNECESSARY
%Dust filtration	NA	Privacy	essential DESIRABLE unnecessary
Humidity (%RH)	NA	Black out	essential desirable UNNECESSARY
Cooling load (TR)	NA		
SOUND			
Acceptable sound level (db)	60	SAFETY	
Speech privacy	essential desirable UNNECESSARY	Accessible hot surface:	NA
Quality which cannot be tolerated	NA	Maximum temperature (deg. C)	NA
		Domestic hot water:	NA
		Maximum temperature (deg. C)	NA
		Access limit	laundry unit workers
		Fire risk	LOW : medium : high
		Other risk	NA





Hospital:  Tertiary, 100-Bed	ROOM DATA SHEET		Department of Health  HEALTH INFRASTRUCTURE SERVICE
Updated Reference: May 1992	Department: BUILDING MAINTENANCE	Room Title: ELECTRICAL ROOM	Reference Sheet Number: 100B-EN-RDS07B
TECHNICAL DESIGN DATA:			
ENVIRONMENTAL CONDITIONS	DESIGN DATA	ENVIRONMENTAL CONDITIONS	DESIGN DATA
AIR		LIGHTING AND VISUAL	
Outdoor air temperature (deg. C)	ave. local station temp. reading	General illumination (LUX)	150
Room Temperature (deg. C)	atmospheric	Night illumination (LUX)	NA
Mechanical ventilation:		Task illumination (LUX)	500
Volume (cu. m /hr -person)	NA	Colour rendering	essential : DESIRABLE : unnecessary
Velocity (m /hr )	NA	Standby light	ESSENTIAL : desirable : unnecessary
Pressure:		Emergency light	ESSENTIAL : desirable : unnecessary
Exhaust (psi)	NA	Daylight	essential : DESIRABLE : unnecessary
Inlet (psi)	NA	View out	essential : DESIRABLE : unnecessary
%Dust filtration	NA	Privacy	essential : desirable : UNNECESSARY
Humidity (%RH)	NA	Black out	essential : desirable : UNNECESSARY
Cooling load (TR)	NA		
SOUND			
Acceptable sound level (db)	60	SAFETY	
Speech privacy	essential : desirable : UNNECESSARY	Accessible hot surface:	NA
Quality which cannot be tolerated	NA	Maximum temperature (deg. C)	NA
		Domestic hot water:	NA
		Maximum temperature (deg. C)	NA
		Access limit	maintenance staff
		Fire risk	low : medium : HIGH
		Other risks	NA

Hospital:  Tertiary, 100-Bed	ROOM DATA SHEET		Department of Health  HEALTH INFRASTRUCTURE SERVICE
Updated Reference: May 1992	Department: BUILDING MAINTENANCE	Room Title: ELECTRICAL ROOM	Reference Sheet Number: 100B-EN-RDS07C
TECHNICAL DESIGN DATA:		LAYOUT OF ROOM AND SPACE COMPONENTS:	
DIRECT SERVICES	DESIGN DATA	Scale 1:100 mts.	
Disposal	NA		
Hot water	NA		
Cold water	NA		
Drainage	NA		
Gas	NA		
Compressed air	NA		
Steam	NA		
Others			
DIRECT DEMANDS ON FLOOR AND WALL			
Loading	NA		
Spillage	NA		
Foot traffic:	light MEDIUM: heavy		
Wheel traffic	NA		
Impacts	NA		
Abrasion	NA		
Easy maintenance	essential: DESIRABLE: unnecessary	SPACE DEMANDS (Total Minimum Space Required in sq. m.): 18.00	
Vibration free	ESSENTIAL: desirable: unnecessary	Space Components	Minimum Space Required/Component
Door sets	ordinary access door		
Windows	clear	REGULATIONS AND NOTES:	
Internal glazing	nil		



Hospital:  Tertiary, 100-Bed	ROOM DATA SHEET		Department of Health  HEALTH INFRASTRUCTURE SERVICE
Updated Reference: May 1992	Department: MAINTENANCE AND MOTORPOOL	Room Title: OFFICE	Reference Sheet Number 100B-EN-RDS08A

**FUNCTIONAL DESIGN REQUIREMENTS:**

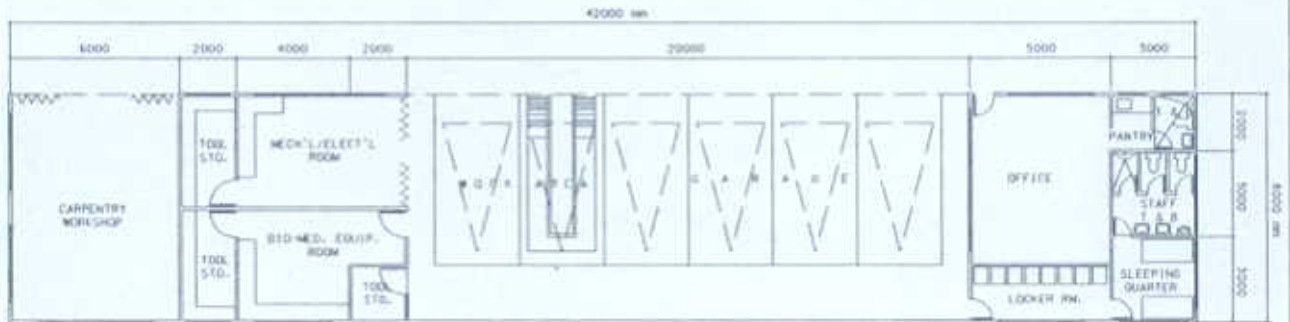
<p>This activity space provides facilities needed for the following activities</p> <ul style="list-style-type: none"> <li>a. Maintenance staff reads, write and uses telephone in work station.</li> <li>b. Maintenance staff receives visitors.</li> <li>c. Maintenance staff stores, files, and retrieves records.</li> <li>d. Maintenance staff uses typewriter.</li> <li>e. Requisition of spare parts.</li> </ul> <p>People Involved</p> <ul style="list-style-type: none"> <li>1 x Engineer</li> <li>1 x Building Maintenance Worker</li> <li>1 x Clerk</li> </ul> <p>Planning Relationships</p> <ul style="list-style-type: none"> <li>a. Close to Garage and Work Area</li> </ul>	EQUIPMENT AND ACCESSORY CHECKLIST	QUANTITY	REMARKS	
	Typewriter Drafting tools Calculator Sink in counter	1 1 set 2 1		
	FURNITURE AND FIXTURE CHECKLIST	QUANTITY	REMARKS	
	Desk, 750x1500 Stool with back rest Desk, 750x1200 Bench, 400x1500 Steel filing cabinet, 500x700 Shelves, 400x2000 Typewriter table, 400x800 Drafting table Swivel chair Chair, upright, stacking Water closet Lavatory	1 1 1 1 3 1 1 1 1 3 1 1		
	ADDITIONAL EQUIPMENT AND ENGINEERING TERMINALS	QUANTITY	REMARKS	
	Rail, curtain, window Outlet, intercom Outlet, 10A, 2P, 240V, duplex  Outlet, 15A, 2P, 240V, single  Outlet, telephone Smoke detector	4 1 6  2  1 1	  grounding type, parallel slots grounding type, tandem slots (1-AC, 1-stove)	

Hospital Tertiary, 100-Bed	<b>ROOM DATA SHEET</b>		Department of Health HEALTH INFRASTRUCTURE SERVICE
Updated Reference: May 1992	Department: MAINTENANCE AND MOTORPOOL	Room Title: OFFICE	Reference Sheet Number: 100B-EN-RDS08B
<b>TECHNICAL DESIGN DATA</b>			
ENVIRONMENTAL CONDITIONS	DESIGN DATA	ENVIRONMENTAL CONDITIONS	DESIGN DATA
AIR		LIGHTING AND VISUAL	
Outdoor air temperature (deg. C)	ave. local station temp. reading	General illumination (LUX)	250-500
Room Temperature	25	Night illumination (LUX)	NA
Mechanical ventilation		Task illumination (LUX)	500
Volume (cu m /hr. /person)	12.75	Colour rendering	essential DESIRABLE unnecessary
Velocity (m/hr.)	NA	Standby light	essential DESIRABLE unnecessary
Pressure		Emergency light	essential desirable UNNECESSARY
Exhaust (psi)	NA	Daylight	essential desirable UNNECESSARY
Inlet (psi)	NA	View out	essential DESIRABLE unnecessary
% Dust filtration	93% - 99% @ .1 micron	Privacy	essential DESIRABLE unnecessary
Humidity (%RH)	50	Black out	essential desirable UNNECESSARY
Cooling load (TR)	2		
SOUND		SAFETY	
Acceptable sound level (db)	50	Accessible hot surface:	NA
Speech privacy	ESSENTIAL desirable unnecessary	Maximum temperature (deg. C)	NA
Quality which cannot be tolerated:	tonal impact	Domestic hot water:	NA
		Maximum temperature (deg. C)	NA
		Access limit	maintenance staff
		Fire risk	LOW medium high
		Other risks	NA

Hospital:  Tertiary, 100-Bed	<b>DEPARTMENT DATA SHEET</b>	Department of Health  HEALTH INFRASTRUCTURE SERVICE
Updated Reference: May 1992	Department: <b>MAINTENANCE AND MOTORPOOL</b>	Reference Sheet Number: 100B-EN-DDS02

LAYOUT PER DEPARTMENT SHOWING ROOMS AND SPACE COMPONENTS:

Scale 1:150 mts.



Hospital:  Tertiary, 100-Bed	ROOM DATA SHEET		Department of Health  HEALTH INFRASTRUCTURE SERVICE
Updated Reference: May 1992	Department: MAINTENANCE AND MOTORPOOL	Room Title: BIO-MEDICAL EQUIPMENT ROOM	Reference Sheet Number: 100B-EN-RDS09A
<b>FUNCTIONAL DESIGN REQUIREMENTS:</b>			
<p>This activity space provides facilities needed for the following activities:</p> <ul style="list-style-type: none"> <li>a. Repair of bio-medical equipment</li> <li>b. Assembly of bio-medical equipment</li> <li>c. Cleaning of bio-medical equipment</li> </ul> <p>People Involved</p> <ul style="list-style-type: none"> <li>1 x Electrician</li> <li>1 x Engineer</li> <li>1 x Bio-medical Technician</li> </ul> <p>Planning Relationships:</p> <ul style="list-style-type: none"> <li>a. Adjacent to Garage and Work Area</li> <li>b. Adjacent to Mechanical and Electrical Room.</li> <li>c. Close to Carpentry Workshop</li> </ul>	<b>EQUIPMENT AND ACCESSORY CHECKLIST</b>	<b>QUANTITY</b>	<b>REMARKS</b>
	Oscilloscope	1	
	Welding 500amps	1	
	Electric drill	1	
	Multi tester	1	
	Clamp tester	1	
Insulator tester	1		
Soldering gun	1		
Chain block	1		
Electric planer	1		
Blow torch	1		
Assorted screw drivers	1 set		
Pliers, crimper	1		
Pipe binder, pipe threader	1		
	<b>FURNITURE AND FIXTURE CHECKLIST</b>	<b>QUANTITY</b>	<b>REMARKS</b>
	Counter, 900mm high, cabinet below	1	
	Stool	2	
	Shelves, 500mm deep		
	<b>ADDITIONAL EQUIPMENT AND ENGINEERING TERMINALS</b>	<b>QUANTITY</b>	<b>REMARKS</b>
	Outlet, intercom	1	
	Outlet, 10A, 2P, 240V, duplex	4	grounding type, parallel slots
	Outlet, 15A, 2P, 240V, single	2	grounding type, tandem slots

Hospital	ROOM DATA SHEET		Department of Health
Tertiary, 100-Bed			HEALTH INFRASTRUCTURE SERVICE
Updated Reference May 1992	Department: MAINTENANCE AND MOTORPOOL	Room Title: BIO-MEDICAL EQUIPMENT ROOM	Reference Sheet Number: 100B-EN-RDS09B
TECHNICAL DESIGN DATA			
ENVIRONMENTAL CONDITIONS	DESIGN DATA	ENVIRONMENTAL CONDITIONS	DESIGN DATA
AIR		LIGHTING AND VISUAL	
Outdoor air temperature (deg. C)	ave. local station temp. reading	General illumination (LUX)	500
Room Temperature	ambient	Night illumination (LUX)	NA
Mechanical ventilation		Task illumination (LUX)	1000
Volume (cu. m /hr / person)	NA	Colour rendering	essential / desirable / UNNECESSARY
Velocity (m /hr)	NA	Standby light	essential / DESIRABLE / unnecessary
Pressure		Emergency light	essential / DESIRABLE / unnecessary
Exhaust (psi)	NA	Daylight	essential / DESIRABLE / unnecessary
Inlet (psi)	NA	View out	essential / DESIRABLE / unnecessary
% Dust filtration	NA	Privacy	essential / desirable / UNNECESSARY
Humidity (%RH)	NA	Black out	essential / desirable / UNNECESSARY
Cooling load (TR)	NA		
SOUND		SAFETY	
Acceptable sound level (db)	60	Accessible hot surface	NA
Speech privacy	essential / desirable / UNNECESSARY	Maximum temperature (deg. C)	NA
Quality which cannot be tolerated	NA	Domestic hot water	NA
		Maximum temperature (deg. C)	NA
		Access limit	maintenance staff
		Fire risk	low / MEDIUM / high
		Other risks	NA



Hospital:  Tertiary, 100-Bed	<b>ROOM DATA SHEET</b>		Department of Health  HEALTH INFRASTRUCTURE SERVICE																																																
Updated Reference: May 1992	Department: MAINTENANCE AND MOTORPOOL	Room Title: BIO-MEDICAL EQUIPMENT ROOM	Reference Sheet Number: 100B-EN-RDS09C																																																
<b>TECHNICAL DESIGN DATA:</b>		<b>LAYOUT OF ROOM AND SPACE COMPONENTS:</b>																																																	
<table border="1"> <thead> <tr> <th>DIRECT SERVICES</th> <th>DESIGN DATA</th> </tr> </thead> <tbody> <tr> <td>Disposal</td> <td>hospital solid waste type A</td> </tr> <tr> <td>Hot water</td> <td>NA</td> </tr> <tr> <td>Cold water</td> <td>NA</td> </tr> <tr> <td>Drainage</td> <td>NA</td> </tr> <tr> <td>Gas</td> <td>NA</td> </tr> <tr> <td>Compressed air</td> <td>NA</td> </tr> <tr> <td>Steam</td> <td>NA</td> </tr> <tr> <td>Others</td> <td></td> </tr> <tr> <td colspan="2"><b>DIRECT DEMANDS ON FLOOR AND WALL</b></td> </tr> <tr> <td>Loading</td> <td>light : MEDIUM : heavy</td> </tr> <tr> <td>Spillage</td> <td>NA</td> </tr> <tr> <td>Foot traffic</td> <td>light : MEDIUM : heavy</td> </tr> <tr> <td>Wheel traffic</td> <td>NA</td> </tr> <tr> <td>Impacts</td> <td>NA</td> </tr> <tr> <td>Abrasion</td> <td>NA</td> </tr> <tr> <td>Easy maintenance</td> <td>ESSENTIAL : desirable : unnecessary</td> </tr> <tr> <td>Vibration free</td> <td>essential : desirable : UNNECESSARY</td> </tr> <tr> <td>Door sets</td> <td>equipment access</td> </tr> <tr> <td>Windows</td> <td>clear</td> </tr> <tr> <td>Internal glazing</td> <td>nil</td> </tr> </tbody> </table>		DIRECT SERVICES	DESIGN DATA	Disposal	hospital solid waste type A	Hot water	NA	Cold water	NA	Drainage	NA	Gas	NA	Compressed air	NA	Steam	NA	Others		<b>DIRECT DEMANDS ON FLOOR AND WALL</b>		Loading	light : MEDIUM : heavy	Spillage	NA	Foot traffic	light : MEDIUM : heavy	Wheel traffic	NA	Impacts	NA	Abrasion	NA	Easy maintenance	ESSENTIAL : desirable : unnecessary	Vibration free	essential : desirable : UNNECESSARY	Door sets	equipment access	Windows	clear	Internal glazing	nil	<p style="text-align: right;">Scale 1:150 mts.</p> <p><b>Key</b></p> <table border="0"> <tr> <td>1. Counter, 900mm. high, cabinets below</td> <td>3. Shelves, 500mm deep</td> </tr> <tr> <td>2. Stool</td> <td>4. Bio-medical Equipment Room</td> </tr> <tr> <td></td> <td>5. Tool Storage</td> </tr> </table>		1. Counter, 900mm. high, cabinets below	3. Shelves, 500mm deep	2. Stool	4. Bio-medical Equipment Room		5. Tool Storage
DIRECT SERVICES	DESIGN DATA																																																		
Disposal	hospital solid waste type A																																																		
Hot water	NA																																																		
Cold water	NA																																																		
Drainage	NA																																																		
Gas	NA																																																		
Compressed air	NA																																																		
Steam	NA																																																		
Others																																																			
<b>DIRECT DEMANDS ON FLOOR AND WALL</b>																																																			
Loading	light : MEDIUM : heavy																																																		
Spillage	NA																																																		
Foot traffic	light : MEDIUM : heavy																																																		
Wheel traffic	NA																																																		
Impacts	NA																																																		
Abrasion	NA																																																		
Easy maintenance	ESSENTIAL : desirable : unnecessary																																																		
Vibration free	essential : desirable : UNNECESSARY																																																		
Door sets	equipment access																																																		
Windows	clear																																																		
Internal glazing	nil																																																		
1. Counter, 900mm. high, cabinets below	3. Shelves, 500mm deep																																																		
2. Stool	4. Bio-medical Equipment Room																																																		
	5. Tool Storage																																																		
		SPACE DEMANDS (Total Minimum Space Required in sq.m.): 28.00																																																	
		Space Components	Minimum Space Required/Component																																																
		Bio-medical Equipment Room	20.00 sq. m																																																
		Tool Storage	8.00 sq. m																																																
		REGULATIONS AND NOTES																																																	

Hospital:  Tertiary, 100-Bed	<b>ROOM DATA SHEET</b>		Department of Health  HEALTH INFRASTRUCTURE SERVICE
Updated Reference: May 1992	Department: MAINTENANCE AND MOTORPOOL	Room Title: OFFICE	Reference Sheet Number: 100B-EN-RDS08C
<b>TECHNICAL DESIGN DATA:</b>		<b>LAYOUT OF ROOM AND SPACE COMPONENTS:</b>	
<b>DIRECT SERVICES</b>	<b>DESIGN DATA</b>	Scale 1:150 mts.	
Disposal	hospital solid waste type A		
Hot water	NA		
Cold water	reg'd at toilet & pantry fixtures		
Drainage	reg'd at toi. & pantry fix. & fir		
Gas	NA		
Compressed air	NA		
Steam	NA		
Others			
<b>DIRECT DEMANDS ON FLOOR AND WALL</b>			
Loading	NA		
Spillage	NA		
Foot traffic	LIGHT : medium : heavy		
Wheel traffic	LIGHT : medium : heavy		
Impacts	NA		
Abrasion	NA		
Easy maintenance	ESSENTIAL : desirable : unnecessary	<b>Key</b>	
Vibration free	ESSENTIAL : desirable : unnecessary	1. Swivel chair 2. Stool with back rest 3. Desk, 750x1500 4. Bench, 400x1500 5. Steel filing cabinet, 500x700 6. Sink in counter 7. Lavatory 8. Water closet 9. Shelves, 400x2000 10. Typewriter table, 400x800 11. Draft table 12. Chair, upright, stacking 13. Desk, 750x1200	
Door sets	wheelchair access	<b>SPACE DEMANDS (Total Minimum Space Required in sq. m.) 36.00</b>	
Windows	clear, solar control	Space Components	Minimum Space Required/Component
		Office	30.00 sq. m.
		Pantry	3.00 sq. m.
		Toilet	3.00 sq. m.
		<b>REGULATIONS AND NOTES</b>	
Internal glazing	nil		

Hospital:  Tertiary, 100-Bed	<b>ROOM DATA SHEET</b>		Department of Health  HEALTH INFRASTRUCTURE SERVICE
Updated Reference May 1992	Department: MAINTENANCE AND MOTORPOOL	Room Title: MECHANICAL AND ELECTRICAL ROOM	Reference Sheet Number: 100B-EN-RDS10A

**FUNCTIONAL DESIGN REQUIREMENTS:**

<p>This activity space provides facilities needed for the following activities:</p> <ul style="list-style-type: none"> <li>a. Welding works on hospital equipment</li> <li>b. Repair of hospital equipment</li> <li>c. Assembly of hospital equipment</li> </ul> <p>People Involved</p> <ul style="list-style-type: none"> <li>1. x. Mechanic</li> <li>1. x. Electrician</li> </ul> <p>Planning Relationships</p> <ul style="list-style-type: none"> <li>a. Adjacent to Bio-medical Equipment Room.</li> <li>b. Adjacent to Garage and Work Area</li> <li>c. Close to Carpentry Workshop.</li> </ul>	<b>EQUIPMENT AND ACCESSORY CHECKLIST</b>	<b>QUANTITY</b>	<b>REMARKS</b>
	Mechanical tools	1 set	
	Electrical tools	1 set	
	Welding machine	1	
Acetyline	1		
Bench grinder	1		
Pipe vise	1		
Anvil	1		
Compressor	1		
Chainblock	1		
Crocodile jack	1		
Battery recharger	1		
	<b>FURNITURE AND FIXTURE CHECKLIST</b>	<b>QUANTITY</b>	<b>REMARKS</b>
	Stool	2	
	Counter, 900 mm, high cabinets below		
	Shelves, 500mm deep		
	Work table	1	
	<b>ADDITIONAL EQUIPMENT AND ENGINEERING TERMINALS</b>	<b>QUANTITY</b>	<b>REMARKS</b>
	Outlet, intercom	1	
	Outlet, 10A, 2P, 240V, duplex	4	grounding type: parallel slots
	Outlet, 15A, 2P, 240V, single	1	grounding type: tandem slots

Hospital:  Tertiary, 100-Bed	ROOM DATA SHEET		Department of Health  HEALTH INFRASTRUCTURE SERVICE
Updated Reference May 1992	Department: MAINTENANCE AND MOTORPOOL	Room Title: MECHANICAL AND ELECTRICAL ROOM	Reference Sheet Number: 100B-EN-RDS10B
TECHNICAL DESIGN DATA:			
ENVIRONMENTAL CONDITIONS	DESIGN DATA	ENVIRONMENTAL CONDITIONS	DESIGN DATA
AIR		LIGHTING AND VISUAL	
Outdoor air temperature (deg. C)	ave. local station temp. reading	General illumination (LUX)	500
Room Temperature (deg. C)	ambient	Night illumination (LUX)	NA
Mechanical ventilation		Task illumination (LUX)	1000
Volume (cu. m./hr. -person)	NA	Colour rendering	essential desirable UNNECESSARY
Velocity (m./hr.)	NA	Standby light	essential DESIRABLE unnecessary
Pressure		Emergency light	essential desirable UNNECESSARY
Exhaust (psi)	NA	Daylight	essential DESIRABLE unnecessary
Inlet (psi)	NA	View out	essential DESIRABLE unnecessary
%Dust filtration	NA	Privacy	essential desirable UNNECESSARY
Humidity (%RH)	NA	Black out	essential desirable UNNECESSARY
Cooling load (TR)	NA		
SOUND			
Acceptable sound level (db)	60	SAFETY	
Speech privacy	essential desirable UNNECESSARY	Accessible hot surface:	NA
Quality which cannot be tolerated	NA	Maximum temperature (deg. C)	NA
		Domestic hot water:	NA
		Maximum temperature (deg. C)	NA
		Access limit	maintenance staff
		Fire risk	low : MEDIUM high
		Other risks	NA







Hospital:  Tertiary, 100-Bed	ROOM DATA SHEET		Department of Health  HEALTH INFRASTRUCTURE SERVICE
Updated Reference: May 1992	Department: MAINTENANCE AND MOTORPOOL	Room Title: CARPENTRY WORKSHOP	Reference Sheet Number: 100B-EN-RDS11A
<b>FUNCTIONAL DESIGN REQUIREMENTS:</b>			
<p>This activity space provides facilities needed for the following activities:</p> <ul style="list-style-type: none"> <li>a. Repair of hospital furnitures and other wood works</li> <li>b. Assembly of furnitures and other wood works</li> <li>c. Painting, varnishing and refinishing of hospital furnitures and other wood works.</li> </ul> <p>People Involved:</p> <p>1 x Carpenter</p> <p>Planning Relationships:</p> <ul style="list-style-type: none"> <li>a. Close to Mechanical and Electrical Room</li> <li>b. Close to Bio-medical Equipment Room</li> </ul>	EQUIPMENT AND ACCESSORY CHECKLIST	QUANTITY	REMARKS
	White board: 1200x2400	1	
	Circular pan	1	
	Carpentry tools	1 set	
	FURNITURE AND FIXTURE CHECKLIST	QUANTITY	REMARKS
	Counter, 900mm high, cabinets below		
Stool	4		
Work table with 2" thick table top	1		
Cabinet with shelves			
Bench	2		
ADDITIONAL EQUIPMENT AND ENGINEERING TERMINALS	QUANTITY	REMARKS	
Outlet, Intercom	1		
Outlet, 10A, 2P, 240V, duplex	5	grounding type, parallel, slots	
Outlet, 15A, 2P, 240V, single	1	grounding type, tandem slots	

Hospital:  Tertiary, 100-Bed	ROOM DATA SHEET		Department of Health  HEALTH INFRASTRUCTURE SERVICE
Updated Reference May 1992	Department: MAINTENANCE AND MOTORPOOL	Room Title: CARPENTRY WORKSHOP	Reference Sheet Number: 100B-EN-RDS11B
TECHNICAL DESIGN DATA:			
ENVIRONMENTAL CONDITIONS	DESIGN DATA	ENVIRONMENTAL CONDITIONS	DESIGN DATA
AIR:		LIGHTING AND VISUAL	
Outdoor air temperature (deg C)	ave. local station temp. reading	General illumination (LUX)	500
Room Temperature (deg C)	ambient	Night illumination (LUX)	NA
Mechanical ventilation :		Task illumination (LUX)	1,000
Volume (cu m./hr.-person)	NA	Colour rendering	ESSENTIAL desirable: unnecessary
Velocity (m./hr.)	NA	Standby light	essential DESIRABLE: unnecessary
Pressure:		Emergency light	essential DESIRABLE: unnecessary
Exhaust (psi)	NA	Daylight	essential DESIRABLE: unnecessary
Inlet (psi)	NA	View out	essential DESIRABLE: unnecessary
%Dust filtration	NA	Privacy	essential desirable: UNNECESSARY
Humidity (%RH)	NA	Black out	essential desirable: UNNECESSARY
Cooling load (TR)	NA		
SOUND			
Acceptable sound level (db)	60	SAFETY	
Speech privacy	essential desirable: UNNECESSARY	Accessible hot surface	NA
Quality which cannot be tolerated	NA	Maximum temperature (deg. C)	NA
		Domestic hot water:	NA
		Maximum temperature (deg. C)	NA
		Access limit	maintenance staff
		Fire risk	LOW : medium : high
		Other risks	NA

Hospital:  Tertiary, 100-Bed	<b>ROOM DATA SHEET</b>		Department of Health  HEALTH INFRASTRUCTURE SERVICE
Updated Reference: May 1992	Department: MAINTENANCE AND MOTORPOOL	Room Title: CARPENTRY WORKSHOP	Reference Sheet Number: 100B-EN-RDS11C
<b>TECHNICAL DESIGN DATA:</b>		<b>LAYOUT OF ROOM AND SPACE COMPONENTS:</b>	
<b>DIRECT SERVICES</b>	<b>DESIGN DATA</b>	Scale 1:100 mts.	
Disposal	hospital solid waste type A		
Hot water	NA		
Cold water	NA		
Drainage	NA		
Gas	NA		
Compressed air	NA		
Steam	NA		
Others			
<b>DIRECT DEMANDS ON FLOOR AND WALL</b>			
Loading	light medium HEAVY		
Spillage	SLIGHT occasional frequent		
Foot traffic	light : MEDIUM heavy		
Wheel traffic	light : MEDIUM : heavy		
Impacts	light : MEDIUM : heavy		
Abrasion	light : MEDIUM : heavy		
Easy maintenance	ESSENTIAL desirable unnecessary		
Vibration free	essential desirable UNNECESSARY		
Door set	equipment access	<b>Key</b> 1. White board, 1200x2400 2. Stool 3. Work table with 2" thick table top 4. Counter, 900 mm high, cabinets below 5. Cabinet w/shelves 6. Bench	
Windows	clear	<b>SPACE DEMANDS (Total Minimum Space Required in sq.m.) : 48.00</b>	
Internal glazing	nil	Space Components	Minimum Space Required/Component
		<b>REGULATIONS AND NOTES:</b>	

Hospital:  Tertiary, 100-Bed	ROOM DATA SHEET		Department of Health  HEALTH INFRASTRUCTURE SERVICE
Updated Reference: May 1992	Department: MAINTENANCE AND MOTORPOOL	Room Title: LOCKER ROOM AND TOILET	Reference Sheet Number: 100B-EN-RDS12A

FUNCTIONAL DESIGN REQUIREMENTS:

<p>This activity space provides facilities needed for the following activities</p> <ul style="list-style-type: none"> <li>a. Maintenance Staff to change clothes in Locker Room &amp; T &amp; B</li> <li>b. Maintenance Staff to bathe in T &amp; B</li> <li>c. Maintenance Staff to store clothing and personal effects in the Locker Room</li> <li>d. Maintenance Staff to use temporary sleeping quarters.</li> </ul> <p>People Involved</p> <p>Maintenance Staff 1 x Drive</p> <p>Planning Relationships:</p> <ul style="list-style-type: none"> <li>a. Close to Office.</li> <li>b. Close to Garage and Work Area</li> </ul>	EQUIPMENT AND ACCESSORY CHECKLIST	QUANTITY	REMARKS	
	FURNITURE AND FIXTURE CHECKLIST	QUANTITY	REMARKS	
	Locker, 500x600 Double deck bed Chair, upright, stacking Table, 900x900 Water closet Lavatory Unnal	8 2 1 1 2 2 1		
	ADDITIONAL EQUIPMENT AND ENGINEERING TERMINALS	QUANTITY	REMARKS	
	Rail, curtain, window Outlet, 10A, 2P, 240V, single	4 3	grounding type, parallel slots	



Hospital:  Tertiary, 100-Bed	ROOM DATA SHEET		Department of Health  HEALTH INFRASTRUCTURE SERVICE
Updated Reference: May 1992	Department: MAINTENANCE AND MOTORPOOL	Room Title: LOCKER ROOM AND TOILET	Reference Sheet Number: 100B-EN-RDS128
TECHNICAL DESIGN DATA:			
ENVIRONMENTAL CONDITIONS	DESIGN DATA	ENVIRONMENTAL CONDITIONS	DESIGN DATA
AIR		LIGHTING AND VISUAL	
Outdoor air temperature (deg C)	ave. local station temp. reading	General illumination (LUX)	150
Room Temperature (deg C)	ambient	Night illumination (LUX)	NA
Mechanical ventilation:		Task illumination (LUX)	NA
Volume (cu.m./hr.-person)	NA	Colour rendering	essential desirable UNNECESSARY
Velocity (m./hr.)	NA	Standby light	essential DESIRABLE unnecessary
Pressure:		Emergency light	essential desirable UNNECESSARY
Exhaust (psi)	NA	Daylight	essential desirable UNNECESSARY
Inlet (psi)	NA	View out	essential desirable UNNECESSARY
%Dust filtration	NA	Privacy	ESSENTIAL desirable unnecessary
Humidity (%RH)	NA	Black out	essential desirable UNNECESSARY
Cooling load (TR)	NA		
SOUND			
Acceptable sound level (db)	50	SAFETY	
Speech privacy	essential desirable UNNECESSARY	Accessible hot surface:	NA
Quality which cannot be tolerated	NA	Maximum temperature (deg. C)	NA
		Domestic hot water:	NA
		Maximum temperature (deg. C)	NA
		Access limit	maintenance staff
		Fire risk	LOW : medium : high
		Other risk	NA



Hospital:  Tertiary, 100-Bed	<b>ROOM DATA SHEET</b>		Department of Health  HEALTH INFRASTRUCTURE SERVICE								
Updated Reference: May 1992	Department: MAINTENANCE AND MOTORPOOL	Room Title: LOCKER ROOM AND TOILET	Reference Sheet Number: 100B-EN-RDS12C								
TECHNICAL DESIGN DATA:		LAYOUT OF ROOM AND SPACE COMPONENTS:									
DIRECT SERVICES	DESIGN DATA	Scale 1:150 mts.									
Disposal	hospital solid waste type : A										
Hot water	NA										
Cold water	required at toilet fixtures										
Drainage	required at toilet fixtures & floor										
Gas	NA										
Compressed air	NA										
Steam	NA										
Others											
DIRECT DEMANDS ON FLOOR AND WALL											
Loading	NA										
Spillage	NA										
Foot traffic	LIGHT : medium : heavy										
Wheel traffic	NA										
Impacts	NA										
Abrasion	NA										
Easy maintenance	ESSENTIAL: desirable unnecessary	<b>Key</b> 1. Locker, 300x600 2. Double deck bed 3. Table, 900x900 4. Chair, upright, stacking 5. Lavatory 6. Urinal 7. Water closet 8. Locker Room 9. Sleeping Quarter 10. Toilet and bath									
Vibration free	ESSENTIAL: desirable unnecessary	SPACE DEMANDS (Total Minimum Space Required in sq. m.): 28.00									
Door set	ordinary access door	<table border="1"> <thead> <tr> <th>Space Components</th> <th>Minimum Space Required/Component</th> </tr> </thead> <tbody> <tr> <td>Locker Room</td> <td>10.00 sq.m.</td> </tr> <tr> <td>Toilet &amp; Bath</td> <td>9.00 sq.m.</td> </tr> <tr> <td>Sleeping Quarter</td> <td>9.00 sq.m.</td> </tr> </tbody> </table>		Space Components	Minimum Space Required/Component	Locker Room	10.00 sq.m.	Toilet & Bath	9.00 sq.m.	Sleeping Quarter	9.00 sq.m.
Space Components	Minimum Space Required/Component										
Locker Room	10.00 sq.m.										
Toilet & Bath	9.00 sq.m.										
Sleeping Quarter	9.00 sq.m.										
Windows	clear, solar control, privacy	REGULATIONS AND NOTES:									
Internal glazing	nil										

Hospital:  Tertiary, 100-Bed	<b>ROOM DATA SHEET</b>		Department of Health  HEALTH INFRASTRUCTURE SERVICE
Updated Reference: May 1992	Department: MAINTENANCE AND MOTORPOOL	Room Title: GARAGE AND WORK AREA	Reference Sheet Number: 100B-EN-RDS13A

**FUNCTIONAL DESIGN REQUIREMENTS:**

<p>This activity space provides facilities needed for the following activities:</p> <ul style="list-style-type: none"> <li>a. Mechanics checks/repairs vehicles</li> <li>b. Parking of vehicles.</li> </ul> <p>People Involved</p> <ul style="list-style-type: none"> <li>1 x Mechanic</li> <li>1 x Tire Man</li> </ul> <p>Planning Relationships:</p> <ul style="list-style-type: none"> <li>a. Close to Maintenance Office.</li> <li>b. Close to Mechanical and Electrical Room.</li> <li>c. Close to Bio-medical Equipment Room.</li> </ul>	<b>EQUIPMENT AND ACCESSORY CHECKLIST</b>	<b>QUANTITY</b>	<b>REMARKS</b>
	Air compressor	1	
	<b>FURNITURE AND FIXTURE CHECKLIST</b>	<b>QUANTITY</b>	<b>REMARKS</b>
	Shelves, 500mm deep	1	
	<b>ADDITIONAL EQUIPMENT AND ENGINEERING TERMINALS</b>	<b>QUANTITY</b>	<b>REMARKS</b>
	Outlet, 10A, 2P, 240V, duplex	4	grounding type parallel slots
Outlet, 15A, 2P, 240V single	2	grounding type tandem slots	

Hospital:  Tertiary, 100-Bed	ROOM DATA SHEET		Department of Health  HEALTH INFRASTRUCTURE SERVICE
Updated Reference: May 1992	Department: MAINTENANCE AND MOTORPOOL	Room Title: GARAGE AND WORK AREA	Reference Sheet Number: 100B-EN-RDS13B
TECHNICAL DESIGN DATA:			
ENVIRONMENTAL CONDITIONS	DESIGN DATA	ENVIRONMENTAL CONDITIONS	DESIGN DATA
AIR		LIGHTING AND VISUAL	
Outdoor air temperature (deg.C)	ave. local station temp. reading	General illumination (LUX)	150
Room Temperature (deg. C)	atmospheric	Night illumination (LUX)	NA
Mechanical ventilation:		Task illumination (LUX)	NA
Volume (cu m./hr./person)	NA	Colour rendering:	essential: DESIRABLE: unnecessary
Velocity (m./hr.)	NA	Standby light	essential: DESIRABLE: unnecessary
Pressure		Emergency light	essential: DESIRABLE: unnecessary
Exhaust (psi)	NA	Daylight	essential: DESIRABLE: unnecessary
Inlet (psi)	NA	View out	ESSENTIAL: desirable: unnecessary
%Dust filtration	NA	Privacy	essential: desirable: UNNECESSARY
Humidity (%RH)	NA	Black out	essential: desirable: UNNECESSARY
Cooling load (TR)	NA		
SOUND			
Acceptable sound level (db)	60	SAFETY	
Speech privacy	essential: desirable: UNNECESSARY	Accessible hot surface:	NA
Quality which cannot be tolerated	tonal impact	Maximum temperature (deg. C)	NA
		Domestic hot water:	NA
		Maximum temperature (deg. C)	NA
		Access limit	maintenance staff
		Fire risk	low: MEDIUM: high
		Other risks	NA

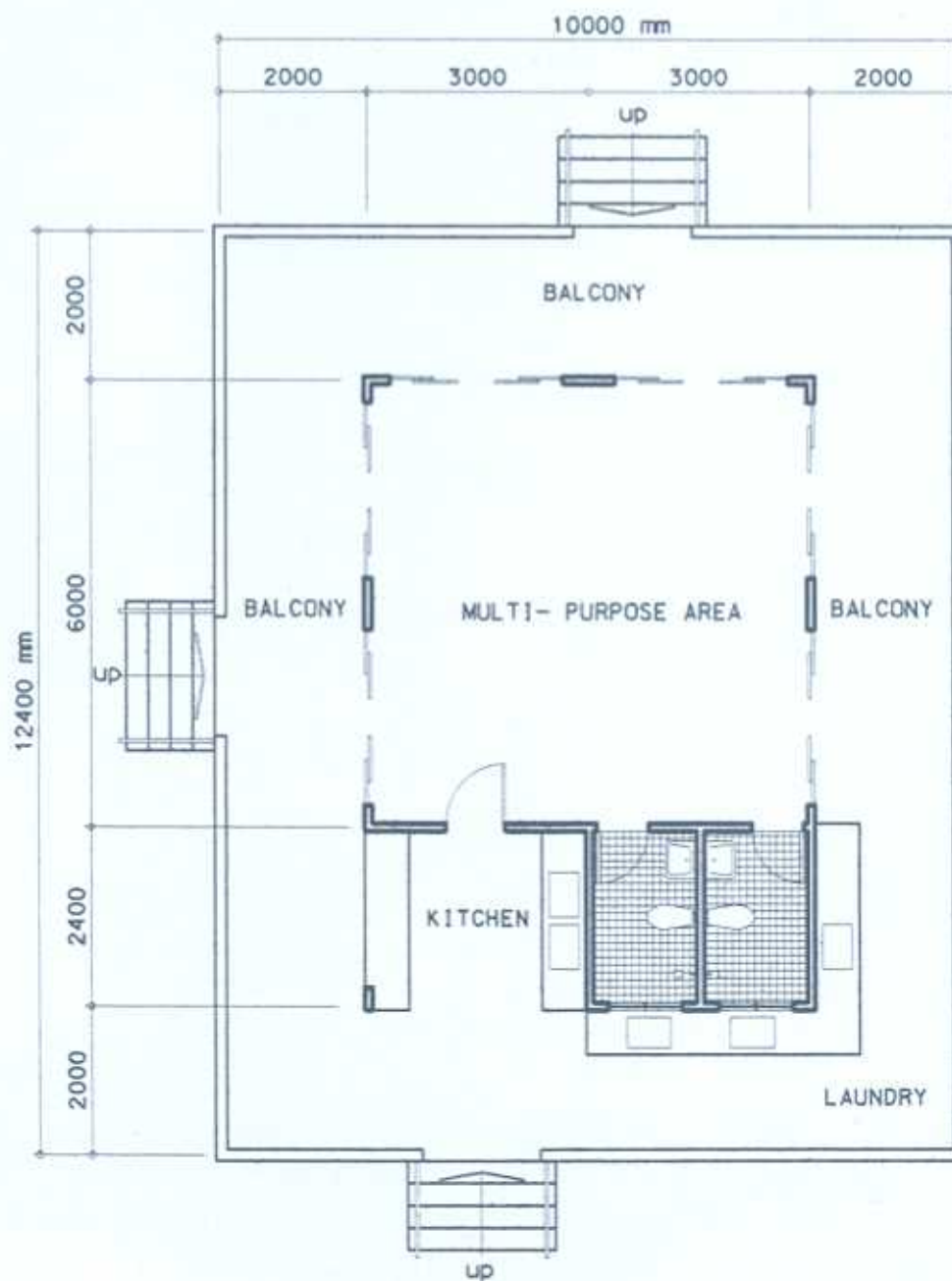




Hospital: Tertiary, 100-Bed	<b>DEPARTMENT DATA SHEET</b>	Department of Health HEALTH INFRASTRUCTURE SERVICE
Updated Reference: November 1991	Department: <b>WATCHERS' AREA</b>	Reference Sheet Number: 100B-EN-DDS03

LAYOUT PER DEPARTMENT SHOWING ROOMS AND SPACE COMPONENTS:

Scale 1:100 mts.







Hospital:  Tertiary, 100-Bed	ROOM DATA SHEET		Department of Health  HEALTH INFRASTRUCTURE SERVICE
Updated Reference: May 1992	Department: WATCHERS' AREA	Room Title: MULTI-PURPOSE AREA WITH BALCONY	Reference Sheet Number: 100B-EN-RDS14B
TECHNICAL DESIGN DATA			
ENVIRONMENTAL CONDITIONS	DESIGN DATA	ENVIRONMENTAL CONDITIONS	DESIGN DATA
AIR		LIGHTING AND VISUAL	
Outdoor air temperature (deg C)	ave. local station temp. reading	General illumination (LUX)	150
Room Temperature (deg C)	25	Night illumination (LUX)	NA
Mechanical ventilation		Task illumination (LUX)	NA
Volume (cu m /hr /person)	NA	Colour rendering	essential desirable UNNECESSARY
Velocity (m /hr)	NA	Standby light	essential desirable UNNECESSARY
Pressure		Emergency light	essential desirable UNNECESSARY
Exhaust (psi)	NA	Daylight	essential DESIRABLE unnecessary
Inlet (psi)	NA	View out	essential DESIRABLE unnecessary
%Dust filtration	NA	Privacy	essential desirable UNNECESSARY
Humidity (%RH)	NA	Black out	essential desirable UNNECESSARY
Cooling load (TR)	NA		
SOUND		SAFETY	
Acceptable sound level (db)	50	Accessible hot surface	NA
Speech privacy	essential DESIRABLE unnecessary	Maximum temperature (deg C)	NA
Quality which cannot be tolerated	tonal impact	Domestic hot water	NA
		Maximum temperature (deg C)	NA
		Access limit	watchers
		Fire risk	LOW : medium : high
		Other risks	NA

Hospital:  Tertiary, 100-Bed	<b>ROOM DATA SHEET</b>		Department of Health  HEALTH INFRASTRUCTURE SERVICE
Updated Reference: May 1992	Department: WATCHERS' AREA	Room Title: MULTI-PURPOSE AREA WITH BALCONY	Reference Sheet Number: 100B-EN-RDS14C
<b>TECHNICAL DESIGN DATA:</b>		<b>LAYOUT OF ROOM AND SPACE COMPONENTS:</b>	
<b>DIRECT SERVICES</b>	<b>DESIGN DATA</b>	Scale 1:100 mts.	
Disposal	hospital solid waste type A		
Hot water	NA		
Cold water	NA		
Drainage	NA		
Gas	NA		
Compressed air	NA		
Steam	NA		
Others			
<b>DIRECT DEMANDS ON FLOOR AND WALL</b>			
Loading	NA		
Spillage	NA		
Foot traffic	light : MEDIUM : heavy		
Wheel traffic	NA		
Impacts	NA		
Abrasion	NA		
Easy maintenance	essential/ DESIRABLE/ unnecessary	SPACE DEMANDS (Total Minimum Space Required in sq.m.) : 36.00	
Vibration free	essential/ DESIRABLE/ unnecessary	Space Components	Minimum Space Required/Component
Door sets	sliding wooden louver	Multi-purpose Area	36.00 sq.m
		Balcony	58.80 sq.m
Windows	nil	<b>REGULATIONS AND NOTES:</b>	
Internal glazing	nil		

Hospital:  Tertiary, 100-Bed	ROOM DATA SHEET		Department of Health  HEALTH INFRASTRUCTURE SERVICE
Updated Reference: May 1992	Department: WATCHERS' AREA	Room Title: KITCHEN	Reference Sheet Number: 100B-EN-RDS15A

FUNCTIONAL DESIGN REQUIREMENTS:

<p>This activity space provides facilities needed for the following activities</p> <p>a. Watchers prepare and cook their food. b. Watchers wash dishes.</p> <p>People Involved:  Watchers</p> <p>Planning Relationships:  a. Adjacent to Multi-purpose Area b. Adjacent to Toilet.</p>	EQUIPMENT AND ACCESSORY CHECKLIST	QUANTITY	REMARKS
	Tiled sink in counter	2	
	FURNITURE AND FIXTURE CHECKLIST	QUANTITY	REMARKS
	Tiled counter, 900mm high, open below.		
	ADDITIONAL EQUIPMENT AND ENGINEERING TERMINALS	QUANTITY	REMARKS
	Outlet, 15A, 2P, 240V	1	grounding type, tandem slots.

Hospital	ROOM DATA SHEET		Department of Health HEALTH INFRASTRUCTURE SERVICE
Tertiary, 100-Bed			
Updated Reference: May 1992	Department: WATCHER'S AREA	Room Title KITCHEN	Reference Sheet Number: 100B-EN-RDS15B
TECHNICAL DESIGN DATA			
ENVIRONMENTAL CONDITIONS	DESIGN DATA	ENVIRONMENTAL CONDITIONS	DESIGN DATA
AIR:		LIGHTING AND VISUAL	
Outdoor air temperature (deg. C)	ave. local station temp. reading	General illumination (LUX)	250
Room Temperature	ambient	Night illumination (LUX)	NA
Mechanical ventilation		Task illumination (LUX)	NA
Volume (cu. m /hr -person)	NA	Colour rendering	essential DESIRABLE unnecessary
Velocity (m/hr)	NA	Standby light	essential desirable UNNECESSARY
Pressure:		Emergency light	essential desirable UNNECESSARY
Exhaust (psi)	NA	Daylight	essential DESIRABLE unnecessary
Inlet (psi)	NA	View out	essential DESIRABLE unnecessary
% Dust filtration	NA	Privacy	essential desirable UNNECESSARY
Humidity (%RH)	NA	Black out	essential desirable UNNECESSARY
Cooling load (TR)	NA		
SOUND		SAFETY	
Acceptable sound level (db)	60	Accessible hot surface:	NA
Speech privacy	essential, desirable, UNNECESSARY	Maximum temperature (deg. C)	NA
Quality which cannot be tolerated	NA	Domestic hot water:	NA
		Maximum temperature (deg. C)	- NA
		Access limit	watchers
		Fire risk	low medium HIGH
		Other risks:	NA



Hospital:  Tertiary, 100-Bed	ROOM DATA SHEET		Department of Health  HEALTH INFRASTRUCTURE SERVICE
Updated Reference: May 1992	Department: WATCHERS' AREA	Room Title: KITCHEN	Reference Sheet Number: 100B-EN-RDS15C
TECHNICAL DESIGN DATA:		LAYOUT OF ROOM AND SPACE COMPONENTS:	
DIRECT SERVICES	DESIGN DATA	Scale 1:100 mts.	
Disposal	hospital solid waste type : A		
Hot water	NA		
Cold water	required at kitchen sink		
Drainage	required sink and floor.		
Gas	NA		
Compressed air	NA		
Steam	NA		
Others			
DIRECT DEMANDS ON FLOOR AND WALL			
Loading	NA		
Spillage	slight: OCCASIONAL : frequent		
Foot traffic	light : MEDIUM heavy		
Wheel traffic	NA		
Impacts	NA		
Abrasion	NA		
Easy maintenance	essential: DESIRABLE: ecessary	SPACE DEMANDS (Total Minimum Space Required in sq.m.) : 7.20	
Vibration free	essential desirable UNNECESSARY	Space Components	Minimum Space Required/Component
Door set	nil, open to circulation		
Windows	nil	REGULATIONS AND NOTES:	
Internal glazing	nil		

Hospital:  Tertiary, 100-Bed	ROOM DATA SHEET		Department of Health  HEALTH INFRASTRUCTURE SERVICE		
Updated Reference: May 1992	Department: WATCHERS' AREA	Room Title: TOILETS	Reference Sheet Number: 100B-EN-RDS16A		
<b>FUNCTIONAL DESIGN REQUIREMENTS:</b>					
<p>This activity space provides facilities needed for the following activities:</p> <ul style="list-style-type: none"> <li>a Use of toilet facilities</li> <li>b Clean-up activities.</li> </ul> <p>People Involved:</p> <p>Watchers.</p> <p>Planning Relationships</p> <ul style="list-style-type: none"> <li>a. Close to Multi-purpose Area</li> <li>b. Adjacent to Kitchen.</li> </ul>	EQUIPMENT AND ACCESSORY CHECKLIST	QUANTITY	REMARKS		
	FURNITURE AND FIXTURE CHECKLIST	QUANTITY	REMARKS		
	Lavatory Squat type toilet bowl	2 2			
			ADDITIONAL EQUIPMENT AND ENGINEERING TERMINALS	QUANTITY	REMARKS

Hospital	ROOM DATA SHEET		Department of Health HEALTH INFRASTRUCTURE SERVICE
Tertiary, 100-Bed			
Updated Reference: May 1992	Department: WATCHER'S AREA	Room Title: TOILETS	Reference Sheet Number: 100B-EN-RDS16B
TECHNICAL DESIGN DATA:			
ENVIRONMENTAL CONDITIONS	DESIGN DATA	ENVIRONMENTAL CONDITIONS	DESIGN DATA
AIR		LIGHTING AND VISUAL	
Outdoor air temperature (deg. C)	ave. local station temp. reading	General illumination (LUX)	250
Room Temperature	ambient	Night illumination (LUX)	NA
Mechanical ventilation		Task illumination (LUX)	NA
Volume (cu m /hr /person)	NA	Colour rendering	essential desirable UNNECESSARY
Velocity (m/hr)	NA	Standby light	essential desirable UNNECESSARY
Pressure		Emergency light	essential desirable UNNECESSARY
Exhaust (psi)	NA	Daylight	essential DESIRABLE unnecessary
Inlet (psi)	NA	View out	essential DESIRABLE unnecessary
% Dust filtration	NA	Privacy	essential DESIRABLE unnecessary
Humidity (%RH)	NA	Black out	essential desirable UNNECESSARY
Cooling load (TR)	NA		
SOUND		SAFETY	
Acceptable sound level (db)	60	Accessible hot surface	NA
Speech privacy	essential: desirable: UNNECESSARY	Maximum temperature (deg. C)	NA
Quality which cannot be tolerated	NA	Domestic hot water	NA
		Maximum temperature (deg. C)	NA
		Access limit	watchers
		Fire risk	LOW medium high
		Other risks	NA

Hospital:  Tertiary, 100-Bed	ROOM DATA SHEET		Department of Health  HEALTH INFRASTRUCTURE SERVICE
Updated Reference: May 1992	Department: WATCHERS' AREA	Room Title: TOILETS	Reference Sheet Number: 100B-EN-RDS16C
TECHNICAL DESIGN DATA:		LAYOUT OF ROOM AND SPACE COMPONENTS:	
DIRECT SERVICES	DESIGN DATA	Scale 1:100 mts.	
Disposal	hospital solid waste type A		
Hot water	NA		
Cold water	required at toilet fixtures		
Drainage	required at toilet fixtures & floor		
Gas	NA		
Compressed air	NA		
Steam	NA		
Others			
DIRECT DEMANDS ON FLOOR AND WALL			
Loading	NA		
Spillage	Slight - occasional - FREQUENT		
Foot traffic	light - MEDIUM - heavy		
Wheel traffic	NA		
Impacts	NA		
Abrasion	NA		
Easy maintenance	essential - DESIRABLE - unnecessary	SPACE DEMANDS (Total Minimum Space Required in sq.m.): 7.20	
Vibration free	essential - desirable - UNNECESSARY	Space Components	Minimum Space Required/Component
Door set	ordinary access door	Male Toilet & Bath	3.60 sq.m.
		Female Toilet & Bath	3.60 sq.m.
Windows	clear	REGULATIONS AND NOTES:	
Internal glazing	nil		





Hospital:  Tertiary, 100-Bed	ROOM DATA SHEET		Department of Health  HEALTH INFRASTRUCTURE SERVICE
Updated Reference: May 1992	Department: WATCHERS' AREA	Room Title: LAUNDRY AREA	Reference Sheet Number: 100B-EN-RDS17B
TECHNICAL DESIGN DATA:			
ENVIRONMENTAL CONDITIONS	DESIGN DATA	ENVIRONMENTAL CONDITIONS	DESIGN DATA
AIR		LIGHTING AND VISUAL	
Outdoor air temperature (deg.C)	ave. local station temp. reading	General illumination (LUX)	250
Room Temperature (deg. C)	ambient	Night illumination (LUX)	NA
Mechanical ventilation		Task illumination (LUX)	NA
Volume (cu m./hr.-person)	NA	Colour rendering	essential : DESIRABLE : unnecessary
Velocity (m./hr.)	NA	Standby light	essential : desirable : UNNECESSARY
Pressure		Emergency light	essential : desirable : UNNECESSARY
Exhaust (psi)	NA	Daylight	ESSENTIAL : desirable : unnecessary
Inlet (psi)	NA	View out	essential : DESIRABLE : unnecessary
%Dust filtration	NA	Privacy	essential : desirable : UNNECESSARY
Humidity (%RH)	NA	Black out	essential : desirable : UNNECESSARY
Cooling load (TR)	NA		
SOUND			
Acceptable sound level (db)	60	SAFETY	
Speech privacy	essential : desirable : UNNECESSARY	Accessible hot surface:	NA
Quality which cannot be tolerated	NA	Maximum temperature (deg. C)	NA
		Domestic hot water:	NA
		Maximum temperature (deg. C)	NA
		Access limit:	watchers
		Fire risk	LOW : medium : high
		Other risks	NA

Hospital: Tertiary, 100-Bed	ROOM DATA SHEET		Department of Health HEALTH INFRASTRUCTURE SERVICE		
Updated Reference: May 1992	Department: WATCHERS' AREA	Room Title: LAUNDRY AREA	Reference Sheet Number: 100B-EN-RDS17C		
TECHNICAL DESIGN DATA:		LAYOUT OF ROOM AND SPACE COMPONENTS:			
DIRECT SERVICES	DESIGN DATA	Scale 1:100 mts.			
Disposal	hospital solid waste type: A				
Hot water	NA				
Cold water	required at sink				
Drainage	required at sink and floor				
Gas	NA				
Compressed air	NA				
Steam	NA				
Others					
DIRECT DEMANDS ON FLOOR AND WALL				<p><b>Key</b></p> <p>1. Tiled counter, 900mm high, open below, with three built-in tiled sink.</p> <p>2. Floor drain</p> <p>3. Portion of balcony</p>	
Loading	NA			SPACE DEMANDS (Total Minimum Space Required in sq.m.): 14.80	
Spillage	slight: occasional: FREQUENT	Space Components	Minimum Space Required/Component		
Foot traffic	light: MEDIUM: heavy				
Wheel traffic	NA				
Impacts	NA				
Abrasion	NA				
Easy maintenance	ESSENTIAL: desirable: unnecessary	REGULATIONS AND NOTES			
Vibration free	essential: desirable: UNNECESSARY				
Door set	nil, open to circulation				
Windows					
Internal glazing	nil				