

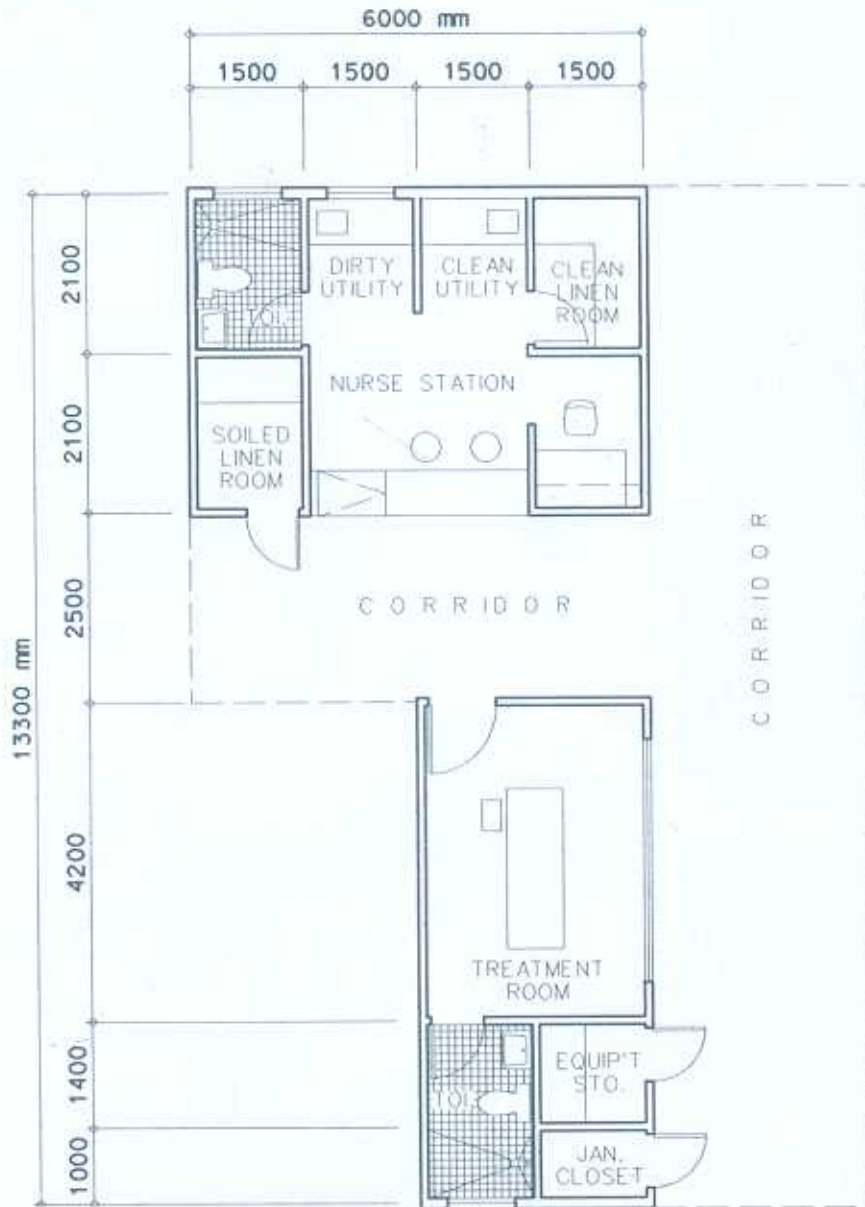
**VOLUME 4 SCHEMATIC PLANS AND TECHNICAL
REQUIREMENTS OF A 100-BED HOSPITAL**

4.4 NURSING Service Facility

Hospital: Tertiary, 100-Bed	DEPARTMENT DATA SHEET	Department of Health HEALTH INFRASTRUCTURE SERVICE
Updated Reference: May 1991	Department: WARD NURSE STATION AND SERVICE GROUP	Reference Sheet Number: 100B-NU-DDS01

LAYOUT PER DEPARTMENT SHOWING ROOMS AND SPACE COMPONENTS:

Scale 1:100 mts.



Hospital: Tertiary, 100-Bed	ROOM DATA SHEET		Department of Health HEALTH INFRASTRUCTURE SERVICE
Updated Reference: May 1992	Department: INPATIENT NURSING WARDS	Room Title: NURSE STATION	Reference Sheet Number: 100B-NU-RDS01A
FUNCTIONAL DESIGN REQUIREMENTS:			
<p>This activity space provides facilities needed for the following activities:</p> <ul style="list-style-type: none"> a Nurse makes plan of her activities and determine her priority activities. b Nurse makes proper inventory of resources, i.e. supplies, drugs, etc. to determine requisitions to be made. c Nurse prepares for admission of a patient. d Nurse enters name of patient in the admission book, ward directory & diet work. e Nurse makes phone calls to coordinate with other units of the hospital. f Nurse entertains queries from visitors of patient. g Nurse records and reports patient care activities, observations made. <p>People Involved:</p> <ul style="list-style-type: none"> 1 x Chief Nurse 2 x Staff Nurse 1 x Nursing Attendant <p>Planning Relationships:</p> <ul style="list-style-type: none"> a Close to Nursing Wards. b Adjacent to Utility Area and Linen Rooms. c Close to Treatment Room. 	EQUIPMENT AND ACCESSORY CHECKLIST	QUANTITY	REMARKS
	FURNITURE AND FIXTURE CHECKLIST	QUANTITY	REMARKS
	Counter, 900mm high, with 300mm deep shelves and cabinets below Bulletin board, 600x600 Chair, rack Stool Chair, upright, stacking Desk, 750x1200 Wall hung cabinet, 300mm deep Lavatory Water closet	1 1 2 1 1	
	ADDITIONAL EQUIPMENT AND ENGINEERING TERMINALS	QUANTITY	REMARKS
Outlet, telephone Outlet, 10A, 2P, 240V, duplex Smoke detector Outlet, intercom	1 2 1 1	grounding type, parallel slots	

Hospital: Tertiary, 100-Bed	ROOM DATA SHEET		Department of Health HEALTH INFRASTRUCTURE SERVICE
Updated Reference: May 1992	Department: INPATIENT NURSING WARDS	Room Title: NURSE' STATION	Reference Sheet Number: 100B-NU-RDS01B
TECHNICAL DESIGN DATA:			
ENVIRONMENTAL CONDITIONS	DESIGN DATA	ENVIRONMENTAL CONDITIONS	DESIGN DATA
AIR		LIGHTING AND VISUAL	
Outdoor air temperature (deg.C)	ave. local station temp. reading	General illumination (LUX)	750
Room Temperature (deg. C)	25	Night illumination (LUX)	NA
Mechanical ventilation		Task illumination (LUX)	NA
Volume (cu.m./hr.-person)	12.75	Colour rendering	essential : DESIRABLE : unnecessary
Velocity (m./hr.)	900	Standby light	ESSENTIAL : desirable : unnecessary
Pressure:		Emergency light	ESSENTIAL : desirable : unnecessary
Exhaust (psi)	NA	Daylight	essential : desirable : UNNECESSARY
Inlet (psi)	NA	View out	essential : DESIRABLE : unnecessary
%Dust filtration	93% - 99% @ 1 micron	Privacy	essential : desirable : UNNECESSARY
Humidity (%RH)	50	Black out	essential : desirable : UNNECESSARY
Cooling load (TR)	1		
SOUND		SAFETY	
Acceptable sound level (db)	50	Accessible hot surface:	NA
Speech privacy	essential: desirable: UNNECESSARY	Maximum temperature (deg. C)	NA
Quality which cannot be tolerated	tonal impact	Domestic hot water:	at medical sink
		Maximum temperature (deg. C)	70
		Access limit	at medicine staff
		Fire risk	LOW : medium : high
		Other risks	NA

Hospital: Tertiary, 100-Bed	ROOM DATA SHEET		Department of Health HEALTH INFRASTRUCTURE SERVICE												
Updated Reference: May 1992	Department: INPATIENT NURSING WARDS	Room Title: NURSE STATION	Reference Sheet Number: 100B-NU-RDS01C												
TECHNICAL DESIGN DATA:		LAYOUT OF ROOM AND SPACE COMPONENTS:													
DIRECT SERVICES	DESIGN DATA	Scale 1:100 mts.													
Disposal	hospital solid waste type: A,E,F														
Hot water	required at sink														
Cold water	required at sink & toilet fixtures														
Drainage	req'd at sink, toi, fixtures & flr.														
Gas	NA														
Compressed air	NA														
Steam	NA														
Others															
DIRECT DEMANDS ON FLOOR AND WALL															
Loading	NA														
Spillage	SLIGHT :occasional :frequent														
Foot traffic	light : MEDIUM : heavy														
Wheel traffic	NA														
Impacts	NA														
Abrasion	NA														
Easy maintenance	ESSENTIAL: desirable: unnecessary														
Vibration free	essential: DESIRABLE: unnecessary														
Door sets	nil, open to circulation														
Windows	nil														
Internal glazing	nil														
		<p>Key</p> <table border="0"> <tr> <td>1 Supervising Nurse's cubicle</td> <td>6 Bulletin board, 600x600</td> </tr> <tr> <td>2 Counter, 900mm high, with 300mm deep shelves and cabinets below</td> <td>7 Stool</td> </tr> <tr> <td>3 Desk, 750x1200</td> <td>8 Chart rack</td> </tr> <tr> <td>4 Wall hung cabinet, 300mm deep</td> <td>9 Dirty utility area</td> </tr> <tr> <td>5 Chair, upright, stacking</td> <td>10 Clean utility area</td> </tr> <tr> <td></td> <td>11 Work Area</td> </tr> </table>		1 Supervising Nurse's cubicle	6 Bulletin board, 600x600	2 Counter, 900mm high, with 300mm deep shelves and cabinets below	7 Stool	3 Desk, 750x1200	8 Chart rack	4 Wall hung cabinet, 300mm deep	9 Dirty utility area	5 Chair, upright, stacking	10 Clean utility area		11 Work Area
1 Supervising Nurse's cubicle	6 Bulletin board, 600x600														
2 Counter, 900mm high, with 300mm deep shelves and cabinets below	7 Stool														
3 Desk, 750x1200	8 Chart rack														
4 Wall hung cabinet, 300mm deep	9 Dirty utility area														
5 Chair, upright, stacking	10 Clean utility area														
	11 Work Area														
		SPACE DEMANDS (Total Minimum Space Required in sq.m.): 12.60													
		Space Components	Minimum Space Required/Component												
		Work Area	9.45 sq.m.												
		Toilet	3.15 sq.m.												
		REGULATIONS AND NOTES:													

Hospital: Tertiary, 100-Bed	ROOM DATA SHEET		Department of Health HEALTH INFRASTRUCTURE SERVICE
Updated Reference: May 1992	Department: INPATIENT NURSING WARDS	Room Title: UTILITY AREA	Reference Sheet Number: 100B-NU-RDS02A

FUNCTIONAL DESIGN REQUIREMENTS:

<p>This activity space provides facilities needed for the following activities:</p> <ul style="list-style-type: none"> a. Nurse performs clean-up related activities in order to maintain order and hygiene in the Nurse Station. b. Nurse stores and retrieves ward supplies. c. Nurse maintains hospital equipment utilized in the ward area. <p>People Involved:</p> <ul style="list-style-type: none"> 1 x Nurse 1 x Nursing Attendant <p>Planning Relationships:</p> <ul style="list-style-type: none"> a. Adjacent to Nurse Station. 	EQUIPMENT AND ACCESSORY CHECKLIST	QUANTITY	REMARKS
	Sink in counter with gooseneck spout and knee or elbow control	1	
	Medicine sink in counter with gooseneck spout	1	
	FURNITURE AND FIXTURE CHECKLIST	QUANTITY	REMARKS
	Counter, 900mm high, with cabinets below Wall hung cabinet, 300mm deep Locked wall cabinet with inner locker, narcotic compartment and inside light	1	
	ADDITIONAL EQUIPMENT AND ENGINEERING TERMINALS	QUANTITY	REMARKS
Outlet, 10A, 2P, 240V	2	grounding type, parallel slots	
Outlet, 15A, 2P, 240V, single	1	grounding type tandem slots	

Hospital: Tertiary, 100-Bed	ROOM DATA SHEET		Department of Health HEALTH INFRASTRUCTURE SERVICE
Updated Reference: May 1992	Department: INPATIENT NURSING WARDS	Room Title: UTILITY AREA	Reference Sheet Number: 100B-NU-RDS02B
TECHNICAL DESIGN DATA:			
ENVIRONMENTAL CONDITIONS	DESIGN DATA	ENVIRONMENTAL CONDITIONS	DESIGN DATA
AIR		LIGHTING AND VISUAL	
Outdoor air temperature (deg.C)	ave. local station temp. reading	General illumination (LUX)	500
Room Temperature (deg. C)	atmospheric	Night illumination (LUX)	NA
Mechanical ventilation		Task illumination (LUX)	NA
Volume (cu.m./hr.-person)	NA	Colour rendering	essential : DESIRABLE : unnecessary
Velocity (m./hr.)	NA	Standby light	essential : DESIRABLE : unnecessary
Pressure:		Emergency light	essential : DESIRABLE : unnecessary
Exhaust (psi)	NA	Daylight	essential : desirable : UNNECESSARY
Inlet (psi)	NA	View out	essential : DESIRABLE : unnecessary
%Dust filtration	NA	Privacy	essential : DESIRABLE : unnecessary
Humidity (%RH)	NA	Black out	essential : desirable : UNNECESSARY
Cooling load (TR)	NA		
SOUND			
Acceptable sound level (db)	50	SAFETY	
Speech privacy	essential: DESIRABLE: unnecessary	Accessible hot surface:	NA
Quality which cannot be tolerated	tonal impact	Maximum temperature (deg. C)	NA
		Domestic hot water:	at medicine sink
		Maximum temperature (deg. C)	70
		Access limit	nursing staff
		Fire risk	LOW : medium : high
		Other risks	NA

Hospital: Tertiary, 100-Bed	ROOM DATA SHEET		Department of Health HEALTH INFRASTRUCTURE SERVICE										
Updated Reference: May 1992	Department: INPATIENT NURSING WARDS	Room Title: UTILITY AREA	Reference Sheet Number: 100B-NU-RDS02C										
TECHNICAL DESIGN DATA:		LAYOUT OF ROOM AND SPACE COMPONENTS:											
DIRECT SERVICES	DESIGN DATA	Scale 1:100 mts.											
Disposal	hospital solid waste type :A,E,F												
Hot water	required at sink												
Cold water	required at sink												
Drainage	provide at sink												
Gas	NA												
Compressed air	NA												
Steam	NA												
Others													
DIRECT DEMANDS ON FLOOR AND WALL				<p>Key</p> <table border="0"> <tr> <td>1 Medicine sink in counter with gooseneck spout</td> <td>4 Sink in counter with gooseneck spout and knee or elbow control</td> </tr> <tr> <td>2 Locked wall cabinet with inner locker narcotic</td> <td>5 Wall hung cabinets, 300mm deep compartment and inside light</td> </tr> <tr> <td>3 Counter, 900mm high, with cabinets below</td> <td>6 Dirty utility area</td> </tr> <tr> <td></td> <td>7 Clean utility area</td> </tr> </table>		1 Medicine sink in counter with gooseneck spout	4 Sink in counter with gooseneck spout and knee or elbow control	2 Locked wall cabinet with inner locker narcotic	5 Wall hung cabinets, 300mm deep compartment and inside light	3 Counter, 900mm high, with cabinets below	6 Dirty utility area		7 Clean utility area
1 Medicine sink in counter with gooseneck spout	4 Sink in counter with gooseneck spout and knee or elbow control												
2 Locked wall cabinet with inner locker narcotic	5 Wall hung cabinets, 300mm deep compartment and inside light												
3 Counter, 900mm high, with cabinets below	6 Dirty utility area												
	7 Clean utility area												
Loading	NA	SPACE DEMANDS (Total Minimum Space Required in sq.m.): 6.30											
Spillage	slight : OCCASIONAL : frequent	Space Components	Minimum Space Required/Component										
Foot traffic	light : MEDIUM : heavy	Clean Utility Area	3.15 sq.m.										
Wheel traffic	NA	Dirty Utility Area	3.15 sq.m.										
Impacts	NA	REGULATIONS AND NOTES:											
Abrasion	NA												
Easy maintenance	ESSENTIAL: desirable: unnecessary												
Vibration free	ESSENTIAL: desirable: unnecessary												
Door sets	nil, open to circulation												
Windows	clear, solar control												
Internal glazing	nil												

Hospital: Tertiary, 100-Bed	ROOM DATA SHEET		Department of Health HEALTH INFRASTRUCTURE SERVICE	
Updated Reference: May 1992	Department: INPATIENT NURSING WARDS	Room Title: LINEN ROOMS	Reference Sheet Number: 100B-NU-RDS03A	
FUNCTIONAL DESIGN REQUIREMENTS:				
<p>This activity space provides facilities needed for the following activities:</p> <p>Clean Linen Room:</p> <ul style="list-style-type: none"> a. Storage of Clean Linen. b. Issuance of Clean Linen. <p>Soiled Linen Room:</p> <ul style="list-style-type: none"> a. Transit storage of soiled linen. <p>People Involved:</p> <ul style="list-style-type: none"> 1 x Nursing 1 x Nursing Attendant <p>Planning Relationships:</p> <ul style="list-style-type: none"> a. Adjacent to Nurse Station of Inpatient Nursing Wards. b. Close to Inpatient Nursing Wards. 	EQUIPMENT AND ACCESSORY CHECKLIST	QUANTITY	REMARKS	
	Linen hamper Exhaust fan Door closer	2 1 1		at Soiled Linen Room at Soiled Linen Room
	FURNITURE AND FIXTURE CHECKLIST	QUANTITY	REMARKS	
	Linen closet, 600mm deep			
	ADDITIONAL EQUIPMENT AND ENGINEERING TERMINALS	QUANTITY	REMARKS	

Hospital: Tertiary, 100-Bed	ROOM DATA SHEET		Department of Health HEALTH INFRASTRUCTURE SERVICE
Updated Reference: May 1992	Department: INPATIENT NURSING WARDS	Room Title: LINEN ROOMS	Reference Sheet Number: 100B-NU-RDS3B
TECHNICAL DESIGN DATA:			
ENVIRONMENTAL CONDITIONS	DESIGN DATA	ENVIRONMENTAL CONDITIONS	DESIGN DATA
AIR		LIGHTING AND VISUAL	
Outdoor air temperature (deg C)	ave. local station temp. reading	General illumination (LUX)	250
Room Temperature (deg. C)	atmospheric	Night illumination (LUX)	NA
Mechanical ventilation		Task illumination (LUX)	NA
Volume (cu.m./hr.-person)	NA	Colour rendering	essential : DESIRABLE : unnecessary
Velocity (m./hr.)	NA	Standby light	essential : DESIRABLE : unnecessary
Pressure		Emergency light	essential : desirable : UNNECESSARY
Exhaust (psi)	NA	Daylight	essential : desirable : UNNECESSARY
Inlet (psi)	NA	View out	essential : DESIRABLE : unnecessary
%Dust filtration	NA	Privacy	essential : desirable : UNNECESSARY
Humidity (%RH)	NA	Black out	essential : desirable : UNNECESSARY
Cooling load (TR)	NA		
SOUND			
Acceptable sound level (db)	50	SAFETY	
Speech privacy	essential : desirable : UNNECESSARY	Accessible hot surface:	NA
Quality which cannot be tolerated	tonal impact	Maximum temperature (deg. C)	NA
		Domestic hot water:	NA
		Maximum temperature (deg. C)	NA
		Access limit	nursing staff
		Fire risk	LOW : medium : high
		Other risks	NA

Hospital: Tertiary, 100-Bed	ROOM DATA SHEET		Department of Health HEALTH INFRASTRUCTURE SERVICE								
Updated Reference: May 1992	Department: INPATIENT NURSING WARDS	Room Title: LINEN ROOMS	Reference Sheet Number: 100B-NU-RDS03C								
TECHNICAL DESIGN DATA:		LAYOUT OF ROOM AND SPACE COMPONENTS:									
DIRECT SERVICES	DESIGN DATA	Scale 1:100 mts.									
Disposal	NA										
Hot water	NA										
Cold water	NA										
Drainage	NA										
Gas	NA										
Compressed air	NA										
Steam	NA										
Others											
DIRECT DEMANDS ON FLOOR AND WALL				<p>Key</p> <p>1 Linen closet, 800mm deep 3 Ceiling mounted exhaust fan</p> <p>2 Laundry hamper 4 Door with door closer</p> <p>SPACE DEMANDS (Total Minimum Space Required in sq.m.): 6.30</p> <table border="1"> <thead> <tr> <th>Space Components</th> <th>Minimum Space Required/Component</th> </tr> </thead> <tbody> <tr> <td>Clean Linen Room</td> <td>3.15 sq.m.</td> </tr> <tr> <td>Soiled Linen Room</td> <td>3.15 sq.m.</td> </tr> </tbody> </table>		Space Components	Minimum Space Required/Component	Clean Linen Room	3.15 sq.m.	Soiled Linen Room	3.15 sq.m.
Space Components	Minimum Space Required/Component										
Clean Linen Room	3.15 sq.m.										
Soiled Linen Room	3.15 sq.m.										
Loading	light : MEDIUM : heavy										
Spillage	NA										
Foot traffic	light : MEDIUM : heavy										
Wheel traffic	NA										
Impacts	NA										
Abrasion	NA										
Easy maintenance	ESSENTIAL: desirable: unnecessary										
Vibration free	essential: DESIRABLE : unnecessary										
Door sets	ordinary access door										
Windows	nil	REGULATIONS AND NOTES:									
Internal glazing	nil										

Hospital: Tertiary, 100-Bed	ROOM DATA SHEET		Department of Health HEALTH INFRASTRUCTURE SERVICE
Updated Reference: May 1992	Department INPATIENT NURSING WARDS	Room Title: TREATMENT ROOM	Reference Sheet Number: 100B-NU-RDS04A
FUNCTIONAL DESIGN REQUIREMENTS:			
<p>This activity space provides facilities needed for the following activities:</p> <ul style="list-style-type: none"> a. Patient arrives on foot, in wheelchair or on a stretcher trolley from ward b. Transfer of patient from wheelchair or stretcher trolley to examining table. c. Physician or nurse administers necessary medical, surgical and first-aid treatment to patient. <p>People Involved:</p> <ul style="list-style-type: none"> 1 x Physician 1 x Nurse 1 x Nursing Attendant 1 x Patient <p>Planning Relationships:</p> <ul style="list-style-type: none"> a. Adjacent to Nurse Station. b. Close to Wards. 	EQUIPMENT AND ACCESSORY CHECKLIST	QUANTITY	REMARKS
	Instrument and scrub sink with gooseneck spout and spray and knee control	1	
	Examining light	2	
	Examining table	1	
Kick bucket	1		
View box	1		
Waste receptacle	1		
	FURNITURE AND FIXTURE CHECKLIST	QUANTITY	REMARKS
Instrument table 600x900	1		
Mayo table	1		
Footstool	1		
Irrigator stand	1		
Dressing cart			
Adjustable stool			
Counter, 900mm high with cabinets below			
Wall cabinet			
	ADDITIONAL EQUIPMENT AND ENGINEERING TERMINALS	QUANTITY	REMARKS
Rail, curtain, window	1		
Outlet, 10A, 2P, 240V, duplex	4	grounding type, parallel slots	
Outlet, 15A, 2P, 240V	1	grounding type, tandem slots	
Nurse call station, emergency	1		

Hospital Tertiary, 100-Bed	ROOM DATA SHEET		Department of Health HEALTH INFRASTRUCTURE SERVICE
Updated Reference: May 1992	Department: INPATIENT NURSING WARDS	Room Title: TREATMENT ROOM	Reference Sheet Number: 100B-NU-RDS4B
TECHNICAL DESIGN DATA:			
ENVIRONMENTAL CONDITIONS	DESIGN DATA	ENVIRONMENTAL CONDITIONS	DESIGN DATA
AIR		LIGHTING AND VISUAL	
Outdoor air temperature (deg.C)	ave. local station temp. reading	General illumination (LUX)	250-500
Room Temperature (deg. C)	25	Night illumination (LUX)	NA
Mechanical ventilation		Task illumination (LUX)	NA
Volume (cu.m./hr.-person)	12.75	Colour rendering	ESSENTIAL : desirable : unnecessary
Velocity (m./hr.)	900	Standby light	ESSENTIAL : desirable : unnecessary
Pressure:		Emergency light	ESSENTIAL : desirable : unnecessary
Exhaust (psi)	NA	Daylight	essential : DESIRABLE : unnecessary
Inlet (psi)	NA	View out	essential : DESIRABLE : unnecessary
%Dust filtration	93% - 99% @ 1micron	Privacy	essential : DESIRABLE : unnecessary
Humidity (%RH)	50	Black out	essential : desirable : UNNECESSARY
Cooling load (TR)	1		
SOUND			
Acceptable sound level (db)	50	SAFETY	
Speech privacy	essential: DESIRABLE: unnecessary	Accessible hot surface:	NA
Quality which cannot be tolerated	tonal impact	Maximum temperature (deg. C)	NA
		Domestic hot water:	at sink and toilet lavatory
		Maximum temperature (deg. C)	70
		Access limit	medical staff & patient
		Fire risk	LOW : medium : high
		Other risks	NA

Hospital: Tertiary, 100-Bed	ROOM DATA SHEET		Department of Health HEALTH INFRASTRUCTURE SERVICE		
Updated Reference: May 1992	Department: INPATIENT NURSING WARDS	Room Title: TREATMENT ROOM	Reference Sheet Number: 100B-NU-RDS04C		
TECHNICAL DESIGN DATA:		LAYOUT OF ROOM AND SPACE COMPONENTS:			
DIRECT SERVICES	DESIGN DATA	Scale 1:100 mts.			
Disposal	hospital solid waste type A,B,E,F				
Hot water	required at sink & toilet lavatory				
Cold water	required at sink & toilet fixtures				
Drainage	provide floor drain at toilet				
Gas	provide gas and suction outlet				
Compressed air	NA				
Steam	NA				
Others	1 nurses' call (to Nurse Station)				
DIRECT DEMANDS ON FLOOR AND WALL				Key	
Loading	NA			1 Waste receptacle	8 Irrigator stand
Spillage	SLIGHT : occasional : frequent	2 Combination scrub sink and instrument sink w/gooseneck spout & spray & knee control	9 View box		
Foot traffic	light : MEDIUM : heavy	3 Counter, 900mm high with cabinets below	10 Dressing cart		
Wheel traffic	light : MEDIUM : heavy	4 Wall cabinet	11 Examining light		
Impacts	NA	5 Bulletin board	12 Mayo table		
Abrasion	NA	6 Nurses call station	13 Instrument table, 600x900		
Easy maintenance	ESSENTIAL: desirable: unnecessary	7 Kick bucket	14 Adjustable stool		
Vibration free	ESSENTIAL: desirable: unnecessary		15 Examining table		
Door sets	examining table, wheelchair stretcher access		16 Footstool		
Windows	clear, solar control, privacy control		17 Intercom, wall mounted		
Internal glazing	nil				
		SPACE DEMANDS (Total Minimum Space Required in sq.m.): 15.96			
		Space Components	Minimum Space Required/Component		
		Treatment Room	12.60 sq.m.		
		Toilet	3.36 sq.m.		
		REGULATIONS AND NOTES:			
		Provide light proof shades.			

Hospital: Tertiary, 100-Bed	ROOM DATA SHEET		Department of Health HEALTH INFRASTRUCTURE SERVICE
Updated Reference: May 1992	Department: INPATIENT NURSING WARDS	Room Title: EQUIPMENT STORAGE	Reference Sheet Number: 100B-NU-RDS05A

FUNCTIONAL DESIGN REQUIREMENTS:

<p>This activity space provides facilities needed for the following activities:</p> <ul style="list-style-type: none"> a. Storage of hospital equipment not in use, e.g. oxygen tank, etc. b. Storage of cleaning of maintenance equipment <p>People Involved:</p> <ul style="list-style-type: none"> 1 x Nursing Attendant 1 x Hospital Maintenance Staff <p>Planning Relationships:</p> <ul style="list-style-type: none"> a. Close to Treatment Room. b. Close to Nurse Station. 	EQUIPMENT AND ACCESSORY CHECKLIST	QUANTITY	REMARKS
	FURNITURE AND FIXTURE CHECKLIST	QUANTITY	REMARKS
	Open shelving		
	ADDITIONAL EQUIPMENT AND ENGINEERING TERMINALS	QUANTITY	REMARKS

Hospital Tertiary, 100-Bed	ROOM DATA SHEET		Department of Health HEALTH INFRASTRUCTURE SERVICE
Updated Reference: May 1992	Department: INPATIENT NURSING WARDS	Room Title: EQUIPMENT STORAGE	Reference Sheet Number: 100B-NU-RDS05B
TECHNICAL DESIGN DATA:			
ENVIRONMENTAL CONDITIONS	DESIGN DATA	ENVIRONMENTAL CONDITIONS	DESIGN DATA
AIR		LIGHTING AND VISUAL	
Outdoor air temperature (deg. C)	ave. local station temp. reading	General illumination (LUX)	:250
Room Temperature	atmospheric	Night illumination (LUX)	NA
Mechanical ventilation		Task illumination (LUX)	NA
Volume (cu.m./hr.-person)	NA	Colour rendering	essential: DESIRABLE: unnecessary
Velocity (m.hr.)	NA	Standby light	essential: DESIRABLE: unnecessary
Pressure:		Emergency light	essential: desirable: UNNECESSARY
Exhaust (psi)	NA	Daylight	essential: desirable: UNNECESSARY
Inlet (psi)	NA	View out	essential: desirable: UNNECESSARY
% Dust filtration	NA	Privacy	essential: desirable: UNNECESSARY
Humidity (%RH)	NA	Black out	essential: desirable: UNNECESSARY
Cooling load (TR)	NA		
SOUND		SAFETY	
Acceptable sound level (db)	60	Accessible hot surface:	NA
Speech privacy	essential: desirable: UNNECESSARY	Maximum temperature (deg. C)	NA
Quality which cannot be tolerated	NA	Domestic hot water:	NA
		Maximum temperature (deg. C)	NA
		Access limit	nursing staff
		Fire risk	low : MEDIUM : high
		Other risks	NA

Hospital: Tertiary, 100-Bed	ROOM DATA SHEET		Department of Health HEALTH INFRASTRUCTURE SERVICE		
Updated Reference: May 1992	Department: INPATIENT NURSING WARDS	Room Title: EQUIPMENT STORAGE	Reference Sheet Number: 100B-NU-RDS05C		
TECHNICAL DESIGN DATA:		LAYOUT OF ROOM AND SPACE COMPONENTS:			
DIRECT SERVICES	DESIGN DATA	Scale 1:100 mts.			
Disposal	NA				
Hot water	NA				
Cold water	NA				
Drainage	NA				
Gas	NA				
Compressed air	NA				
Steam	NA				
Others	NA				
DIRECT DEMANDS ON FLOOR AND WALL				<p>Key</p> <p>1 Open shelving, 600mm deep</p> <p>2 Janitor's closet</p>	
Loading	light : MEDIUM : heavy				
Spillage	NA				
Foot traffic	LIGHT : medium : heavy				
Wheel traffic	NA				
Impacts	light : MEDIUM : heavy				
Abrasion	LIGHT : medium : heavy				
SPACE DEMANDS (Total Minimum Space Required in sq.m.): 3.84					
Easy maintenance	essential: DESIRABLE: unnecessary	Space Components	Minimum Space Required/Component		
Vibration free	essential: DESIRABLE: unnecessary	Equipment Storage	2.40 sq.m.		
Door sets	ordinary access door	Janitor's Closet	1.44 sq.m.		
Windows	nil	REGULATIONS AND NOTES:			
Internal glazing	nil				

Hospital: Tertiary, 100-Bed	ROOM DATA SHEET		Department of Health HEALTH INFRASTRUCTURE SERVICE
Updated Reference: May 1992	Department: INPATIENT NURSING WARDS	Room Title: TYPICAL 2-BED WARD	Reference Sheet Number 100B-NU-RDS06A

FUNCTIONAL DESIGN REQUIREMENTS:

<p>This activity space provides facilities needed for the following activities:</p> <ul style="list-style-type: none"> a. Patient may arrive on foot, in a wheelchair or on a stretcher trolley. b. Transfer of patient to a hospital bed from a wheelchair or a stretcher trolley and vice versa. c. Patient undresses/dresses in the vicinity of hospital bed, with or without assistance. d. Patient takes meals in bed or in sitting area. e. Patient receives visitors. f. Patient stores clothing and other personal belongings. g. Patient requires privacy. h. Use of toilet and bath. i. Use of monitoring/diagnostic equipment. j. Physicians and nurse check on patient. k. Hand washing and other clean-up activities. <p>People Involved:</p> <ul style="list-style-type: none"> 2 x Patients 2 x Visitors 1 x Resident Physician 1 x Nurse or Nursing Aide <p>Planning Relationships:</p> <ul style="list-style-type: none"> a. Close to Nurse Station. b. Distant to Outpatient Department. c. Close to Medical/Surgical Services. <p>This activity space provides facilities needed for the delivery of General Patient Care.</p>	EQUIPMENT AND ACCESSORY CHECKLIST	QUANTITY	REMARKS	
	FURNITURE AND FIXTURE CHECKLIST	QUANTITY	REMARKS	
	Adjustable hospital bed Overbed table Chair, upright stacking Footstool Bedside cabinet, 500x600	2 2 2 2 2		
	ADDITIONAL EQUIPMENT AND ENGINEERING TERMINALS	QUANTITY	REMARKS	
	Rail, curtain, window Rail, curtain, cubicle Outlet, 10A, 2P, 240V, duplex Bed lamp	1 2 5 2	 grounding type, parallel slots flourescent, 20w, with night light with pendant switch	
	Outlet, 15A, 2P, 240V, single Nurse Call Station, normal Nurse Call Station, emergency Smoke detector	1 2 1 1	grounding type, tandem slots	

Hospital: Tertiary, 100-Bed	ROOM DATA SHEET		Department of Health HEALTH INFRASTRUCTURE SERVICE
Updated Reference: May 1992	Department: INPATIENT NURSING WARDS	Room Title: TYPICAL 2-BED WARD	Reference Sheet Number 100B-NU-RDS06B
TECHNICAL DESIGN DATA:			
ENVIRONMENTAL CONDITIONS	DESIGN DATA	ENVIRONMENTAL CONDITIONS	DESIGN DATA
AIR		LIGHTING AND VISUAL	
Outdoor air temperature (deg.C)	ave. local station temp. reading	General illumination (LUX)	250
Room Temperature (deg. C)	25	Night illumination (LUX)	50
Mechanical ventilation		Task illumination (LUX)	500
Volume (cu.m./hr.-person)	12.75	Colour rendering	essential : DESIRABLE : unnecessary
Velocity (m./hr.)	900	Standby light	ESSENTIAL : desirable : unnecessary
Pressure		Emergency light	essential : DESIRABLE : unnecessary
Exhaust (psi)	NA	Daylight	essential : DESIRABLE : unnecessary
Inlet (psi)	NA	View out	essential : DESIRABLE : unnecessary
%Dust filtration	93% - 99% @ 1 micron	Privacy	essential : DESIRABLE : unnecessary
Humidity (%RH)	50	Black out	essential : desirable : UNNECESSARY
Cooling load (TR)	1		
SOUND			
Acceptable sound level (db)	40	SAFETY	
Speech privacy	essential: DESIRABLE: unnecessary	Accessible hot surface:	NA
Quality which cannot be tolerated.	tonal impact	Maximum temperature (deg. C)	NA
		Domestic hot water:	at lavatory
		Maximum temperature (deg. C)	70
		Access limit	medical staff & patients
		Fire risk	LOW : medium : high
		Other risks	NA

Hospital: Tertiary, 100-Bed	ROOM DATA SHEET		Department of Health HEALTH INFRASTRUCTURE SERVICE
Updated Reference: May 1992	Department: INPATIENT NURSING WARDS	Room Title: TYPICAL 2-BED WARD	Reference Sheet Number 100B-NU-RDS06C
TECHNICAL DESIGN DATA:		LAYOUT OF ROOM AND SPACE COMPONENTS:	
DIRECT SERVICES	DESIGN DATA	<p style="text-align: right;">Scale 1:100 mts.</p> <p style="text-align: center;">3000 mm</p> <p style="text-align: center;">1400 1600</p> <p style="text-align: center;">6600 mm</p> <p style="text-align: center;">2400</p> <p style="text-align: center;">4200</p> <p style="text-align: center;">PLAN</p> <p>Key (Plan)</p> <ol style="list-style-type: none"> Adjusted hospital bed Chair, upright, stacking Nurses' call station with pendant switch Bedside cabinet Bed light w/night light Overbed table Footstool Curtain and rod Nurses' call station (emergency) Nurses' call done-light <p>Key (Section)</p> <ol style="list-style-type: none"> Adjustable hospital bed Nurses' calling station Bedside cabinet Bed light, w/night light Oxygen outlet Suction Outlet] Suction bottle bracket <p style="text-align: center;">SECTION</p>	
Disposal	hospital solid waste type : A,E		
Hot water	required at lavatory		
Cold water	req'd at lavatory & toilet fixtures		
Drainage	req'd at lav., toi. fix. & flr.		
Gas	oxygen outlet required		
Compressed air	NA		
Steam	NA		
Others	suction outlet required		
DIRECT DEMANDS ON FLOOR AND WALL			
Loading	NA		
Spillage	SLIGHT : occasional : frequent		
Foot traffic	light : MEDIUM : heavy		
Wheel traffic	light : MEDIUM : heavy		
Impacts	NA		
Abrasion	NA		
Easy maintenance	ESSENTIAL: desirable: unnecessary		
Vibration free	ESSENTIAL: desirable: unnecessary		
Door sets	bed, stretcher trolley, wheelchair	SPACE DEMANDS (Total Minimum Space Required in sq.m.): 15.96	
	access	Space Components	Minimum Space Required/Component
Windows	clear, solar control, privacy	Ward Area	12.60 sq.m.
	control	Toilet and Bath	3.36 sq.m.
Internal glazing	nil		

Hospital: Tertiary, 100-Bed	ROOM DATA SHEET		Department of Health HEALTH INFRASTRUCTURE SERVICE
Updated Reference: May 1992	Department: INPATIENT NURSING WARD	Room Title: TYPICAL 4-BED WARD	Reference Sheet Number 100B-NU-RDS07A

FUNCTIONAL DESIGN REQUIREMENTS:

<p>This activity space provides facilities needed for the following activities:</p> <ul style="list-style-type: none"> a. Patient may arrive on foot, in a wheelchair or on a stretcher trolley. b. Transfer of patient to a hospital bed from a wheelchair or a stretcher trolley and vice versa. c. Patient undresses/dresses in the vicinity of hospital bed, with or without assistance. d. Patient takes meal in bed or in sitting area. e. Patient receives visitors. f. Patient stores clothing and other personal belongings. g. Patient requires privacy. h. Use of toilet and bath. i. Use of monitoring/diagnostic equipment. j. Physicians and nurses check on patients. k. Hand washing and other clean-up activities. <p>People Involved:</p> <ul style="list-style-type: none"> 4 x Patients 4 x Visitors 1 x Resident Physician 1 x Nurse or Nursing Aide <p>Planning Relationships:</p> <ul style="list-style-type: none"> a. Close to Nurse Station. b. Distant to Out-patient Department. c. Close to Medical/Surgical Services. <p>This activity space provides facilities needed for the delivery of General Patient Care.</p>	EQUIPMENT AND ACCESSORY CHECKLIST	QUANTITY	REMARKS
	FURNITURE AND FIXTURE CHECKLIST	QUANTITY	REMARKS
	ADDITIONAL EQUIPMENT AND ENGINEERING TERMINALS	QUANTITY	REMARKS
	Adjustable hospital bed	4	
	Overbed table	4	
	Chair, upright, stacking	4	
	Footstool	4	
	Bedside cabinet, 500x600	4	
	Lavatory	1	
	Rail, curtain, window	1	
	Rail, curtain, cubicle	4	
	Outlet, 10A, 2P, 240V, Duplex	10	grounding type, parallel slots
	Bed light w/ night lamp	4	fluorescent, 20W, with night light with pendant switch
	Outlet, 15A, 2P, 240V, Single	2	grounding type, tandem slots
	Nurse Call Station, normal	4	with pendant switch
	Nurse Call Station, emergency	1	

Hospital:	ROOM DATA SHEET		Department of Health HEALTH INFRASTRUCTURE SERVICE
Tertiary, 100-Bed			
Updated Reference: May 1992	Department: INPATIENT NURSING WARDS	Room Title: TYPICAL 4-BED WARD	Reference Sheet Number 100B-NU-RDS07B
TECHNICAL DESIGN DATA:			
ENVIRONMENTAL CONDITIONS	DESIGN DATA	ENVIRONMENTAL CONDITIONS	DESIGN DATA
AIR		LIGHTING AND VISUAL	
Outdoor air temperature (deg C)	ave: local station temp. reading	General illumination (LUX)	250
Room Temperature (deg C)	25	Night illumination (LUX)	50
Mechanical ventilation		Task illumination (LUX)	500
Volume (cu m./hr.-person)	12.75	Colour rendering	essential : DESIRABLE : unnecessary
Velocity (m./hr.)	900	Standby light	ESSENTIAL : desirable : unnecessary
Pressure		Emergency light	essential : DESIRABLE : unnecessary
Exhaust (psi)	NA	Daylight	essential : DESIRABLE : unnecessary
Inlet (psi)	NA	View out	essential : DESIRABLE : unnecessary
%Dust filtration	93% - 99% @ 1 micron	Privacy	essential : DESIRABLE : unnecessary
Humidity (%RH)	50	Black out	essential : desirable : UNNECESSARY
Cooling load (TR)	2		
SOUND			
Acceptable sound level (db)	40	SAFETY	
Speech privacy	essential: DESIRABLE: unnecessary	Accessible hot surface:	NA
Quality which cannot be tolerated	tonal impact	Maximum temperature (deg. C)	NA
		Domestic hot water:	at lavatory
		Maximum temperature (deg. C)	70
		Access limit	medical staff & patients
		Fire risk	LOW : medium : high
		Other risks	NA

Hospital: Tertiary, 100-Bed	ROOM DATA SHEET		Department of Health HEALTH INFRASTRUCTURE SERVICE
Updated Reference: May 1992	Department: INPATIENT NURSING WARDS	Room Title: TYPICAL 4-BED WARD	Reference: Sheet Number 100B-NU-RDS07C

TECHNICAL DESIGN DATA:		LAYOUT OF ROOM AND SPACE COMPONENTS:							
DIRECT SERVICES	DESIGN DATA								
Disposal	hospital solid waste type : A/E								
Hot water	required at lavatory								
Cold water	req'd at lavatory & toilet fixtures								
Drainage	req'd at lav. toi. fix. & flr.								
Gas	oxygen outlet required								
Compressed air	NA								
Steam	NA								
Others	suction outlet required								
DIRECT DEMANDS ON FLOOR AND WALL				<p>Key</p> <ul style="list-style-type: none"> 1 Adjustable hosp. bed 2 Chair, upright, stacking 3 Nurse call station 4 Bedside cabinet 5 Bed light 6 Overbed table 7 Footstool 8 Curtain and rod 9 Nurse call (emer) 10 Nurse call dome light 11 Lavatory 					
Loading	NA	<p>Key</p> <p style="text-align: center;">S E C T I O N</p>							
Spillage	SLIGHT : occasional : frequent	<p>1 Adjustable hospital bed</p> <p>3 Nurses' call station</p> <p>4 Bedside cabinet</p> <p>5 Bed light</p> <p>11 Suction outlet</p> <p>12 Suction outlet</p> <p>13 Suction outlet basket</p>							
Foot traffic	light : MEDIUM : heavy	<p>SPACE DEMANDS (Total Minimum Space Required in sq.m.): 28.56</p> <table border="1" style="width: 100%;"> <thead> <tr> <th>Space Components</th> <th>Minimum Space Required/Component</th> </tr> </thead> <tbody> <tr> <td>Ward Area</td> <td>25.20 sq.m.</td> </tr> <tr> <td>Toilet and Bath</td> <td>3.36 sq.m.</td> </tr> </tbody> </table>		Space Components	Minimum Space Required/Component	Ward Area	25.20 sq.m.	Toilet and Bath	3.36 sq.m.
Space Components	Minimum Space Required/Component								
Ward Area	25.20 sq.m.								
Toilet and Bath	3.36 sq.m.								
Wheel traffic	light : MEDIUM : heavy								
Impacts	NA								
Abrasion	NA								
Easy maintenance	ESSENTIAL: desirable unnecessary								
Vibration free	ESSENTIAL: desirable unnecessary								
Door sets	bed, stretcher trolley, wheelchair access								
Windows	clear, solar control, privacy control								
Internal glazing	nil								