

**VOLUME 4 SCHEMATIC PLANS AND TECHNICAL
REQUIREMENTS OF A 100-BED HOSPITAL**

4.3 ANCILLARY Service Facility

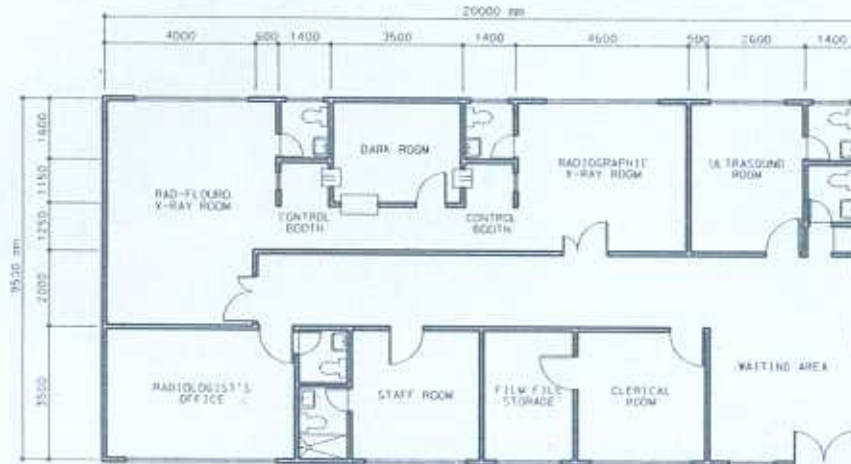
Hospital: Tertiary, 100-Bed	SERVICE FACILITY SHEET INDEX			Department of Health HEALTH INFRASTRUCTURE SERVICE	
Updated Reference: November 1991	Service Facility Title: ANCILLARY			Reference Sheet Number 100B-AN-SFSI03A	
ROOM TITLE	SPACE DEMAND (SQ. MTS.)	TOTAL AREA (SQ. MTS.)	REFERENCE SHEET NUMBER	PAGE	
RADIOLOGY		167.20	100B-AN-DDS01	4.3.1.1	
Rad-Fluoro X-ray Room	29.84		100B-AN-RDS01	4.3.1.1A	
Radiographic X-ray Room	20.64		100B-AN-RDS02	4.3.1.2.1A	
Control Booth	3.36	6.72	100B-AN-RDS03	4.3.1.3.1A	
Dark Room	14.00		100B-AN-RDS04	4.3.1.4.1A	
Ultrasound Room	14.64		100B-AN-RDS05	4.3.1.5.1A	
Waiting Area	25.36		100B-AN-RDS06	4.3.1.6.1A	
Radiologist's Office	19.95		100B-AN-RDS07	4.3.1.7.1A	
Staff Room	15.05		100B-AN-RDS08	4.3.1.8.1A	
Clerical Room	12.25		100B-AN-RDS09	4.3.1.9.1A	
Film File Storage	8.75		100B-AN-RDS10	4.3.1.10.1A	
LABORATORY		198.50	100B-AN-DDS02	4.3.2.1	
Bacteriology and Serology Section	18.00		100B-AN-RDS11	4.3.2.1.1A	
Histopathology Section	18.00		100B-AN-RDS12	4.3.2.2.1A	
Urinalysis and Biochemistry Section	18.00		100B-AN-RDS13	4.3.2.3.1A	
Hematology Section	18.00		100B-AN-RDS14	4.3.2.4.1A	
Blood Doning	10.50		100B-AN-RDS15	4.3.2.5.1A	
Waiting Area	30.50		100B-AN-RDS16	4.3.2.6.1A	
Pathologist's Office	16.00		100B-AN-RDS17	4.3.2.7.1A	
Staff Area	28.00		100B-AN-RDS18	4.3.2.8.1A	
Glass Washing and Sterilizing	21.00		100B-AN-RDS19	4.3.2.9.1A	
Storage Room	7.00		100B-AN-RDS20	4.3.2.10.1A	

Hospital: Tertiary, 100-Bed	SERVICE FACILITY SHEET INDEX			Department of Health HEALTH INFRASTRUCTURE SERVICE	
Updated Reference: November 1991	Service Facility Title: ANCILLARY			Reference Sheet Number 100B-AN-SFSI03B	
ROOM TITLE	SPACE DEMAND (SQ. MTS.)	TOTAL AREA (SQ. MTS.)	REFERENCE SHEET NUMBER	PAGE	
Locker Room and Toilet	13.50		100B-AN-RDS21	4.3.2.11.1A	
PHARMACY		99.75	100B-AN-DDS03	4.3.3.1	
Chief Pharmacist's Office	12.75		100B-AN-RDS22	4.3.3.1A	
Staff Work Area	13.50		100B-AN-RDS23	4.3.3.2.1A	
Patient Dispensing Area and Drug Info.	13.50		100B-AN-RDS24	4.3.3.3.1A	
Receiving/Breakout/Inspection Area	12.00		100B-AN-RDS25	4.3.3.4.1A	
Flammable Storage	5.25		100B-AN-RDS26	4.3.3.5.1A	
Bulk Storage	12.75		100B-AN-RDS27	4.3.3.6.1A	
Extemporaneous Preparation Area	12.00		100B-AN-RDS28	4.3.3.7.1A	
Distribution Area	18.00		100B-AN-RDS29	4.3.3.8.1A	
OUTPATIENT		399.00	100B-AN-DDS04	4.3.4.1	
OPD Waiting Area	54.00		100B-AN-RDS30	4.3.4.1.1A	
OPD Admitting/Information Counter	18.00		100B-AN-RDS31	4.3.4.2.1A	
Office of the OPD Chief	21.00		100B-AN-RDS32	4.3.4.3.1A	
Consultation Room (Pedia/Under Six)	18.00	36.00	100B-AN-RDS33	4.3.4.4.1A	
Consultation Room (Medical/Surgical)	18.00	72.00	100B-AN-RDS34	4.3.4.5.1A	
Consultation Room (OB-Gyne)	18.00	36.00	100B-AN-RDS35	4.3.4.6.1A	
Consultation Room (Family Planning)	18.00		100B-AN-RDS36	4.3.4.7.1A	
Consultation Room (Dental)	36.00		100B-AN-RDS37	4.3.4.8.1A	
Consultation Room (ENT)	18.00		100B-AN-RDS38	4.3.4.9.1A	
Consultation Room (Eye)	18.00		100B-AN-RDS39	4.3.4.10.1A	
Minor Operation Room	28.00		100B-AN-RDS40	4.3.4.11.1A	

Hospital: Tertiary, 100-Bed	DEPARTMENT DATA SHEET	Department of Health HEALTH INFRASTRUCTURE SERVICE
Updated Reference: May 1992	Department: RADIOLOGY	Reference Sheet Number 100B-AN-DDS01

LAYOUT PER DEPARTMENT SHOWING ROOMS AND SPACE COMPONENTS:

Scale 1:200 mts



Hospital: Tertiary, 100-Bed	ROOM DATA SHEET		Department of Health HEALTH INFRASTRUCTURE SERVICE
Updated Reference: May 1992.	Department RADIOLOGY	Room Title: RAD-FLUORO X-RAY ROOM	Reference Sheet Number: 100B-AN-RDS01A

FUNCTIONAL DESIGN REQUIREMENTS:

<p>This activity space provides facilities needed for the following activities:</p> <p>a. Patient puts on hospital gown. b. X-ray Technician/Technologist prepares contrast medium c. X-ray Technician/Technologist prepares and positions patient for radiographic/fluoroscopic examination. d. X-ray Technician/Radiologist introduces contrast medium into patient e. Patient undergo radiographic and/or fluoroscopic examination. f. Patient uses toilet.</p>	EQUIPMENT AND ACCESSORY CHECKLIST	QUANTITY	REMARKS
	Radiographic-fluoroscopic unit with an image intensifier and T.V. monitor and tilting table with bucky Cassette change Bucky vertical cassette stand Sink in counter Lead rubber apron Caliper, parallel arm IV stand Lead, rubber gloves Pelvimeter O ₂ Tank Steel rods First aid kit Immobilizing device	1 1 1 1 1 1 1 pair 1 1 2 1 1	
	FURNITURE AND FIXTURE CHECKLIST	QUANTITY	REMARKS
	Storage cabinet Footstool Lavatory Water closet	1 1 1 1	
<p>People Involved:</p> <p>X-ray Technician/Technologists Radiologist Patient Resident Doctors X-ray Interns I.W.</p>	ADDITIONAL EQUIPMENT AND ENGINEERING TERMINALS	QUANTITY	REMARKS
	Rail, curtain, window Outlet, 10A, 2P, 240V Outlet, 15A, 2P, 240V Outlet, intercom Smoke detector Hospital pole transformer Stand-by generating set Airconditioning units	1 3 1 1 1 1 1 1	grounding type, parallel slots grounding type, tandem slots 75 kVA (min) 75 kVA (min) window type.
<p>Planning Relationships:</p> <p>a. Close to Outpatient Department. b. Close to Emergency Department. c. Close to other Ancillary Services.</p>			

Hospital Tertiary, 100-Bed	ROOM DATA SHEET		Department of Health HEALTH INFRASTRUCTURE SERVICE
Updated Reference: May 1992	Department: RADIOLOGY	Room Title: RAD-FLUORO X-RAY ROOM	Reference Sheet Number: 100B-AN-RDS01B
TECHNICAL DESIGN DATA			
ENVIRONMENTAL CONDITIONS	DESIGN DATA	ENVIRONMENTAL CONDITIONS	DESIGN DATA
AIR		LIGHTING AND VISUAL	
Outdoor air temperature (deg. C)	ave. local station temp. reading	General illumination (LUX)	150
Room Temperature	25	Night illumination (LUX)	NA
Mechanical ventilation		Task illumination (LUX)	NA
Volume (cu. m /hr. /person)	12.75	Colour rendering	essential DESIRABLE unnecessary
Velocity (m./hr.)	750	Standby light	essential DESIRABLE unnecessary
Pressure		Emergency light	essential DESIRABLE unnecessary
Exhaust (psi)	NA	Daylight	essential desirable UNNECESSARY
inlet (psi)	NA	View out	essential desirable UNNECESSARY
% Dust filtration	93%-99% @ 1 micron	Privacy	ESSENTIAL desirable unnecessary
Humidity (%RH)	50	Black out	ESSENTIAL desirable unnecessary
Cooling load (TR)	2		
SOUND		SAFETY	
Acceptable sound level (db)	50	Accessible hot surface:	NA
Speech privacy	essential DESIRABLE unnecessary	Maximum temperature (deg. C)	NA
Quality which cannot be tolerated	tonal impact	Domestic hot water:	at Lavatory and sink
		Maximum temperature (deg. C)	70
		Access limit	radiology staff & patient
		Fire risk	LOW medium high
		Other risks	exposure to radiation

Hospital		Department of Health																			
Tertiary, 100-Bed		HEALTH INFRASTRUCTURE SERVICE																			
Updated Reference: May 1992		Department: RADIOLOGY	Room Title: RAD-FLUORO X-RAY ROOM																		
		Reference Sheet Number: 100B-CL-RDS01C																			
TECHNICAL DESIGN DATA:		LAYOUT OF ROOM AND SPACE COMPONENTS:																			
<table border="1"> <thead> <tr> <th>DIRECT SERVICES</th> <th>DESIGN DATA</th> </tr> </thead> <tbody> <tr> <td>Disposal</td> <td>hospital solid waste type - A, C</td> </tr> <tr> <td>Hot Water</td> <td>required at sink and lavatory</td> </tr> <tr> <td>Cold Water</td> <td>required at sink and toilet</td> </tr> <tr> <td>Drainage</td> <td>required at sink, toilet, fixture and floor.</td> </tr> <tr> <td>Gas</td> <td>NA</td> </tr> <tr> <td>Compressed Air</td> <td>NA</td> </tr> <tr> <td>Steam</td> <td>NA</td> </tr> <tr> <td>Others</td> <td></td> </tr> </tbody> </table>		DIRECT SERVICES	DESIGN DATA	Disposal	hospital solid waste type - A, C	Hot Water	required at sink and lavatory	Cold Water	required at sink and toilet	Drainage	required at sink, toilet, fixture and floor.	Gas	NA	Compressed Air	NA	Steam	NA	Others		<p>Scale 1:100 mts.</p>	
DIRECT SERVICES	DESIGN DATA																				
Disposal	hospital solid waste type - A, C																				
Hot Water	required at sink and lavatory																				
Cold Water	required at sink and toilet																				
Drainage	required at sink, toilet, fixture and floor.																				
Gas	NA																				
Compressed Air	NA																				
Steam	NA																				
Others																					
DIRECT DEMANDS ON FLOOR AND WALL		<p>Key</p> <table border="0"> <tr> <td>1. Rad-Fluoro x-ray unit</td> <td>9. IV stand</td> </tr> <tr> <td>2. High Tension transformer</td> <td>10. Red warning light</td> </tr> <tr> <td>3. Vertical bucky stand</td> <td>11. TV monitor</td> </tr> <tr> <td>4. Steel rods</td> <td>12. Cassette Changer</td> </tr> <tr> <td>5. Footstool</td> <td>13. Airconditioning unit</td> </tr> <tr> <td>6. Sink</td> <td>14. Wall for control booth</td> </tr> <tr> <td>7. Storage cabinet</td> <td>15. Waste receptacle</td> </tr> </table>		1. Rad-Fluoro x-ray unit	9. IV stand	2. High Tension transformer	10. Red warning light	3. Vertical bucky stand	11. TV monitor	4. Steel rods	12. Cassette Changer	5. Footstool	13. Airconditioning unit	6. Sink	14. Wall for control booth	7. Storage cabinet	15. Waste receptacle				
1. Rad-Fluoro x-ray unit	9. IV stand																				
2. High Tension transformer	10. Red warning light																				
3. Vertical bucky stand	11. TV monitor																				
4. Steel rods	12. Cassette Changer																				
5. Footstool	13. Airconditioning unit																				
6. Sink	14. Wall for control booth																				
7. Storage cabinet	15. Waste receptacle																				
Loading		light : MEDIUM : heavy																			
Spillage		slight : OCCASIONAL : frequent																			
Foot traffic		LIGHT : medium : heavy																			
Wheel traffic		light : MEDIUM : heavy																			
Impacts		SLIGHT : occasional : frequent																			
Abrasion		SLIGHT : occasional : frequent																			
Easy maintenance		ESSENTIAL : desirable : unnecessary																			
Vibration free		ESSENTIAL : desirable : unnecessary																			
Door sets		see appendix G																			
		SPACE DEMANDS (Total Minimum Space Required in sq.m.): 29.84																			
		Space Components	Minimum Space Required/Component																		
		X-ray Room	27.60 sq.m.																		
		Toilet	2.24 sq.m.																		
		REGULATIONS AND NOTES: (for other details, see APPENDIX 6)																			
Windows		see appendix G																			
Internal glazing		lead glass																			
		<p>1. Minimum ceiling height = 3.00 mts 2. Walls shall be 150mm thick with 12mm plaster on each side. 3. Door must be lined with 1.50mm thick leads sheet from edge to edge including door jambs to a height of at least 2.00 mts. from floor.</p>																			

Hospital: Tertiary, 100-Bed	ROOM DATA SHEET		Department of Health HEALTH INFRASTRUCTURE SERVICE
Updated Reference: May 1992	Department: RADIOLOGY	Room Title: RADIOGRAPHIC X-RAY ROOM	Reference Sheet Number: 100B-AN-RDS02A

FUNCTIONAL DESIGN REQUIREMENTS:

<p>This activity space provides facilities needed for the following activities:</p> <p>a. Patient puts on hospital gown.</p> <p>b. X-ray Technician/Technologist prepares and position patient for x-ray examination.</p> <p>c. Patient undergoes radiographic examination.</p> <p>People Involved:</p> <p>X-ray Technician/Technologists</p> <p>Patient</p> <p>X-ray Interns, if these are any</p> <p>Institution worker/companion</p> <p>Planning Relationships:</p> <p>a. Close to Outpatient Department.</p> <p>b. Close to Emergency Department.</p> <p>c. Close to other Ancillary Services.</p>	EQUIPMENT AND ACCESSORY CHECKLIST	QUANTITY	REMARKS
	<p>Radiographic x-ray unit</p> <p>Vertical cassette stand</p> <p>IV stand</p> <p>sink in counter</p> <p>waste receptacle</p> <p>Lead rubber gown</p> <p>Lead rubber gloves</p> <p>Caliper parallel arm</p> <p>Compression band</p> <p>Film I.D. marker</p> <p>Rods for hanging</p>	<p>1</p> <p>1</p> <p>1</p> <p>1</p> <p>1</p> <p>1</p> <p>1 pair</p> <p>1</p> <p>1</p> <p>1</p> <p>1 set</p>	
	FURNITURE AND FIXTURE CHECKLIST	QUANTITY	REMARKS
	<p>Storage cabinet</p> <p>Footstool</p> <p>Lavatory</p> <p>Water closet</p>	<p>1</p> <p>1</p> <p>1</p> <p>1</p>	
	ADDITIONAL EQUIPMENT AND ENGINEERING TERMINALS	QUANTITY	REMARKS
	<p>Rail, curtain, window</p> <p>Outlet, 10A, 2P, 240V, duplex</p> <p>Outlet, 15A, 2P, 240V, single</p> <p>Outlet, intercom</p> <p>Smoke detector</p> <p>Airconditioning unit</p>	<p>1</p> <p>3</p> <p>1</p> <p>1</p> <p>1</p> <p>1</p>	<p>grounding type, parallel slots</p> <p>grounding type, tandem slots</p> <p>window type.</p>

Hospital	ROOM DATA SHEET		Department of Health
Tertiary, 100-Bed			HEALTH INFRASTRUCTURE SERVICE
Updated Reference May 1992	Department: RADIOLOGY	Room Title: RADIOGRAPHIC X-RAY ROOM	Reference Sheet Number: 100B-AN-RDS02B
TECHNICAL DESIGN DATA:			
ENVIRONMENTAL CONDITIONS	DESIGN DATA	ENVIRONMENTAL CONDITIONS	DESIGN DATA
AIR		LIGHTING AND VISUAL	
Outdoor air temperature (deg. C)	ave. local station temp. reading	General illumination (LUX)	150
Room Temperature	25	Night illumination (LUX)	NA
Mechanical ventilation		Task illumination (LUX)	NA
Volume (cu.m./hr.-person)	12.75	Colour rendering	essential DESIRABLE unnecessary
Velocity (m/hr.)	750	Standby light	essential DESIRABLE unnecessary
Pressure:		Emergency light	essential DESIRABLE unnecessary
Exhaust (psi)	NA	Daylight	essential desirable UNNECESSARY
Inlet (psi)	NA	View out	essential desirable UNNECESSARY
% Dust filtration	93%-99% @ 1 micron	Privacy	ESSENTIAL desirable unnecessary
Humidity (%RH)	50	Black out	ESSENTIAL desirable unnecessary
Cooling load (TR)	1.5		
SOUND		SAFETY	
Acceptable sound level (db)	50	Accessible hot surface:	NA
Speech privacy	essential, DESIRABLE, unnecessary	Maximum temperature (deg. C)	NA
Quality which cannot be tolerated	tonal impact	Domestic hot water	at sink and lavatory
		Maximum temperature (deg. C)	70
		Access limit	radiology staff & patient
		Fire risk	LOW - medium - high
		Other risks	exposure to radiation

Hospital		Department of Health																			
Tertiary, 100-Bed		HEALTH INFRASTRUCTURE SERVICE																			
ROOM DATA SHEET		Reference Sheet Number: 100B-AN-RDS02C																			
Updated Reference: May 1992		Room Title: RADIOGRAPHIC X-RAY ROOM																			
TECHNICAL DESIGN DATA:		LAYOUT OF ROOM AND SPACE COMPONENTS:																			
<table border="1"> <thead> <tr> <th>DIRECT SERVICES:</th> <th>DESIGN DATA</th> </tr> </thead> <tbody> <tr> <td>Disposal</td> <td>hospital solid waste type : A, C</td> </tr> <tr> <td>Hot Water</td> <td>required at sink and lavatory</td> </tr> <tr> <td>Cold Water</td> <td>required at sink and toilet fixtures</td> </tr> <tr> <td>Drainage</td> <td>required at sink, toilet, fixture and floor</td> </tr> <tr> <td>Gas</td> <td>NA</td> </tr> <tr> <td>Compressed Air</td> <td>NA</td> </tr> <tr> <td>Steam</td> <td>NA</td> </tr> <tr> <td>Others</td> <td></td> </tr> </tbody> </table>		DIRECT SERVICES:	DESIGN DATA	Disposal	hospital solid waste type : A, C	Hot Water	required at sink and lavatory	Cold Water	required at sink and toilet fixtures	Drainage	required at sink, toilet, fixture and floor	Gas	NA	Compressed Air	NA	Steam	NA	Others		<p>Scale 1:100 mts.</p>	
DIRECT SERVICES:	DESIGN DATA																				
Disposal	hospital solid waste type : A, C																				
Hot Water	required at sink and lavatory																				
Cold Water	required at sink and toilet fixtures																				
Drainage	required at sink, toilet, fixture and floor																				
Gas	NA																				
Compressed Air	NA																				
Steam	NA																				
Others																					
DIRECT DEMANDS ON FLOOR AND WALL:		Key																			
Loading:	light : MEDIUM : heavy	1. Radiographic x-ray unit	7. foot stool																		
Spillage:	slight : OCCASIONAL : frequent	2. High Tension transformer	8. Sink in counter																		
Foot traffic:	light : MEDIUM : heavy	3. Vertical cassette stand	9. Red warning light																		
Wheel traffic:	light : MEDIUM : heavy	4. Steel rods	10. Airconditioning unit																		
Impacts:	SLIGHT : occasional : frequent	5. Waste receptacle	11. Storage cabinet																		
Abrasion:	SLIGHT : occasional : frequent	6. IV stand																			
SPACE DEMANDS (Total Minimum Space Required in sq m) : 20.64																					
Easy maintenance:	ESSENTIAL : desirable : unnecessary	Space Components	Minimum Space Required/Component																		
Vibration free:	ESSENTIAL : desirable : unnecessary	X-ray Room	18.40 sq m																		
Door set:	see appendix G	Toilet	2.24 sq m																		
REGULATIONS AND NOTES (for other details, see APPENDIX 6)																					
Windows:	see appendix G	1. Minimum ceiling height = 3.00 mts.																			
		2. Walls shall be 150mm thick with 12mm plaster on each side.																			
Internal glazing:	lead glass	3. Door must be lined with 1.50mm thick leads sheet from edge to edge including door jambs to a height of at least 2.00 mts. from floor.																			

Hospital: Tertiary, 100-Bed	ROOM DATA SHEET		Department of Health HEALTH INFRASTRUCTURE SERVICE
Updated Reference: May 1992	Department: RADIOLOGY	Room Title: CONTROL BOOTH	Reference Sheet Number: 100B-AN-RDS03A


FUNCTIONAL DESIGN REQUIREMENTS:

<p>This activity space provides facilities needed for the following activities:</p> <ul style="list-style-type: none"> a. X-ray Technician/Technologist formulates/sets radiographic/fluoroscopic techniques. b. X-ray Technician/Technologist gives instruction to patient undergoing radiographic/fluoroscopic examinations. c. X-ray Technician/Technologist conducts radiographic exposures. d. X-ray Technician/Technologist views patient during radiographic examination. <p>People Involved:</p> <ul style="list-style-type: none"> X-ray Technicians Technologists X-ray Interns Radiologist Resident Physician <p>Planning Relationships:</p> <ul style="list-style-type: none"> a. Adjacent to X-ray Rooms. b. Adjacent to Dark Room. 	EQUIPMENT AND ACCESSORY CHECKLIST	QUANTITY	REMARKS
	Control console of radiographic and fluoroscopic x-ray units	2	
	Automatic voltage regulator	2	
	Automatic film processor	1	
Leaded pass box	2		
	FURNITURE AND FIXTURE CHECKLIST	QUANTITY	REMARKS
	Cassette rack	1	With partitions for different sizes of cassette.
	Footstool	2	with two steps
	ADDITIONAL EQUIPMENT AND ENGINEERING TERMINALS	QUANTITY	REMARKS
	Outlet, 10A, 2P, 240V	2	grounding type, parallel slots
	Circuit breaker (rating depends on x-ray size)	1	
	Light switch with dimmer	1	

Hospital	ROOM DATA SHEET		Department of Health
Tertiary, 100-Bed			HEALTH INFRASTRUCTURE SERVICE
Updated Reference: May 1992	Department: RADIOLOGY	Room Title: CONTROL BOOTH	Reference Sheet Number: 100B-AN-RDS03B
TECHNICAL DESIGN DATA:			
ENVIRONMENTAL CONDITIONS	DESIGN DATA	ENVIRONMENTAL CONDITIONS	DESIGN DATA
AIR		LIGHTING AND VISUAL	
Outdoor air temperature (deg. C)	ave. local station temp. reading	General illumination (LUX)	500
Room Temperature	25	Night illumination (LUX)	NA
Mechanical ventilation		Task illumination (LUX)	NA
Volume (cu m /hr. /person)	12.75	Colour rendering	essential: desirable: UNNECESSARY
Velocity (m/hr.)	750	Standby light	essential: DESIRABLE: unnecessary
Pressure		Emergency light	essential: DESIRABLE: unnecessary
Exhaust (psi)	NA	Daylight	essential: desirable: UNNECESSARY
Inlet (psi)	NA	View out	essential: desirable: UNNECESSARY
% Dust filtration	93%-99% @ 1 micron	Privacy	essential: DESIRABLE: unnecessary
Humidity (%RH)	50	Black out	ESSENTIAL: desirable: unnecessary
Cooling load (TR)	0.5		
SOUND		SAFETY	
Acceptable sound level (db)	50	Accessible hot surface:	NA
Speech privacy	essential: DESIRABLE: unnecessary	Maximum temperature (deg. C)	NA
Quality which cannot be tolerated	tonal impact	Domestic hot water:	NA
		Maximum temperature (deg. C)	NA
		Access limit	radiology staff
		Fire risk	LOW: medium: high
		Other risks	NA

Hospital: Tertiary, 100-Bed	ROOM DATA SHEET		Department of Health HEALTH INFRASTRUCTURE SERVICE
Updated Reference: May 1992	Department: RADIOLOGY	Room Title: CONTROL BOOTH	Reference Sheet Number: 100B-AN-RDS03C
TECHNICAL DESIGN DATA:		LAYOUT OF ROOM AND SPACE COMPONENTS:	
DIRECT SERVICES	DESIGN DATA	Scale 1:100 mts.	
Disposal	hospital solid waste type : A		
Hot water	NA		
Cold water	NA		
Drainage	NA		
Gas	NA		
Compressed air	NA		
Steam	NA		
Others			
DIRECT DEMANDS ON FLOOR AND WALL			
Loading	NA		
Spillage	NA		
Foot traffic	light : MEDIUM : heavy		
Wheel traffic	NA		
Impacts	NA		
Abrasion	NA		
Easy maintenance	ESSENTIAL, desirable, unnecessary	Key	
Vibration free	ESSENTIAL, desirable, unnecessary	1. Automatic film processor 5. Cassete rack 2. Control console 6. Loaded pass box 3. Automatic voltage regulator 7. Ledged glass view window 4. Food stool	
Door sets	nil, open to circulation	SPACE DEMANDS (Total Minimum Space Required in sq.m.): 3.36	
Windows	nil	REGULATIONS AND NOTES: (for other details, see APPENDIX 5)	
Internal glazing	ledged glass view window	1. Booth should be located to the right of machine to allow observance of patient when inclining the table, since machines with end pivoted tables tilt to the right. 2. Viewing window shall be lead glass 203x205mm, 15mm thick 3. Wall height = 2.00 mts.	

Hospital	ROOM DATA SHEET		Department of Health HEALTH INFRASTRUCTURE SERVICE
Tertiary, 100-Bed			
Updated Reference: May 1992	Department: RADIOLOGY	Room Title: DARK ROOM	Reference Sheet Number: 100B-AN-RDS04B
TECHNICAL DESIGN DATA:			
ENVIRONMENTAL CONDITIONS	DESIGN DATA	ENVIRONMENTAL CONDITIONS	DESIGN DATA
AIR		LIGHTING AND VISUAL	
Outdoor air temperature (deg. C)	ave. local station temp. reading	General illumination (LUX)	150
Room Temperature	25	Night illumination (LUX)	NA
Mechanical ventilation		Task illumination (LUX)	NA
Volume (cu.m./hr./person)	12.75	Colour rendering	essential desirable UNNECESSARY
Velocity (m/hr.)	750	Standby light	essential DESIRABLE unnecessary
Pressure		Emergency light	essential desirable UNNECESSARY
Exhaust (psi)	1.15	Daylight	essential desirable UNNECESSARY
Inlet (psi)	1.15	View out	essential desirable UNNECESSARY
% Dust filtration	93%-99% @ 1 micron	Privacy	ESSENTIAL desirable unnecessary
Humidity (%RH)	50	Black out	ESSENTIAL desirable unnecessary
Cooling load (TR)	1		
SOUND		SAFETY	
Acceptable sound level (db)	50	Accessible hot surface:	NA
Speech privacy	essential DESIRABLE unnecessary	Maximum temperature (deg. C)	NA
Quality which cannot be tolerated	tonal impact	Domestic hot water	NA
		Maximum temperature (deg. C)	NA
		Access limit	radiology staff
		Fire risk:	low MEDIUM high
		Other risks	NA

Hospital: Tertiary, 100-Bed	ROOM DATA SHEET		Department of Health HEALTH INFRASTRUCTURE SERVICE																						
Updated Reference: May 1992	Department: RADIOLOGY	Room Title: DARK ROOM	Reference Sheet Number: 100B-AN-RDS04C																						
TECHNICAL DESIGN DATA:		LAYOUT OF ROOM AND SPACE COMPONENTS:																							
DIRECT SERVICES	DESIGN DATA	<p style="text-align: right;">Scale 1:100 mts.</p> 																							
Disposal	hospital solid waste type : A,D																								
Hot water	NA																								
Cold water	required at sink and processing tank																								
Drainage	required at sink, tanks and floor																								
Gas	NA																								
Compressed air	NA																								
Steam	NA																								
Others:																									
DIRECT DEMANDS ON FLOOR AND WALL																									
Loading	NA																								
Spillage	slight : occasional : FREQUENT																								
Foot traffic	light : MEDIUM : heavy																								
Wheel traffic	NA																								
Impacts	NA																								
Abrasion	NA																								
Easy maintenance	ESSENTIAL: desirable: unnecessary																								
Vibration free	ESSENTIAL: desirable: unnecessary																								
Door sets	light lock painted matte black with door lock																								
Windows	nil, provide light lock air inlet and air outlet																								
Internal glazing	nil																								
		<p>Key</p> <table border="0"> <tr> <td>1. Automatic film processor</td> <td>12. Waste receptacle</td> </tr> <tr> <td>2. Leaded pass box</td> <td>13. Cassettes with intensifying screen</td> </tr> <tr> <td>3. Film dryer</td> <td>14. Metallic stem dial type thermometer</td> </tr> <tr> <td>4. Exhaust fan</td> <td>15. Luminous timer</td> </tr> <tr> <td>5. Safelight</td> <td>16. Towel bar</td> </tr> <tr> <td>6. Film Loading Counter</td> <td>17. Steel rods</td> </tr> <tr> <td>7. Film hanger rack</td> <td>18. Plastic paddles</td> </tr> <tr> <td>8. Light Tight air-inlet</td> <td>19. Used fixed tank or container with cover</td> </tr> <tr> <td>9. Film bin</td> <td></td> </tr> <tr> <td>10. Processing tank</td> <td></td> </tr> <tr> <td>11. Sink in counter</td> <td></td> </tr> </table>		1. Automatic film processor	12. Waste receptacle	2. Leaded pass box	13. Cassettes with intensifying screen	3. Film dryer	14. Metallic stem dial type thermometer	4. Exhaust fan	15. Luminous timer	5. Safelight	16. Towel bar	6. Film Loading Counter	17. Steel rods	7. Film hanger rack	18. Plastic paddles	8. Light Tight air-inlet	19. Used fixed tank or container with cover	9. Film bin		10. Processing tank		11. Sink in counter	
1. Automatic film processor	12. Waste receptacle																								
2. Leaded pass box	13. Cassettes with intensifying screen																								
3. Film dryer	14. Metallic stem dial type thermometer																								
4. Exhaust fan	15. Luminous timer																								
5. Safelight	16. Towel bar																								
6. Film Loading Counter	17. Steel rods																								
7. Film hanger rack	18. Plastic paddles																								
8. Light Tight air-inlet	19. Used fixed tank or container with cover																								
9. Film bin																									
10. Processing tank																									
11. Sink in counter																									
		SPACE DEMANDS (Total Minimum Space Required in sq.m.): 14.00																							
		Space Components	Minimum Space Required/Component																						
		Dark Room	9.625 sq.m.																						
		Light Work Area	4.375 sq.m.																						
		REGULATIONS AND NOTES: (for other details, see APPENDIX G)																							
		1. Air inlet must be installed near floor.																							
		2. Air outlet with exhaust fan must be installed above processing tank near the ceiling.																							

Hospital: Tertiary, 100-Bed	ROOM DATA SHEET		Department of Health HEALTH INFRASTRUCTURE SERVICE
Updated Reference: May 1992	Department: RADIOLOGY	Room Title: ULTRASOUND ROOM	Reference Sheet Number: 100B-AN-RDS05A

FUNCTIONAL DESIGN REQUIREMENTS:

<p>This activity space provides facilities needed for the following activities:</p> <ul style="list-style-type: none"> a. Patient is assisted on to examination table b. Ultrasonologist performs specified examination on patient c. Patient and staff use toilet <p>People Involved:</p> <ul style="list-style-type: none"> 1 x Ultrasonographer 1 x Patient <p>Planning Relationships:</p> <ul style="list-style-type: none"> a. Close to X-ray Room. b. Close to Waiting Area. 	EQUIPMENT AND ACCESSORY CHECKLIST	QUANTITY	REMARKS	
	Ultrasound unit Image receptor Automatic voltage regulator Examining table	1 1 1 1		
	FURNITURE AND FIXTURE CHECKLIST	QUANTITY	REMARKS	
	Footstool Swivel chair Adjusted chair Desk, 750 x 1200 Bedside table Steel filing cabinet, 500 x 700 Chair, upright, stacking Lavatory Water closet	1 1 1 1 1 1 1 1		
	ADDITIONAL EQUIPMENT AND ENGINEERING TERMINALS	QUANTITY	REMARKS	
	Rail, curtain, window Outlet, 10A, 2P, 240V Outlet, 15A, 2P, 240V Airconditioning unit Outlet, intercom	1 3 2 1 1	 grounding type, parallel slots grounding type, tandem slots 	

Hospital Tertiary, 100-Bed	ROOM DATA SHEET		Department of Health HEALTH INFRASTRUCTURE SERVICE
Updated Reference: May 1992	Department: RADIOLOGY	Room Title: ULTRASOUND ROOM	Reference Sheet Number: 100B-AN-RDS05B
TECHNICAL DESIGN DATA:			
ENVIRONMENTAL CONDITIONS	DESIGN DATA	ENVIRONMENTAL CONDITIONS	DESIGN DATA
AIR		LIGHTING AND VISUAL	
Outdoor air temperature (deg. C)	ave. local station temp. reading	General illumination (LUX)	250
Room Temperature	25	Night illumination (LUX)	NA
Mechanical ventilation		Task illumination (LUX)	NA
Volume (cu.m./hr. -person)	12.75	Colour rendering	essential: DESIRABLE: unnecessary
Velocity (m.hr.)	900	Standby light	essential: DESIRABLE: unnecessary
Pressure:		Emergency light	essential: DESIRABLE: unnecessary
Exhaust (psi)	NA	Daylight	essential: desirable: UNNECESSARY
Inlet (psi)	NA	View out	essential: desirable: UNNECESSARY
% Dust filtration	93%-99% @ 1 micron	Privacy	ESSENTIAL: desirable: unnecessary
Humidity (%RH)	50	Black out	essential: desirable UNNECESSARY
Cooling load (TR)	1.2		
SOUND		SAFETY	
Acceptable sound level (db)	40	Accessible hot surface:	NA
Speech privacy	essential: DESIRABLE: unnecessary	Maximum temperature (deg. C)	NA
Quality which cannot be tolerated	tonal impact	Domestic hot water:	at Lavatory
		Maximum temperature (deg. C)	70
		Access limit	radiology staff & patient
		Fire risk	LOW: medium: high
		Other risks	NA

Hospital: Tertiary, 100-Bed	ROOM DATA SHEET		Department of Health HEALTH INFRASTRUCTURE SERVICE
Updated Reference: May 1992	Department: RADIOLOGY	Room Title: WAITING AREA	Reference Sheet Number: 100B-AN-RDS06A
FUNCTIONAL DESIGN REQUIREMENTS:			
<p>This activity space provides facilities needed for the following activities:</p> <ul style="list-style-type: none"> a. Patient wait to be x-rayed b. Patients wait for the released of their x-ray results. c. Patients in stretchers and wheelchairs and their companions/ watchers wait. <p>People Involved:</p> <ul style="list-style-type: none"> 1 x X-ray Clerk Companions/Watchers <p>Planning Relationships:</p> <ul style="list-style-type: none"> a. Front line area of the Radiology Department . 	EQUIPMENT AND ACCESSORY CHECKLIST	QUANTITY	REMARKS
	TV stand Waste receptacle		
	FURNITURE AND FIXTURE CHECKLIST	QUANTITY	REMARKS
	Chair, upright, stacking Desk, 750 x 1200 Steel filing cabinet, 500x700 Wooden bench, 400x2000 Wooden bench 400x1500 Slop sink Lavatory Water closet	1 1 2 1 1 1 1 1	
	ADDITIONAL EQUIPMENT AND ENGINEERING TERMINALS	QUANTITY	REMARKS
	Outlet, intercom Outlet, 10A, 2P, 240V	1 3	grounding type, parallel slots

Hospital	ROOM DATA SHEET		Department of Health HEALTH INFRASTRUCTURE SERVICE
Tertiary, 100-Bed			
Updated Reference: May 1992	Department: RADIOLOGY	Room Title: WAITING AREA	Reference Sheet Number: 100B-AN-RDS06B
TECHNICAL DESIGN DATA:			
ENVIRONMENTAL CONDITIONS	DESIGN DATA	ENVIRONMENTAL CONDITIONS	DESIGN DATA
AIR		LIGHTING AND VISUAL	
Outdoor air temperature (deg. C)	ave. local station temp. reading	General illumination (LUX)	250
Room Temperature	ambient	Night illumination (LUX)	NA
Mechanical ventilation		Task illumination (LUX)	NA
Volume (cu.m./hr.-person)	NA	Colour rendering	essential: DESIRABLE: unnecessary
Velocity (m/hr.)	NA	Standby light	essential: DESIRABLE: unnecessary
Pressure		Emergency light	ESSENTIAL: desirable: unnecessary
Exhaust (psi)	NA	Daylight	essential: DESIRABLE: unnecessary
Inlet (psi)	NA	View out	essential: DESIRABLE: unnecessary
% Dust filtration	NA	Privacy	essential: desirable: UNNECESSARY
Humidity (%RH)	NA	Black out	essential: desirable: UNNECESSARY
Cooling load (TR)	NA		
SOUND		SAFETY	
Acceptable sound level (db)	50	Accessible hot surface:	NA
Speech privacy	essential: desirable: UNNECESSARY	Maximum temperature (deg. C)	NA
Quality which cannot be tolerated	tonal impact	Domestic hot water	NA
		Maximum temperature (deg. C)	NA
		Access limit	radiology staff & patient
		Fire risk	LOW: medium: high
		Other risks	NA

Hospital		Department of Health	
Tertiary, 100-Bed		HEALTH INFRASTRUCTURE SERVICE	
Updated Reference: May 1992		Department: RADIOLOGY	Room Title: WAITING AREA
		Reference Sheet Number: 100B-AN-RDS06C	
TECHNICAL DESIGN DATA:		LAYOUT OF ROOM AND SPACE COMPONENTS:	
DIRECT SERVICES:	DESIGN DATA	<p style="text-align: right;">Scale 1:100 mts.</p>	
Disposal	hospital solid waste type: A		
Hot water	NA		
Cold Water	required at toilet fixture		
Drainage	required at toilet fixture and floor		
Gas:	NA		
Compressed air:	NA		
Steam	NA		
Others			
DIRECT DEMANDS ON FLOOR AND WALL			
Loading	NA		
Spillage	NA		
Foot Traffic:	light: medium: HEAVY		
Wheel traffic	light: MEDIUM: heavy		
Impacts:	NA		
Abrasion	NA	SPACE DEMANDS (Total Minimum Space Required in sq m.) 25.36	
Easy maintenance	ESSENTIAL: desirable: unnecessary	Space Components	Minimum Space Required/Component
Vibration free	ESSENTIAL: desirable: unnecessary	X-ray Room	22.00 sq.m.
Door sets:	wheelchair stretcher, trolley	toilet	3.36 sq.m.
	access	REGULATIONS AND NOTES:	
Windows:	clear, solar control		
Internal glazing	nil		

Hospital: Tertiary, 100-Bed	ROOM DATA SHEET		Department of Health HEALTH INFRASTRUCTURE SERVICE	
Updated Reference: May 1992	Department: RADIOLOGY	Room Title: RADIOLOGISTS' OFFICE	Reference Sheet Number: 100B-AN-RDS07A	
FUNCTIONAL DESIGN REQUIREMENTS:				
<p>This activity space provides facilities needed for the following activities:</p> <ul style="list-style-type: none"> a. Radiologist interprets x-ray film and/or ultrasound images. b. Clerk types results c. Radiologist meets with x-ray technologists, physicians and other hospital staff d. Radiologist receives visitors or patients. e. Radiologist uses toilet <p>People Involved:</p> <ul style="list-style-type: none"> 1 x X-ray Clerk Companions/Watchers <p>Planning Relationship:</p> <ul style="list-style-type: none"> a. Easily accessible to all other rooms within the Radiology Department. 	EQUIPMENT AND ACCESSORY CHECKLIST	QUANTITY	REMARKS	
	Wall mounted negatoscope 4 banks; 14 x 17 sq. in. per bank	1		
	Magnifying lens	1		
	Typewriter	1		
	FURNITURE AND FIXTURE CHECKLIST			
	Desk, 750x1500	1		
Swivel chair	1			
Chair, upright, stacking	7			
Steel filing cabinet, 500x700	1			
Counter with cabinet below	1			
Typewriter table, 400x800	1			
Sofa bed	1			
Table, 800x1200	1			
Lavatory	1			
Water closet	1			
ADDITIONAL EQUIPMENT AND ENGINEERING TERMINALS				
Outlet, telephone	1	grounding type slots		
Outlet, 15A, 2P, 240v, single	1	Tandem slots		

Hospital	ROOM DATA SHEET		Department of Health
Tertiary, 100-Bed			HEALTH INFRASTRUCTURE SERVICE
Updated Reference: May 1992	Department: RADIOLOGY	Room Title: RADIOLOGIST'S OFFICE	Reference Sheet Number: 100B-AN-RDS07B
TECHNICAL DESIGN DATA:			
ENVIRONMENTAL CONDITIONS	DESIGN DATA	ENVIRONMENTAL CONDITIONS	DESIGN DATA
AIR		LIGHTING AND VISUAL	
Outdoor air temperature (deg. C)	ave. local station temp. reading	General illumination (LUX)	500
Room Temperature	25	Night illumination (LUX)	NA
Mechanical ventilation		Task illumination (LUX)	NA
Volume (cu m./hr.-person)	12.75	Colour rendering	ESSENTIAL: desirable: unnecessary
Velocity (m/hr.)	900	Standby light	essential: DESIRABLE : unnecessary
Pressure:		Emergency light	essential: desirable : UNNECESSARY
Exhaust (psi)	NA	Daylight	essential: DESIRABLE: unnecessary
Inlet (psi)	NA	View out	essential: DESIRABLE : unnecessary
% Dust filtration	93%-99% @ 1 micron	Privacy	essential: DESIRABLE: unnecessary
Humidity (%RH)	50	Black out	essential: desirable : UNNECESSARY
Cooling load (TR)	1		
SOUND		SAFETY	
Acceptable sound level (db)	40	Accessible hot surface	NA
Speech privacy	essential: DESIRABLE: unnecessary	Maximum temperature (deg. C)	NA
Quality which cannot be tolerated	tonal impact	Domestic hot water:	at lavatory
		Maximum temperature (deg. C)	70
		Access limit	radiologist
		Fire risk	LOW: medium/high
		Other risks	NA

Hospital	ROOM DATA SHEET		Department of Health																		
Tertiary, 100-Bed			HEALTH INFRASTRUCTURE SERVICE																		
Updated Reference: May 1992	Department: RADIOLOGY	Room Title: RADIOLOGISTS OFFICE	Reference Sheet Number: 100B-AN-RDS07C																		
TECHNICAL DESIGN DATA:		LAYOUT OF ROOM AND SPACE COMPONENTS:																			
<table border="1"> <thead> <tr> <th>DIRECT SERVICES</th> <th>DESIGN DATA</th> </tr> </thead> <tbody> <tr> <td>Disposal</td> <td>hospital solid waste type A, C</td> </tr> <tr> <td>Hot Water</td> <td>required at lavatory</td> </tr> <tr> <td>Cold Water</td> <td>required at toilet</td> </tr> <tr> <td>Drainage</td> <td>required at toilet fixture and flooring</td> </tr> <tr> <td>Gas</td> <td>NA</td> </tr> <tr> <td>Compressed Air</td> <td>NA</td> </tr> <tr> <td>Steam</td> <td>NA</td> </tr> <tr> <td>Others</td> <td></td> </tr> </tbody> </table>		DIRECT SERVICES	DESIGN DATA	Disposal	hospital solid waste type A, C	Hot Water	required at lavatory	Cold Water	required at toilet	Drainage	required at toilet fixture and flooring	Gas	NA	Compressed Air	NA	Steam	NA	Others		<p style="text-align: right;">Scale: 1:100 mts.</p>	
DIRECT SERVICES	DESIGN DATA																				
Disposal	hospital solid waste type A, C																				
Hot Water	required at lavatory																				
Cold Water	required at toilet																				
Drainage	required at toilet fixture and flooring																				
Gas	NA																				
Compressed Air	NA																				
Steam	NA																				
Others																					
DIRECT DEMANDS ON FLOOR AND WALL		Key																			
Loading	NA	1. Counter with cabinet below	6. Sofa bed																		
Spillage	NA	2. Swivel chair	7. Negatoscope																		
Foot traffic	LIGHT medium heavy	3. Steel filing cabinet 500x700	8. Table, 800x1200																		
Wheel traffic	NA	4. Desk, 750x1500	9. Airconditioning unit																		
Impacts	NA	5. Typewriter table, 1400x800	10. Chair, upright, stacking																		
Abrasion	NA																				
Easy maintenance	essential DESIRABLE unnecessary	SPACE DEMANDS (Total Minimum Space Required in sq.m.): 19.95																			
Vibration free	ESSENTIAL desirable unnecessary	Space Components	Minimum Space Required/Component																		
Door set	ordinary access	Office Area	17.85 sq.m.																		
		Toilet	2.10 sq.m.																		
Windows	clear, privacy control	REGULATIONS AND NOTES:																			
Internal glazing	nil																				

Hospital	ROOM DATA SHEET		Department of Health
Tertiary, 100-Bed			HEALTH INFRASTRUCTURE SERVICE
Updated Reference: May 1992	Department: RADIOLOGY	Room Title: STAFF ROOM	Reference Sheet Number: 100B-AN-RDS08B
TECHNICAL DESIGN DATA:			
ENVIRONMENTAL CONDITIONS	DESIGN DATA	ENVIRONMENTAL CONDITIONS	DESIGN DATA
AIR		LIGHTING AND VISUAL	
Outdoor air temperature (deg. C)	ave. local station temp. reading	General illumination (LUX)	250
Room Temperature	25	Night illumination (LUX)	NA
Mechanical ventilation		Task illumination (LUX)	NA
Volume (cu.m./hr./person)	12.75	Colour rendering	essential : desirable : UNNECESSARY
Velocity (m.hr.)	900	Standby light	essential : DESIRABLE : unnecessary
Pressure:		Emergency light	essential : desirable : UNNECESSARY
Exhaust (psi)	NA	Daylight	essential : desirable : UNNECESSARY
Inlet (psi)	NA	View out	essential : desirable : UNNECESSARY
% Dust filtration	93%-99% @ 1 micron	Privacy	ESSENTIAL : desirable : unnecessary
Humidity (%RH)	50	Black out	essential : desirable : UNNECESSARY
Cooling load (TR)	1	Cooling load (TR)	1
SOUND		SAFETY	
Acceptable sound level (db)	50	Accessible hot surface:	NA
Speech privacy	essential : DESIRABLE : unnecessary	Maximum temperature (deg. C)	NA
Quality which cannot be tolerated	tonal impact	Domestic hot water:	at Lavatory
		Maximum temperature (deg. C)	70
		Access limit	radiology staff
		Fire risk	LOW : medium : high
		Other risks	NA

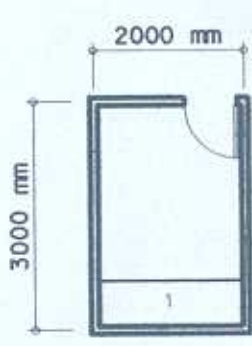
Hospital: Tertiary, 100-Bed	ROOM DATA SHEET		Department of Health HEALTH INFRASTRUCTURE SERVICE
Updated Reference: May 1992	Department: RADIOLOGY	Room Title: STAFF ROOM	Reference Sheet Number: 100B-AN-RDS08A
FUNCTIONAL DESIGN REQUIREMENTS:			
<p>This activity space provides facilities needed for the following activities:</p> <ul style="list-style-type: none"> a. Lounging area for Radiology staff b. Radiology staff store personal belongings c. Radiology staff uses toilet facilities <p>People involved:</p> <ul style="list-style-type: none"> 4 x X-ray Technicians/Technologists 1 x Ultrasonologist 2 x Clerks X-ray Interns Resident Physicians <p>Planning Relationships:</p> <ul style="list-style-type: none"> a. Adjacent to Radiologist's office 	EQUIPMENT AND ACCESSORY CHECKLIST	QUANTITY	REMARKS
	Refrigerator Waste receptacle	1 1	
	FURNITURE AND ENGINEERING TERMINALS	QUANTITY	REMARKS
Chair, upright, stacking Locker, 500x600 Sofa bed Table, 800x1200 Lavatory Water Closet three slots each	4 3 1 1 1 1	three slots each	
ADDITIONAL EQUIPMENT AND ENGINEERING TERMINALS	QUANTITY	REMARKS	
Rail, curtain, window Outlet, 10A, 2P, 240V Smoke detector Outlet, intercom	1 3 1 1	grounding type, parallel slots	

Hospital: Tertiary, 100-Bed	ROOM DATA SHEET		Department of Health HEALTH INFRASTRUCTURE SERVICE
Updated Reference: May 1992	Department: RADIOLOGY	Room Title: STAFF ROOM	Reference Sheet Number: 100B-AN-RDS08C
TECHNICAL DESIGN DATA:		LAYOUT OF ROOM AND SPACE COMPONENTS:	
DIRECT SERVICES	DESIGN DATA	Scale 1:100 mts.	
Disposal	hospital solid waste type : A		
Hot water	required at lavatory		
Cold water	required at toilet fixtures		
Drainage	required at toilet fixtures and floor		
Gas	NA		
Compressed air	NA		
Steam	NA		
Others			
DIRECT DEMANDS ON FLOOR AND WALL			
Loading	NA		
Spillage	NA		
Foot traffic	LIGHT : medium : heavy		
Wheel traffic	NA		
Impacts	NA		
Abrasion	NA		
Easy maintenance	essential/DESIRABLE/unnecessary	SPACE DEMANDS (Total Minimum Space Required in sq.m.) : 15.05	
Vibration free	essential/DESIRABLE/unnecessary	Space Components	Minimum Space Required/Component
Door sets	ordinary access door	Lounging Area	12.25 sq.m
Windows	clear	Toilet	2.80 sq.m
Internal glazing	nil	REGULATIONS AND NOTES:	

Key

- 1. Sofa bed
- 2. Refrigerator
- 3. Locker, 500x600
- 4. Table, 800x1200
- 5. Chair, upright, stacking
- 6. Waste receptacle

Hospital: Tertiary, 100-Bed	ROOM DATA SHEET		Department of Health HEALTH INFRASTRUCTURE SERVICE
Updated Reference: November 1991	Department: SURGERY	Room Title: STORAGE ROOM	Reference Sheet Number: 100B-CL-RDS30B
TECHNICAL DESIGN DATA:			
ENVIRONMENTAL CONDITIONS	DESIGN DATA	ENVIRONMENTAL CONDITIONS	DESIGN DATA
AIR		LIGHTING AND VISUAL	
Outdoor air temperature (deg.C)	ave. local station temp. reading	General illumination (LUX)	250
Room Temperature (deg. C)	atmospheric	Night illumination (LUX)	NA
Mechanical ventilation:		Task illumination (LUX)	NA
Volume (cu m./hr.-person)	NA	Colour rendering	essential : DESIRABLE : unnecessary
Velocity (m./hr.)	NA	Standby light	essential : DESIRABLE : unnecessary
Pressure:		Emergency light	essential : DESIRABLE : unnecessary
Exhaust (psi)	NA	Daylight	essential : desirable : UNNECESSARY
Inlet (psi)	NA	View out	essential : desirable : UNNECESSARY
%Dust filtration	NA	Privacy	essential : desirable : UNNECESSARY
Humidity (%RH)	NA	Black out	essential : desirable : UNNECESSARY
Cooling load (TR)	NA		
SOUND		SAFETY	
Acceptable sound level (db)	60	Accessible hot surface:	NA
Speech privacy	essential desirable UNNECESSARY	Maximum temperature (deg. C)	NA
Quality which cannot be	NA	Domestic hot water:	NA
tolerated		Maximum temperature (deg. C)	NA
		Access limit	maintenance staff
		Fire risk	LOW : medium : high
		Other risks	NA

Hospital: Tertiary, 100-Bed	ROOM DATA SHEET		Department of Health HEALTH INFRASTRUCTURE SERVICE
Updated Reference: November 1991	Department: SURGERY	Room Title: STORAGE ROOM	Reference Sheet Number: 100B-CL-RDS30C
TECHNICAL DESIGN DATA:		LAYOUT OF ROOM AND SPACE COMPONENTS:	
DIRECT SERVICES	DESIGN DATA	<p>Scale 1:100 mts.</p> 	
Disposal	NA		
Hot water	NA		
Cold water	NA		
Drainage	NA		
Gas	NA		
Compressed air	NA		
Steam	NA		
Others			
DIRECT DEMANDS ON FLOOR AND WALL			
Loading	light : MEDIUM : heavy		
Spillage	NA		
Foot traffic	LIGHT : medium : heavy		
Wheel traffic	NA		
Impacts	NA		
Abrasion	NA		
Easy maintenance	ESSENTIAL: desirable: unnecessary		
Vibration free	essential: DESIRABLE: unnecessary		
Door sets	ordinary access door		
SPACE DEMANDS (Total Minimum Space Required in sq.m.): 6.00			
		Space Components	Minimum Space Required/Component
Windows	clear, solar control	REGULATIONS AND NOTES:	
Internal glazing	nil		

Hospital: Tertiary, 100-Bed	ROOM DATA SHEET		Department of Health HEALTH INFRASTRUCTURE SERVICE	
Updated Reference: May 1992	Department: RADIOLOGY	Room Title: CLERICAL ROOM	Reference Sheet Number: 100B-AN-RDS09A	
FUNCTIONAL DESIGN REQUIREMENTS:				
<p>This activity space provides facilities needed for the following activities:</p> <ul style="list-style-type: none"> a. Clerk receives request of patients to be x-rayed. b. X-ray Technician/Technologist schedules patient for routine and special radiographic procedures. c. Clerk types results, files and retrieves records. d. Clerk issues results of radiographic procedures done. <p>People involved:</p> <ul style="list-style-type: none"> X-ray Technicians/Technologists 2 x Clerks X-ray Interns if there are any. <p>Planning Relationships:</p> <ul style="list-style-type: none"> a. Adjacent to Film Storage. b. Close to Radiologist's Office. 	EQUIPMENT AND ACCESSORY CHECKLIST	QUANTITY	REMARKS	
	Typewriter Waste receptacle	1 1		
	FURNITURE AND FIXTURE CHECKLIST	QUANTITY	REMARKS	
	Chair, upright, stacking Film sorting counter Desk, 750x1200 Steel filing cabinet 500x700 Typewriter table 400x800 Open shelving, wall mounted Swivel Chair	1 1 2 1 1 2		
	ADDITIONAL EQUIPMENT AND ENGINEERING TERMINALS	QUANTITY	REMARKS	
	Rail, curtain, window Outlet, 10A, 2P, 240V Smoke detector Outlet, intercom Outlet, telephone	1 4 1 1 1	grounding type, parallel slots	

Hospital Tertiary, 100-Bed	ROOM DATA SHEET		Department of Health HEALTH INFRASTRUCTURE SERVICE
Updated Reference: May 1992	Department: RADIOLOGY	Room Title: CLERICAL ROOM	Reference Sheet Number: 100B-AN-RDS09B
TECHNICAL DESIGN DATA:			
ENVIRONMENTAL CONDITIONS	DESIGN DATA	ENVIRONMENTAL CONDITIONS	DESIGN DATA
AIR		LIGHTING AND VISUAL	
Outdoor air temperature (deg. C)	ave. local station temp. reading	General illumination (LUX)	500
Room Temperature	25	Night illumination (LUX)	NA
Mechanical ventilation		Task illumination (LUX)	NA
Volume (cu.m./hr./person)	12.75	Colour rendering	essential: DESIRABLE: unnecessary
Velocity (m.hr.)	900	Standby light	essential: DESIRABLE : unnecessary
Pressure		Emergency light	essential: DESIRABLE : unnecessary
Exhaust (psi)	NA	Daylight	essential: desirable UNNECESSARY
Inlet (psi)	NA	View out	essential: desirable UNNECESSARY
% Dust filtration	93%-99% @ 1 micron	Privacy	essential: DESIRABLE : unnecessary
Humidity (%RH)	50	Black out	essential: desirable : UNNECESSARY
Cooling load (TR)	1		
SOUND		SAFETY	
Acceptable sound level (db)	50	Accessible hot surface	NA
Speech privacy	essential: DESIRABLE: unnecessary	Maximum temperature (deg. C)	NA
Quality which cannot be tolerated	tonal impact	Domestic hot water	NA
		Maximum temperature (deg. C)	NA
		Access limit	radiology staff
		Fire risk	LOW medium high
		Other risks	NA

Hospital: Tertiary, 100-Bed	ROOM DATA SHEET		Department of Health HEALTH INFRASTRUCTURE SERVICE
Updated Reference: May 1992	Department: RADIOLOGY	Room Title: CLERICAL ROOM	Reference Sheet Number: 100B-AN-RDS09C
TECHNICAL DESIGN DATA:		LAYOUT OF ROOM AND SPACE COMPONENTS:	
DIRECT SERVICES	DESIGN DATA	<p>Scale 1:100 mts.</p>	
Disposal	hospital solid waste type : A		
Hot water	NA		
Cold water	NA		
Drainage	NA		
Gas	NA		
Compressed air	NA		
Steam	NA		
Others			
DIRECT DEMANDS ON FLOOR AND WALL			
Loading	NA	SPACE DEMANDS (Total Minimum Space Required in sq.m.) : 12.25	
Spillage	NA	Space Components	Minimum Space Required/Component
Foot traffic	light MEDIUM heavy		
Wheel traffic	NA		
Impacts	NA		
Abrasion	NA		
Easy maintenance	essential : DESIRABLE : unnecessary	REGULATIONS AND NOTES:	
Vibration free	essential : DESIRABLE : unnecessary		
Door sets	ordinary access door		
Windows	clear		
Internal glazing	nil		

Hospital: Tertiary, 100-Bed	ROOM DATA SHEET		Department of Health HEALTH INFRASTRUCTURE SERVICE
Updated Reference: May 1992	Department: RADIOLOGY	Room Title: FILM FILE STORAGE	Reference Sheet Number: 100B-AN-RDS10B
TECHNICAL DESIGN DATA:			
ENVIRONMENTAL CONDITIONS	DESIGN DATA	ENVIRONMENTAL CONDITIONS	DESIGN DATA
AIR		LIGHTING AND VISUAL	
Outdoor air temperature (deg.C)	ave. local station temp. reading	General illumination (LUX)	150
Room Temperature (deg. C)	ambient	Night illumination (LUX)	NA
Mechanical ventilation:		Task illumination (LUX)	NA
Volume (cu.m./hr.-person)	NA	Colour rendering	essential : DESIRABLE : unnecessary
Velocity (m./hr.)	NA	Standby light	essential : desirable : UNNECESSARY
Pressure:		Emergency light	essential : desirable : UNNECESSARY
Exhaust (psi)	NA	Daylight	essential : desirable : UNNECESSARY
Inlet (psi)	NA	View out	essential : desirable : UNNECESSARY
%Dust filtration	NA	Privacy	essential : desirable : UNNECESSARY
Humidity (%RH)	NA	Black out	essential : desirable : UNNECESSARY
Cooling load (TR)	NA		
SOUND			
Acceptable sound level (db)	60	SAFETY	
Speech privacy	essential: desirable: UNNECESSARY	Accessible hot surface:	NA
Quality which cannot be tolerated	NA	Maximum temperature (deg. C)	NA
		Domestic hot water:	NA
		Maximum temperature (deg. C)	NA
		Access limit	radiology staff
		Fire risk	LOW : medium : high
		Other risks	NA

Hospital: Tertiary, 100-Bed	ROOM DATA SHEET		Department of Health HEALTH INFRASTRUCTURE SERVICE
Updated Reference: May 1992	Department: RADIOLOGY	Room Title: FILM FILE STORAGE	Reference Sheet Number: 100B-AN-RDS10C
TECHNICAL DESIGN DATA:		LAYOUT OF ROOM AND SPACE COMPONENTS:	
DIRECT SERVICES	DESIGN DATA	Scale 1:100 mts.	
Disposal	hospital solid waste type : A		
Hot water	NA		
Cold water	NA		
Drainage	NA		
Gas	NA		
Compressed air	NA		
Steam	NA		
Others			
DIRECT DEMANDS ON FLOOR AND WALL			
Loading	light : MEDIUM : heavy		
Spillage	NA		
Foot traffic	LIGHT medium heavy		
Wheel traffic	NA		
Impacts	NA		
Abrasion	NA		
Easy maintenance	ESSENTIAL: desirable unnecessary	SPACE DEMANDS (Total Minimum Space Required in sq.m.) : 8.75	
Vibration free	essential: desirable: UNNECESSARY	Space Components	Minimum Space Required/Component
Door sets	ordinary access door		
Windows	clear, solar control	REGULATIONS AND NOTES:	
Internal glazing	nil		

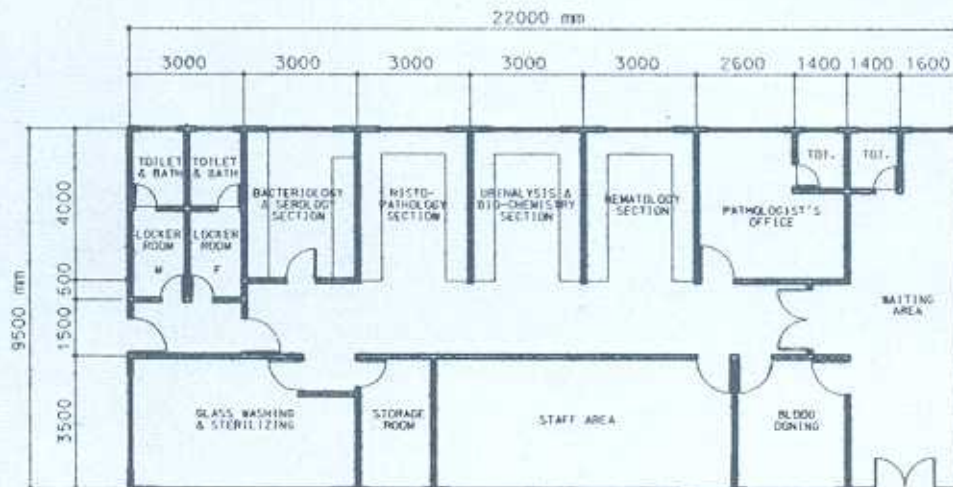
Key

1. Open shelving, 5 shelves high
2. Open shelving, 7 shelves high
3. Aluminum or wooden movable ladder

Hospital: Tertiary, 100-Bed	DEPARTMENT DATA SHEET	Department of Health HEALTH INFRASTRUCTURE SERVICE
Updated Reference: November 1991	Department: LABORATORY	Reference Sheet Number: 100B-AN-DDS02

LAYOUT PER DEPARTMENT SHOWING ROOMS AND SPACE COMPONENTS:

Scale 1:200 mts



Hospital: Tertiary, 100-Bed	ROOM DATA SHEET		Department of Health HEALTH INFRASTRUCTURE SERVICE	
Updated Reference: May 1992	Department: LABORATORY	Room Title: BACTERIOLOGY AND SEROLOGY SECTION	Reference Sheet Number: 100B-AN-RDS11A	
FUNCTIONAL DESIGN REQUIREMENTS:				
<p>This activity space provides facilities needed for the following activities:</p> <ul style="list-style-type: none"> a. Preparation of culture media. b. Staining of slides c. Preparation of specimens from suspect cases: tuberculosis, fungi and viral diseases d. Clinical handwashing. <p>People Involved:</p> <ul style="list-style-type: none"> 1 x Medical technologist 1 x Medical laboratory technician. <p>Planning Relationships:</p> <ul style="list-style-type: none"> a. Close to Histopathology Section. b. Close to Glass Washing and Sterilizing Room. 	EQUIPMENT AND ACCESSORY CHECKLIST	QUANTITY	REMARKS	
	Staining sink Refrigerator, 8 cu.ft. Exhaust air grill Sink with electric grinder Incubator Autoclave	1 1 1 1 1 1		
	FURNITURE AND FIXTURE CHECKLIST	QUANTITY	REMARKS	
	Steel filing cabinet, 500x700 Stool Non-corrosive metal pegboards above drain boards Counter, 750mm high, open below Counter, 750mm high, Cabinets below w/adjustable shelves Counter, 750 mm high, drawers and adjustable shelves below Wall cabinets	1 2 1		
	ADDITIONAL EQUIPMENT AND ENGINEERING TERMINALS	QUANTITY	REMARKS	
	Rail, curtain, window Outlet, Intercom Outlet, 10A, 2P, 240V, duplex Outlet, 15A, 2P, 240V, Single	1 1 5 1	grounding type parallel slots grounding type tandem slots	

Hospital	ROOM DATA SHEET		Department of Health
Tertiary, 100-Bed			HEALTH INFRASTRUCTURE SERVICE
Updated Reference: May 1992	Department: LABORATORY	Room Title: BACTERIOLOGY AND SEROLOGY SECTION	Reference Sheet Number: 100B-AN-RDS11B
TECHNICAL DESIGN DATA:			
ENVIRONMENTAL CONDITIONS	DESIGN DATA	ENVIRONMENTAL CONDITIONS	DESIGN DATA
AIR		LIGHTING AND VISUAL	
Outdoor air temperature (deg. C)	ave. local station temp. reading	General illumination (LUX)	500
Room Temperature	25	Night illumination (LUX)	NA
Mechanical ventilation		Task illumination (LUX)	1,000
Volume (cu.m./hr.-person)	12.75	Colour rendering	ESSENTIAL: desirable: unnecessary
Velocity (m/hr.)	900	Standby light	essential: DESIRABLE: unnecessary
Pressure:		Emergency light	essential: DESIRABLE: unnecessary
Exhaust (psi)	6 mm.Hg.	Daylight	essential: desirable: UNNECESSARY
Inlet (psi)	6 mm.Hg.	View out	essential: desirable: UNNECESSARY
% Dust filtration	93% - 99% @ 1 micron	Privacy	ESSENTIAL: desirable: unnecessary
Humidity (%RH)	50	Black out	essential: desirable: UNNECESSARY
Cooling load (TR)	1.		
SOUND		SAFETY	
Acceptable sound level (db)	50	Accessible hot surface:	autoclave
Speech privacy	essential: DESIRABLE: unnecessary	Maximum temperature (deg. C)	100
Quality which cannot be	tonal impact	Domestic hot water:	at sink
tolerated		Maximum temperature (deg. C)	70
		Access limit	laboratory staff
		Fire risk	low MEDIUM high
		Other risks	exposure to hazardous elements

Hospital: Tertiary, 100-Bed	ROOM DATA SHEET		Department of Health HEALTH INFRASTRUCTURE SERVICE
Updated Reference: May 1992	Department: RADIOLOGY	Room Title: ULTRASOUND ROOM	Reference Sheet Number: 100B-AN-RDS05C
TECHNICAL DESIGN DATA:		LAYOUT OF ROOM AND SPACE COMPONENTS:	
DIRECT SERVICES	DESIGN DATA	Scale 1:100 mts.	
Disposal	hospital solid waste type : A		
Hot water	required at lavatory		
Cold water	required at toilet fixtures		
Drainage	required at toilet fixtures and floor		
Gas	NA		
Compressed air	NA		
Steam	NA		
Others			
DIRECT DEMANDS ON FLOOR AND WALL			
Loading	NA		
Spillage	NA		
Foot traffic	light : MEDIUM : heavy		
Wheel traffic	LIGHT : medium : heavy		
Impacts	NA		
Abrasion	NA		
Easy maintenance	ESSENTIAL : desirable : unnecessary		
Vibration free	ESSENTIAL : desirable : unnecessary		
Door sets	wheelchair access		
Windows	clear, solar control, privacy control		
Internal glazing	nil		
		Key 1. Ultrasound unit 2. Image receptor 3. Automatic voltage regulator 4. Swivel chair 5. Examining table 6. Bedside table 7. Footstool 8. Desk, 750 x 1200 9. Adjustable chair 10. Steel filing cabinet, 500 x 700 11. Chair, upright, stacking 12. Airconditioning unit 13. Waste receptacle	
		SPACE DEMANDS (Total Minimum Space Required in sq.m.) : 14.64	
		Space Components	Minimum Space Required/Component
		Ultrasound Room	12.40 sq. m.
		Toilet	2.24 sq. m.
		REGULATIONS AND NOTES	

Hospital: Tertiary, 100-Bed	ROOM DATA SHEET		Department of Health HEALTH INFRASTRUCTURE SERVICE						
Updated Reference: May 1992	Department: LABORATORY	Room Title: BACTERIOLOGY AND SEROLOGY SECTION	Reference Sheet Number: 100B-AN-RDS11C						
TECHNICAL DESIGN DATA:		LAYOUT OF ROOM AND SPACE COMPONENTS:							
DIRECT SERVICES	DESIGN DATA	<p style="text-align: right;">Scale 1:100 mts.</p>							
Disposal	hospital solid waste type : A,D,G,H								
Hot water	required at sink								
Cold water	required at sink								
Drainage	required at sink								
Gas	NA								
Compressed air	NA								
Steam	NA								
Others									
DIRECT DEMANDS ON FLOOR AND WALL									
Loading	LIGHT : medium : heavy								
Spillage	slight : OCCASIONAL : frequent								
Foot traffic	LIGHT : medium : heavy								
Wheel traffic	NA								
Impacts	NA								
Abrasion	NA								
Easy maintenance	ESSENTIAL : desirable : unnecessary								
Vibration free	ESSENTIAL : desirable : unnecessary								
Door sets	ordinary access door								
Windows	clear, solar control	SPACE DEMANDS (Total Minimum Space Required in sq.m.) : 18.00 <table border="1" style="width: 100%;"> <thead> <tr> <th>Space Component</th> <th>Minimum Space Required/Component</th> </tr> </thead> <tbody> <tr> <td>Bacteriology and Serology</td> <td>12.00 sq.m.</td> </tr> <tr> <td>Circulation</td> <td>6.00 sq.m.</td> </tr> </tbody> </table>		Space Component	Minimum Space Required/Component	Bacteriology and Serology	12.00 sq.m.	Circulation	6.00 sq.m.
Space Component	Minimum Space Required/Component								
Bacteriology and Serology	12.00 sq.m.								
Circulation	6.00 sq.m.								
Internal glazing	clear	REGULATIONS AND NOTES:							

Hospital: Tertiary, 100-Bed	ROOM DATA SHEET		Department of Health HEALTH INFRASTRUCTURE SERVICE	
Updated Reference: May 1992	Department: LABORATORY	Room Title: HISTOPATHOLOGY SECTION	Reference Sheet Number: 100B-AN-RDS12A	
FUNCTIONAL DESIGN REQUIREMENTS:				
<p>This activity space provides facilities needed for the following activities:</p> <ul style="list-style-type: none"> a. Examination of surgical and autopsy specimens. b. Processing and staining of tissues. c. Clinical handwashing. <p>People Involved:</p> <ul style="list-style-type: none"> 1 x Medical Technologist 1 x Medical Laboratory Technician <p>Planning Relationships:</p> <ul style="list-style-type: none"> a. Close to Bacteriology/Serology Section. b. Close to Urinalysis/Biochemistry Section. 	EQUIPMENT AND ACCESSORY CHECKLIST	QUANTITY	REMARKS	
	Analytical balance Utility sink Exhaust hood Exhaust air grills Carbon dioxide cylinder Gas cylinder Centrifuge	1 2 1 1 1 1 1		
	FURNITURE AND FIXTURE CHECKLIST	QUANTITY	REMARKS	
	Counter, 750mm high, open below Counter, 750mm high, cabinets below w/adjustable shelves Table for instrument Stool Non-corrosive metal pegboards Non-corrosive metal work surface Wall cabinet Counter, 750mm high, drawers and adjustable shelves below	1 2 1		
	ADDITIONAL EQUIPMENT AND ENGINEERING TERMINALS	QUANTITY	REMARKS	
	Rail, curtain, window Outlet, 10A, 2P, 240V, duplex Outlet, 10A, 2P, 240V, single Smoke Detector	1 4 1	grounding type, parallel slots grounding type, tandem slots along corridor	

Hospital Tertiary, 100-Bed	ROOM DATA SHEET		Department of Health HEALTH INFRASTRUCTURE SERVICE
Updated Reference: May 1992	Department: LABORATORY	Room Title: HISTOPATHOLOGY SECTION	Reference Sheet Number: 100B-AN-RDS12B
TECHNICAL DESIGN DATA:			
ENVIRONMENTAL CONDITIONS	DESIGN DATA	ENVIRONMENTAL CONDITIONS	DESIGN DATA
AIR		LIGHTING AND VISUAL	
Outdoor air temperature (deg. C)	ave. local station temp. reading	General illumination (LUX)	500
Room Temperature	25	Night illumination (LUX)	NA
Mechanical ventilation		Task illumination (LUX)	1000
Volume (cu. m./hr.-person)	25.75	Colour rendering	ESSENTIAL desirable: unnecessary
Velocity (m. hr.)	900	Standby light	essential: DESIRABLE : unnecessary
Pressure:		Emergency light	essential: DESIRABLE : unnecessary
Exhaust (psi)	6 mm. Hg.	Daylight	essential: desirable : UNNECESSARY
Inlet (psi)	6 mm. Hg.	View out	essential: desirable : UNNECESSARY
% Dust filtration	93%-99% @ 1 micron	Privacy	essential: DESIRABLE : unnecessary
Humidity (%RH)	50	Black out	essential: desirable : UNNECESSARY
Cooling load (TR)	1		
SOUND		SAFETY	
Acceptable sound level (db)	50	Accessible hot surface:	NA
Speech privacy	essential: DESIRABLE : unnecessary	Maximum temperature (deg. C)	NA
Quality which cannot be tolerated	tonal impact	Domestic hot water:	at sink
		Maximum temperature (deg. C)	70
		Access limit	laboratory : staff
		Fire risk	low : MEDIUM : high
		Other risks:	NA

Hospital: Tertiary, 100-Bed	ROOM DATA SHEET		Department of Health HEALTH INFRASTRUCTURE SERVICE
Updated Reference: May 1992	Department: LABORATORY	Room Title: HISTOPATHOLOGY SECTION	Reference Sheet Number: 100B-AN-RDS12C
TECHNICAL DESIGN DATA:		LAYOUT OF ROOM AND SPACE COMPONENTS:	
DIRECT SERVICES	DESIGN DATA	Scale 1:100 mts.	
Disposal	hospital solid waste type: A,D,G,H		
Hot water	request at sink		
Cold water	request at sink		
Drainage	request at sink		
Gas	NA		
Compressed air	NA		
Steam	NA		
Others			
DIRECT DEMANDS ON FLOOR AND WALL			
Loading	LIGHT : medium : heavy		
Spillage	slight : OCCASIONAL : frequent		
Foot traffic	LIGHT : medium : heavy		
Wheel traffic	NA		
Impacts	NA		
Abrasion	NA		
Easy maintenance	ESSENTIAL: desirable:unnecessary		
Vibration free	ESSENTIAL: desirable: unnecessary		
Door sets	nil, open to circulation	SPACE DEMANDS (Total Minimum Space Required in sq. m.): 18.00	
		Space Components	Minimum Space Required/Component
Windows	clear, solar control	REGULATIONS AND NOTES:	
Internal glazing	nil		

Key

- | | |
|---|------------------------------------|
| 1 Counter, 750 mm high, open below | 8 Non-corrosive metal work surface |
| 2 Analytical balance | 9 Exhaust hood |
| 3 Counter, 750 mm high, cabinets below w/adjustable shelves | 10 Exhaust air grilles near floor |
| 4 Utility sink | 11 Wall cabinet |
| 5 Table for instrument | 12 Carbon dioxide cylinder |
| 6 Stool | 13 Counter, 750mm high drawer |
| 7 Non-corrosive metal pegboards | 14 Centrifuge |

Hospital: Tertiary, 100-Bed	ROOM DATA SHEET		Department of Health HEALTH INFRASTRUCTURE SERVICE
Updated Reference: May 1992	Department LABORATORY	Room Title: URINALYSIS AND BIOCHEMISTRY SECTION	Reference Sheet Number: 100B-AN-RDS13A

FUNCTIONAL DESIGN REQUIREMENTS:

<p>This activity space provides facilities needed for the following activities:</p> <ul style="list-style-type: none"> a. Microscopic & chemical examinations. b. Clinical analysis, titrations & other procedures. c. Clinical handwashing. 	EQUIPMENT AND ACCESSORY CHECKLIST	QUANTITY	REMARKS
	Cup sink	1	
	Utility sink	1	
	Refrigerator, 8 cu.ft.	1	
	Exhaust air grills	1	
	Centrifuge	1	
	FURNITURE AND FIXTURE CHECKLIST	QUANTITY	REMARKS
<p>People Involved:</p> <ul style="list-style-type: none"> 1 x Medical Technologist 1 x Medical Laboratory Technician 	Desk, 750 x 1200	1	
	Swivel chair	1	
	Counter, 900mm high, open below		
	Counter, 900mm high, cabinets below w/adjustable shelves		
	Stool	2	
	Non-corrosive metal pegboards above drainboard	1	
	Table for Harvard strip balance	1	
	Counter, 900mm high, drawers and adjustable shelves below		
Wall cabinet			
	ADDITIONAL EQUIPMENT AND ENGINEERING TERMINALS	QUANTITY	REMARKS
<p>Planning Relationships:</p> <ul style="list-style-type: none"> a. Close to Histopathology Section. b. Close to Hematology Section. 	Rail, curtain, window	1	
	Outlet, 10A, 2P, 240V, duplex	5	grounding type, parallel slots
	Outlet, 15A, 2P, 240V, single	1	grounding type, tandem slots

Hospital	ROOM DATA SHEET		Department of Health
Tertiary, 100-Bed			HEALTH INFRASTRUCTURE SERVICE
Updated Reference: May 1992	Department: LABORATORY	Room Title: URINALYSIS AND BIOCHEMISTRY SECTION	Reference Sheet Number: 100B-AN-RDS13B
TECHNICAL DESIGN DATA:			
ENVIRONMENTAL CONDITIONS	DESIGN DATA	ENVIRONMENTAL CONDITIONS	DESIGN DATA
AIR		LIGHTING AND VISUAL	
Outdoor air temperature (deg. C)	ave. local station temp. reading	General illumination (LUX)	500
Room Temperature	25	Night illumination (LUX)	NA
Mechanical ventilation		Task illumination (LUX)	1000
Volume (cu.m./hr.-person)	12.75	Colour rendering	ESSENTIAL: desirable: unnecessary
Velocity (m.hr.)	900	Standby light	essential: DESIRABLE: unnecessary
Pressure:		Emergency light	essential: DESIRABLE: unnecessary
Exhaust (psi)	6 mm. Hg.	Daylight	essential: desirable: UNNECESSARY
Inlet (psi)	6 mm. Hg.	View out	essential: desirable: UNNECESSARY
% Dust filtration	93%-99% @ 1 micron	Privacy	essential: DESIRABLE: unnecessary
Humidity (%RH)	50	Black out	essential: desirable: UNNECESSARY
Cooling load (TR)	1		
SOUND		SAFETY	
Acceptable sound level (db)	50	Accessible hot surface:	NA
Speech privacy	essential: DESIRABLE: unnecessary	Maximum temperature (deg. C)	NA
Quality which cannot be	tonal impact	Domestic hot water:	at sink
tolerated		Maximum temperature (deg. C)	70
		Access limit	laboratory staff
		Fire risk	low: MEDIUM: high
		Other risks	NA

Hospital: Tertiary, 100-Bed	ROOM DATA SHEET		Department of Health HEALTH INFRASTRUCTURE SERVICE
Updated Reference: May 1992	Department: LABORATORY	Room Title: URINALYSIS AND BIOCHEMISTRY SECTION	Reference Sheet Number: 100B-AN-RDS13C
TECHNICAL DESIGN DATA:		LAYOUT OF ROOM AND SPACE COMPONENTS:	
DIRECT SERVICES	DESIGN DATA	<p>Scale 1:100 mts.</p>	
Disposal	hospital solid waste type: AD,G,H		
Hot water	required at sink		
Cold water	required at sink		
Drainage	required at sink		
Gas	NA		
Compressed air	NA		
Steam	NA		
Others			
DIRECT DEMANDS ON FLOOR AND WALL			
Loading	LIGHT : medium : heavy		
Spillage	slight OCCASIONAL : frequent		
Foot traffic	LIGHT : medium : heavy		
Wheel traffic	NA		
Impacts	NA		
Abrasion	NA		
Easy maintenance	ESSENTIAL, desirable unnecessary		
Vibration free	ESSENTIAL, desirable unnecessary		
Door sets	nil, open to circulation	SPACE DEMANDS (Total Minimum Space Required in sq.m.): 18.00	
		Space Components	Minimum Space Required/Component
Windows	clear, solar control	REGULATIONS AND NOTES:	
internal glazing	nil		

Hospital: Tertiary, 100-Bed	ROOM DATA SHEET		Department of Health HEALTH INFRASTRUCTURE SERVICE
Updated Reference: May 1992	Department: LABORATORY	Room Title: HEMATOLOGY SECTION	Reference Sheet Number: 100B-AN-RDS14A

FUNCTIONAL DESIGN REQUIREMENTS:

<p>This activity space provides facilities needed for the following activities:</p> <ul style="list-style-type: none"> a. Hemoglobin test, sedimentation rates, staining & washing of pipettes. b. Clinical handwashing. <p>People Involved:</p> <ul style="list-style-type: none"> 1 x Medical Technologist 1 x Medical Laboratory Technician <p>Planning Relationships:</p> <ul style="list-style-type: none"> a. Close to Urinalysis / Biochemistry Section. b. Close to Pathologist's Office. 	EQUIPMENT AND ACCESSORY CHECKLIST	QUANTITY	REMARKS	
	Staining sink Cup sink Refrigerator, 8-cu.ft. Micro Hematocrit centrifuge Exhaust air grill	1 1 1 1 1		
	FURNITURE AND FIXTURE CHECKLIST	QUANTITY	REMARKS	
	Counter, 900 mm high, open below Counter, 900 mm high, cabinets below w/adjustable shelves Stool Non-corrosive metal pegboards above drainboard Counter, 900 mm high, drawers and adjustable shelves below	4 1		
	ADDITIONAL EQUIPMENT AND ENGINEERING TERMINALS	QUANTITY	REMARKS	
	Rail, curtain, window Outlet, 10A, 2P, 240V, duplex Outlet, 15A, 2P, 240V, single Smoke detector	1 5 1 1	grounding type, parallel slots grounding type, tandem slots along corridor	

Hospital Tertiary, 100-Bed	ROOM DATA SHEET		Department of Health HEALTH INFRASTRUCTURE SERVICE
Updated Reference: May 1992	Department: LABORATORY	Room Title: HEMATHOLOGY SECTION	Reference Sheet Number: 100B-AN-RDS148
TECHNICAL DESIGN DATA:			
ENVIRONMENTAL CONDITIONS	DESIGN DATA	ENVIRONMENTAL CONDITIONS	DESIGN DATA
AIR		LIGHTING AND VISUAL	
Outdoor air temperature (deg. C)	ave. local station temp. reading	General illumination (LUX)	500
Room Temperature	25	Night illumination (LUX)	NA
Mechanical ventilation		Task illumination (LUX)	1000
Volume (cu.m./hr.-person)	12.75	Colour rendering	essential: DESIRABLE: unnecessary
Velocity (m.hr.)	900	Standby light	essential: DESIRABLE: unnecessary
Pressure		Emergency light	essential: DESIRABLE: unnecessary
Exhaust (psi)	6 mm. Hg.	Daylight	essential: DESIRABLE: unnecessary
Inlet (psi)	6 mm. Hg.	View out	essential: desirable: UNNECESSARY
% Dust filtration	93%-99% @ 1 micron	Privacy	ESSENTIAL: desirable: unnecessary
Humidity (%RH)	50	Black out	ESSENTIAL: desirable: unnecessary
Cooling load (TR)	1		
SOUND		SAFETY	
Acceptable sound level (db)	50	Accessible hot surface	NA
Speech privacy	essential: DESIRABLE: unnecessary	Maximum temperature (deg. C)	NA
Quality which cannot be tolerated	tonal impact	Domestic hot water	at sink
		Maximum temperature (deg. C)	70
		Access limit	laboratory staff
		Fire risk	low: MEDIUM: high
		Other risks	NA